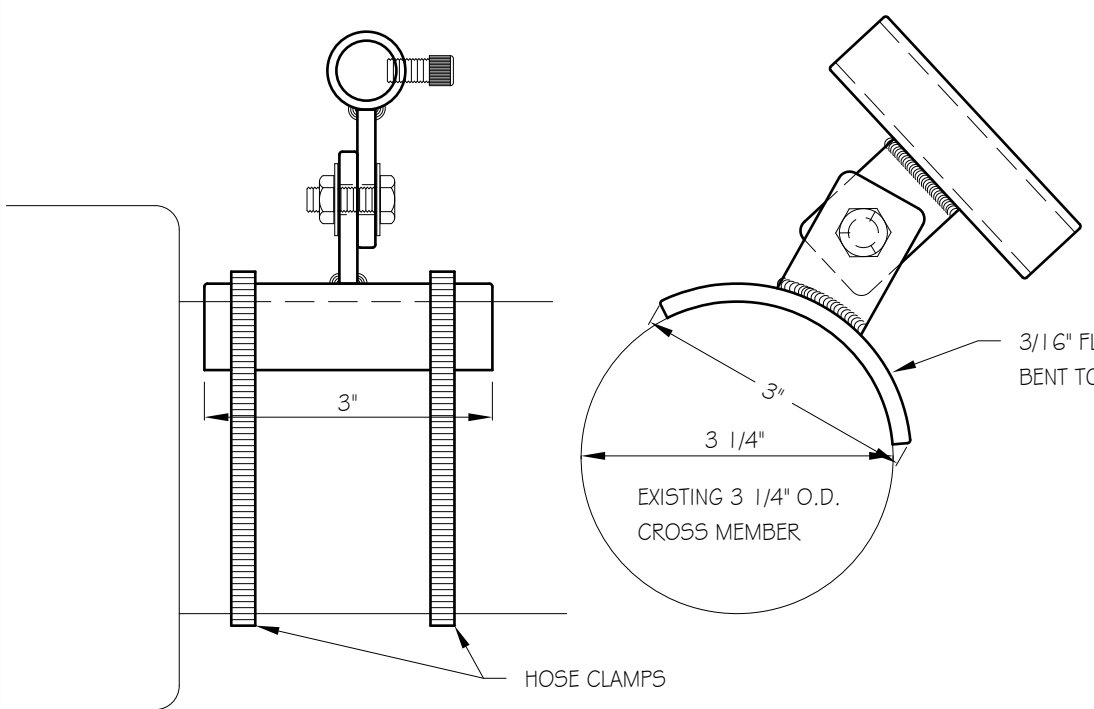
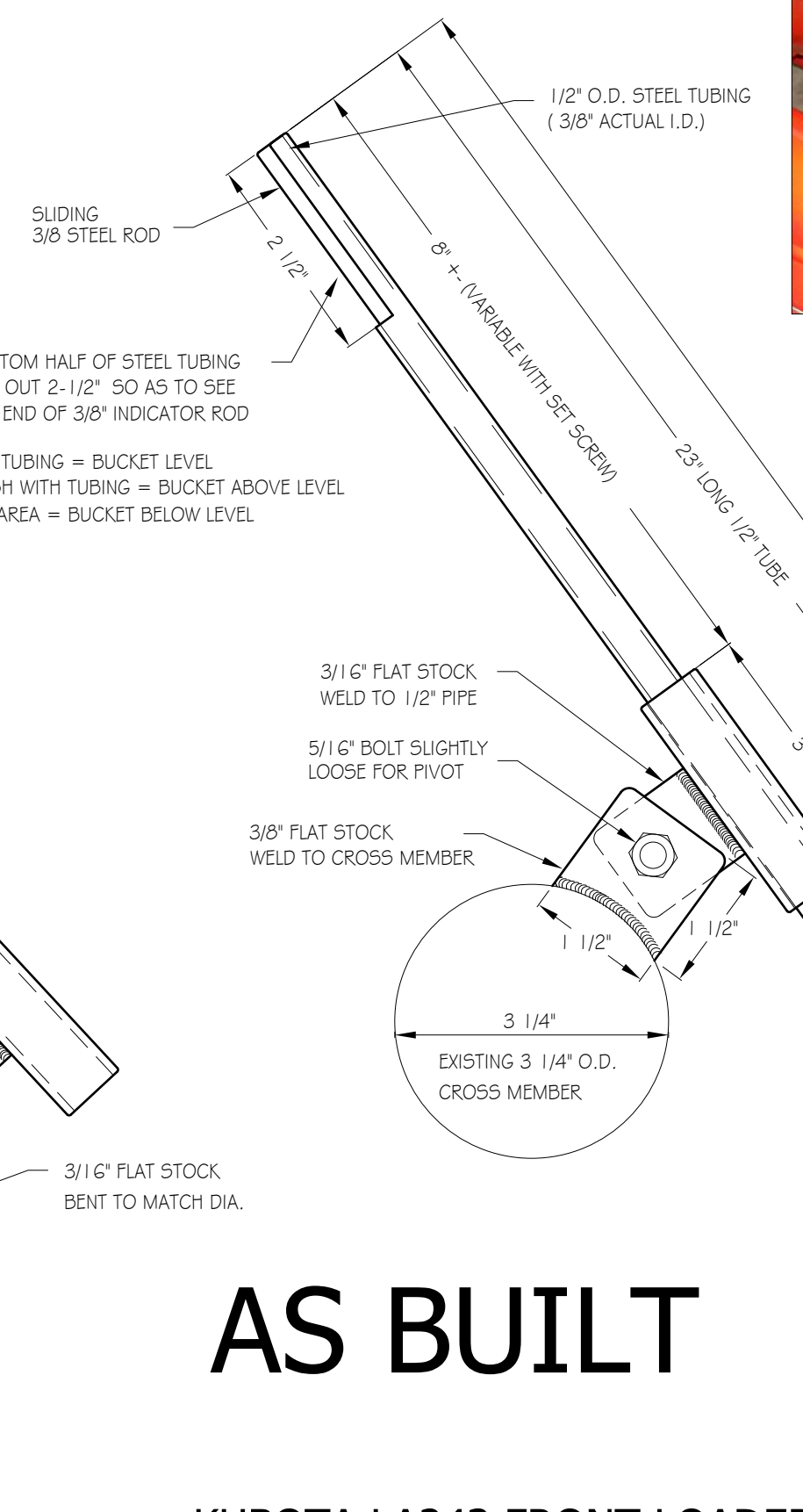


WELD TO CROSS MEMBER OPTION



HOSE CLAMP TO CROSS MEMBER OPTION
(I INITIALLY INSTALLED THIS CLAMP VERSION FOR TRIAL AND TESTING
PRIOR TO WELDING BRACKET DIRECTLY TO CROSS MEMBER)



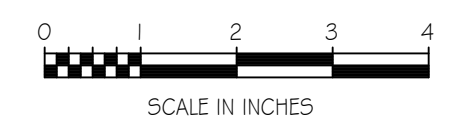
AS BUILT

KUBOTA LA243 FRONT LOADER BUCKET LEVEL INDICATOR



DESIGN FEATURES:
SMALL AND COMPACT DESIGN MATCHES PROPORTIONALLY TO THE REST OF TRACTOR.
SHORT ROD LENGTH PLACES INDICATOR IN FRONT OF HEADLIGHTS FOR NIGHT TIME WORK.
INDICATOR WINDOW ALLOWS FOR FINE TUNING OF BUCKET ANGLE.
SET SCREW ALLOWS FOR ADJUSTING INDICATOR FOR USE WITH OTHER ATTACHMENTS.

(I INITIALLY ATTACHED THE ROD TO THE
EXISTING LEVEL BAR BUT THE ANGLE WAS NOT
GOOD AND THE ROD MOVED TOO QUICKLY)



DESIGNED BY: S.K. Janawicz
JANUARY 2009