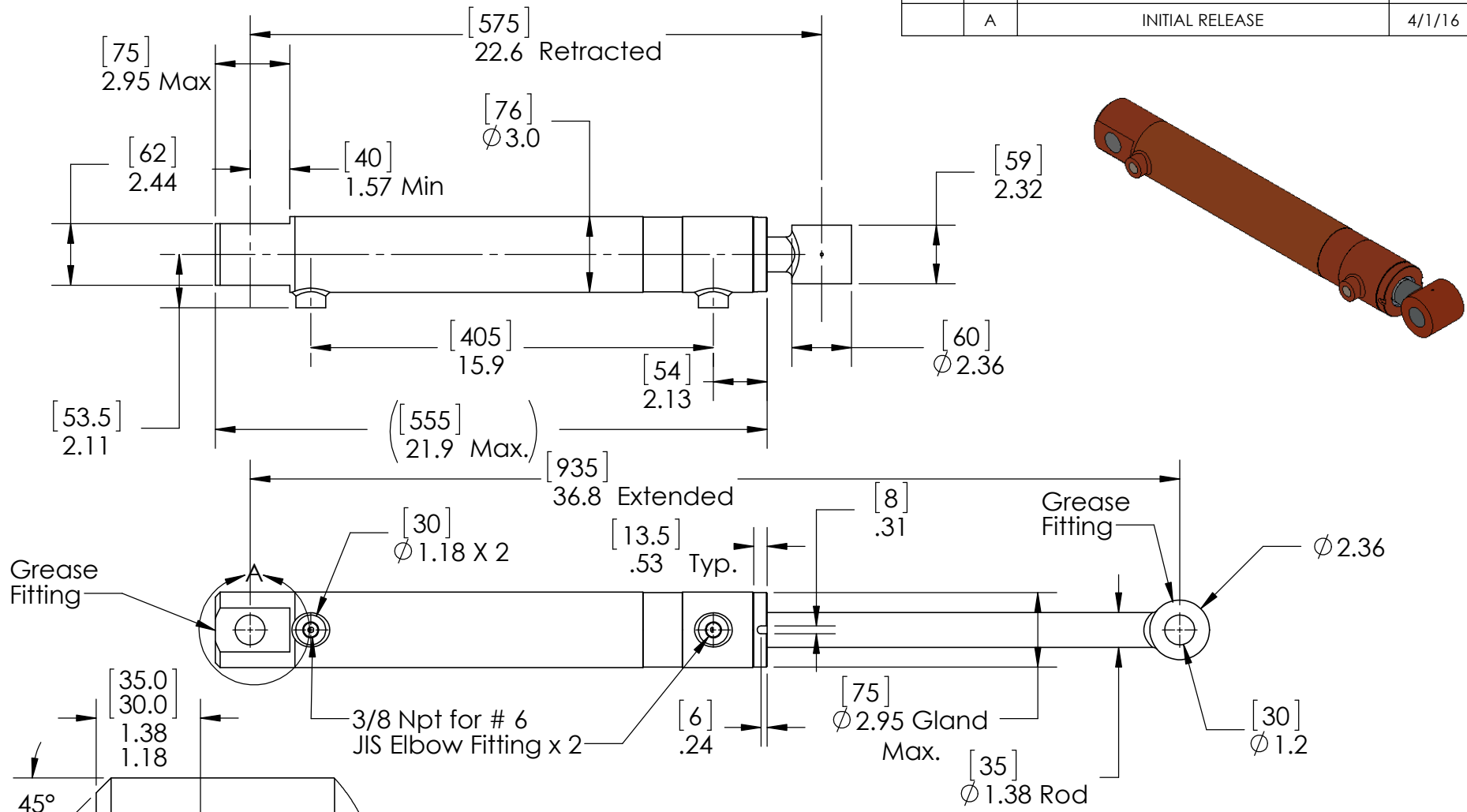


REVISIONS				
ZONE	REV.	DESCRIPTION	DATE	APPR
	A	INITIAL RELEASE	4/1/16	MCW



Notes:  
3000 PSI rated.  
Chrome plated Rod.

**PROPRIETARY AND CONFIDENTIAL**  
THE INFORMATION CONTAINED IN THIS DRAWING IS THE SOLE PROPERTY OF Mike Witzgall. ANY REPRODUCTION IN PART OR AS A WHOLE WITHOUT THE WRITTEN PERMISSION OF Michael Witzgall IS PROHIBITED.

UNLESS OTHERWISE SPECIFIED DIMENSIONS ARE IN INCHES	
TOLERANCES	
FRACTIONS +/- 1/32 ANGLES +/- 1/2°	DECIMALS .X = .030 .XX = .010 .XXX = .005 .XXXX = .001
BREAK ALL SHARP EDGES 1/64 X 45°	
DRAWN BY:	MCW
ENG. APPROVAL:	ENG APP
MANF. APPROVAL:	MANF APP

Questions? Please contact Michael Witzgall (603)-818-9083 (C) (603)-539-4538 (Work) <a href="mailto:mike69440@metrocast.net">mailto:mike69440@metrocast.net</a>		
TITLE: L39 OS Curl Cylinder, 66mm Bore, 38 mm Rod, 360mm stroke_Extended		
SIZE <b>A</b>	DWG. NO. L39 Curl Cylinder Replace OS	REV <b>A</b>
DATE: 1/4/16	SCALE: 1:6	SHEET 1 OF 1

DETAIL A  
SCALE 1 : 2