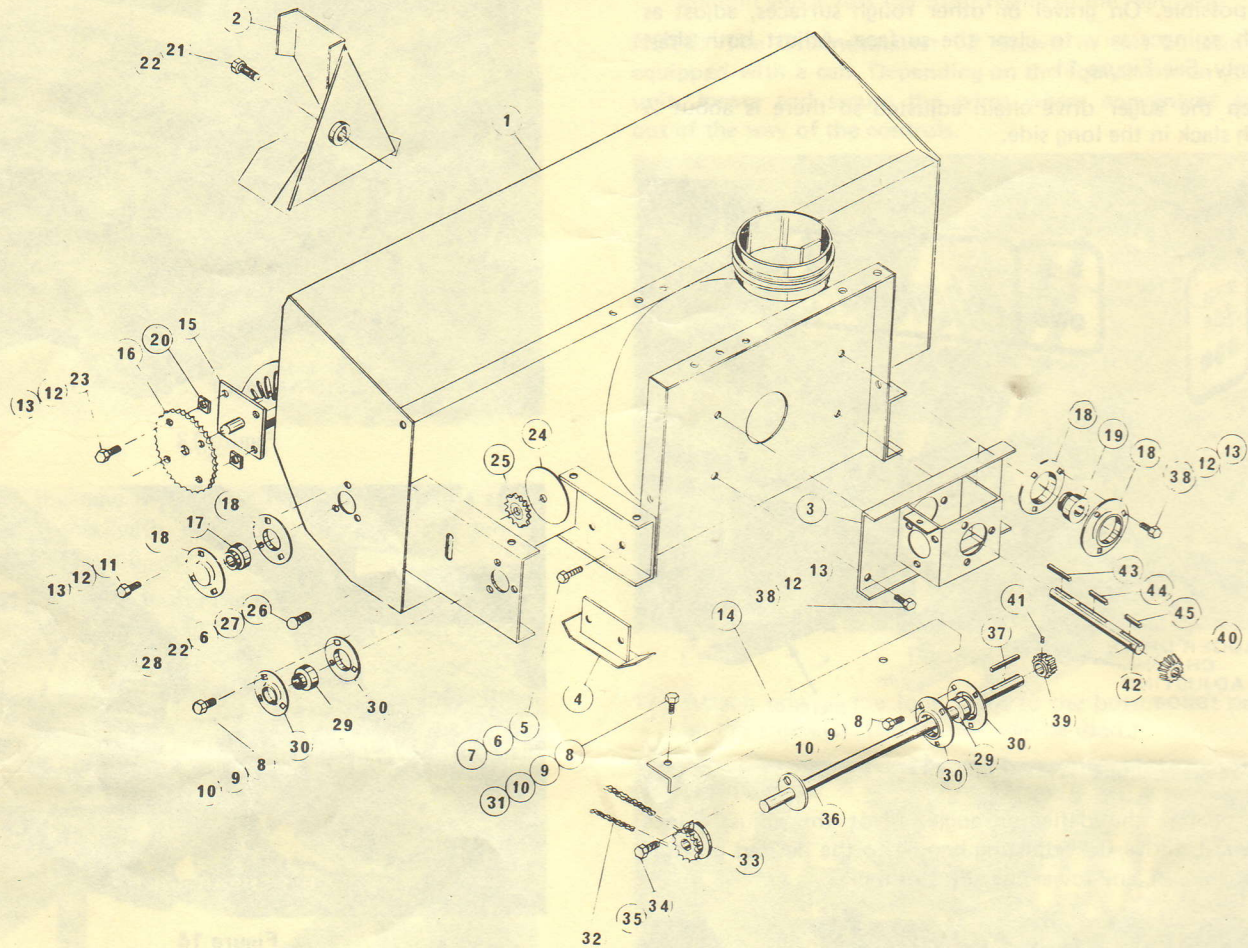


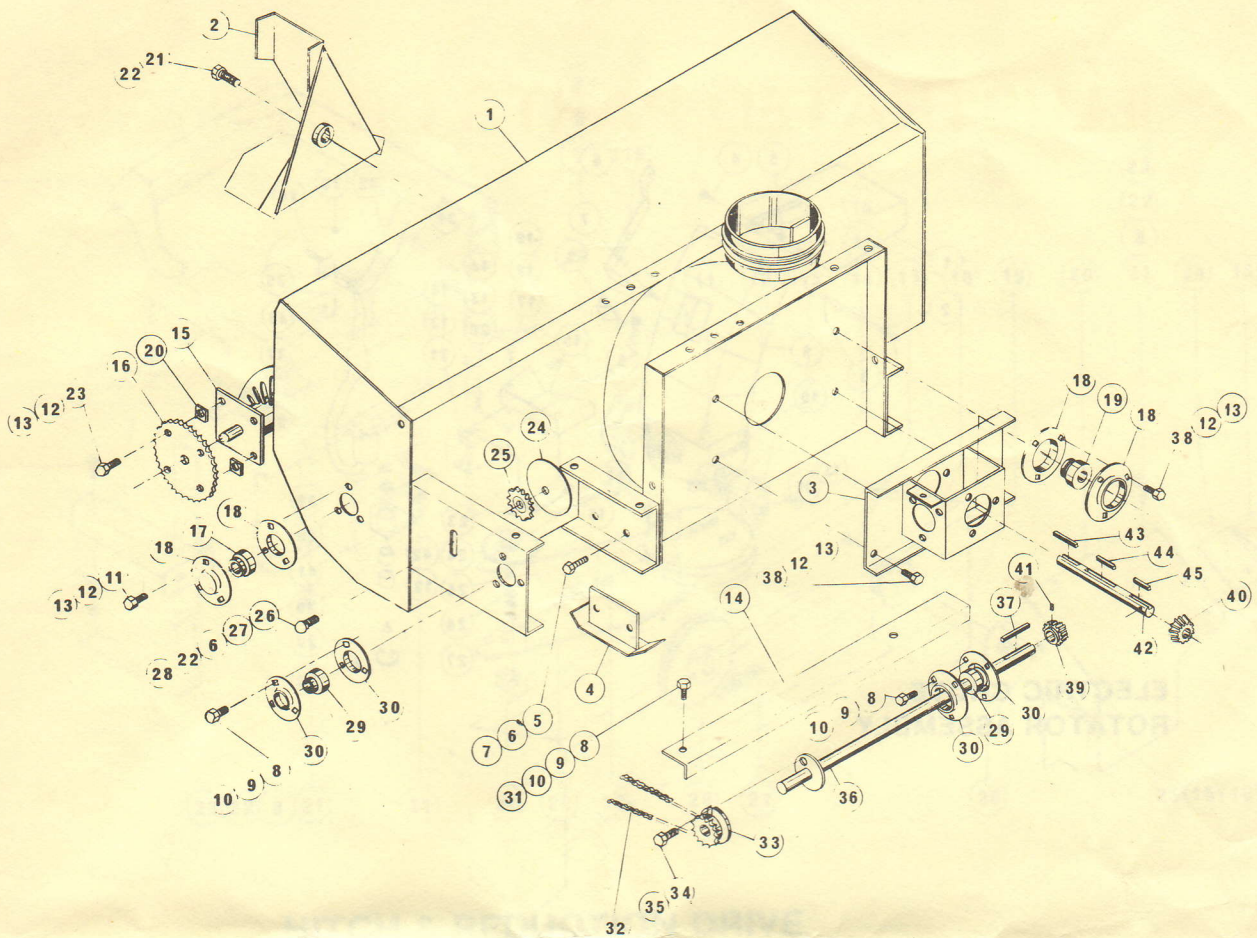
ILLUSTRATED PARTS DRAWINGS



AUGER ASSEMBLY

Item	Part No.	Description	Qty.
1	18-2456A	Moldboard Assembly	1
2	18-3014-A	Rotor Assembly	1
3	18-2468-A	Gear Case Assembly	1
4	18-2994-A	Skid Weldment	2
5	50-436	Hex Bolt $\frac{1}{2}$ " - 13 x $1\frac{1}{4}$	4
6	50-025	Flat Washer $\frac{5}{16}$ I.D.	7
7	50-163	Lock Nut $\frac{1}{2}$ - 13	4
8	50-540	Hex. Bolt $\frac{5}{16}$ N.C. x $\frac{3}{4}$	5
9	50-029	Lockwasher $\frac{5}{16}$	8
10	50-015	Hex. Nut $\frac{5}{16}$ N.C.	8
11	50-253	Hex. Bolt $\frac{3}{8}$ N.C. x 1"	10
12	50-018	Hex. Nut $\frac{3}{8}$ N.C.	20
13	50-030	Lockwasher	20
14	18-3919-A	Cross Shaft Shield	1
15	18-2461A	Auger Assembly	1
16	A540-20-0-OS	Sprocket	1
17	K20-001	Bearing	2
18	K-002	Flangette	8
19	K20-001	Bearing	2

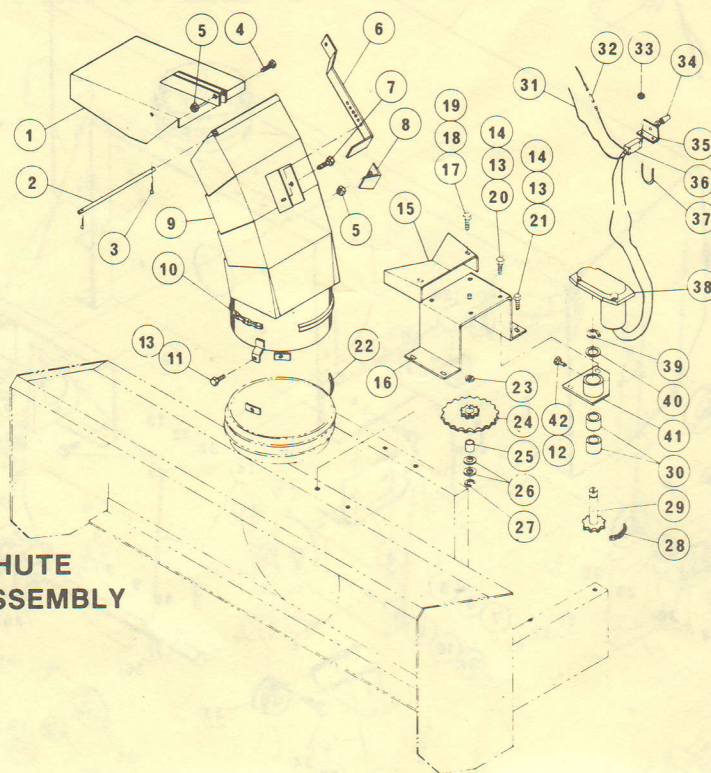
Ref. No.	Part No.	Description	No. Used
20	18-3689	Spacer	4
21	50-497	Hex. Bolt $\frac{1}{2}$ - 13 x 1"	1
22	50-031	Lock Washer $\frac{1}{2}$ "	2
23	50-188	Hex. Bolt $\frac{3}{8}$ - 16 x $1\frac{1}{2}$	4
24	18-3714	Shield	1
25	D-022	Chain Idler	1
26	50-374	Carriage Bolt $\frac{1}{2}$ - 13 x $2\frac{3}{4}$ "	1
27	50-099	Flat Washer $\frac{13}{16}$ I.D.	1
28	50-021	Hex. Nut $\frac{1}{2}$ - 13	1
29	K14-001	Bearing	2
30	K-001	Flangette	4
31	50-022	Flat Washer $\frac{5}{16}$ I.D.	1
32	701-300350	Roller Chain	1
33	18-3008-A	Sprocket - Auger Drive	1
34	50-692	Shear Bolt - $\frac{1}{4}$ - 20 x 1	1
35	50-435	Lock Nut $\frac{1}{4}$ -20	1
36	18-3740-A	Cross Shaft	1
37	E-33-1.00	Key $\frac{3}{16}$ x $\frac{3}{16}$ x 1"	1
38	50-187	Hex. Bolt $\frac{3}{8}$ - 16 x 1"	6



AUGER ASSEMBLY (Continued)

Ref. No.	Part No.	Description	No. Used
39	18-2415	Bevel Gear - 19 Teeth $\frac{7}{8}$ " Bore	1
40	18-2416	Bevel Gear - 19 Teeth $1\frac{1}{4}$ " Bore	1
41	50-201	Set Screw $\frac{5}{16}$ - 18 x $\frac{3}{8}$	4
42	18-2413	Rotor Shaft	1
43	E44-3.00	Key $\frac{1}{4}$ x $\frac{1}{4}$ x 3"	1
44	E44-1.50	Key $\frac{1}{4}$ x $\frac{1}{4}$ x $1\frac{1}{2}$	1
45	E44-1.625	Key $\frac{1}{4}$ x $\frac{1}{4}$ x $1\frac{5}{8}$	1

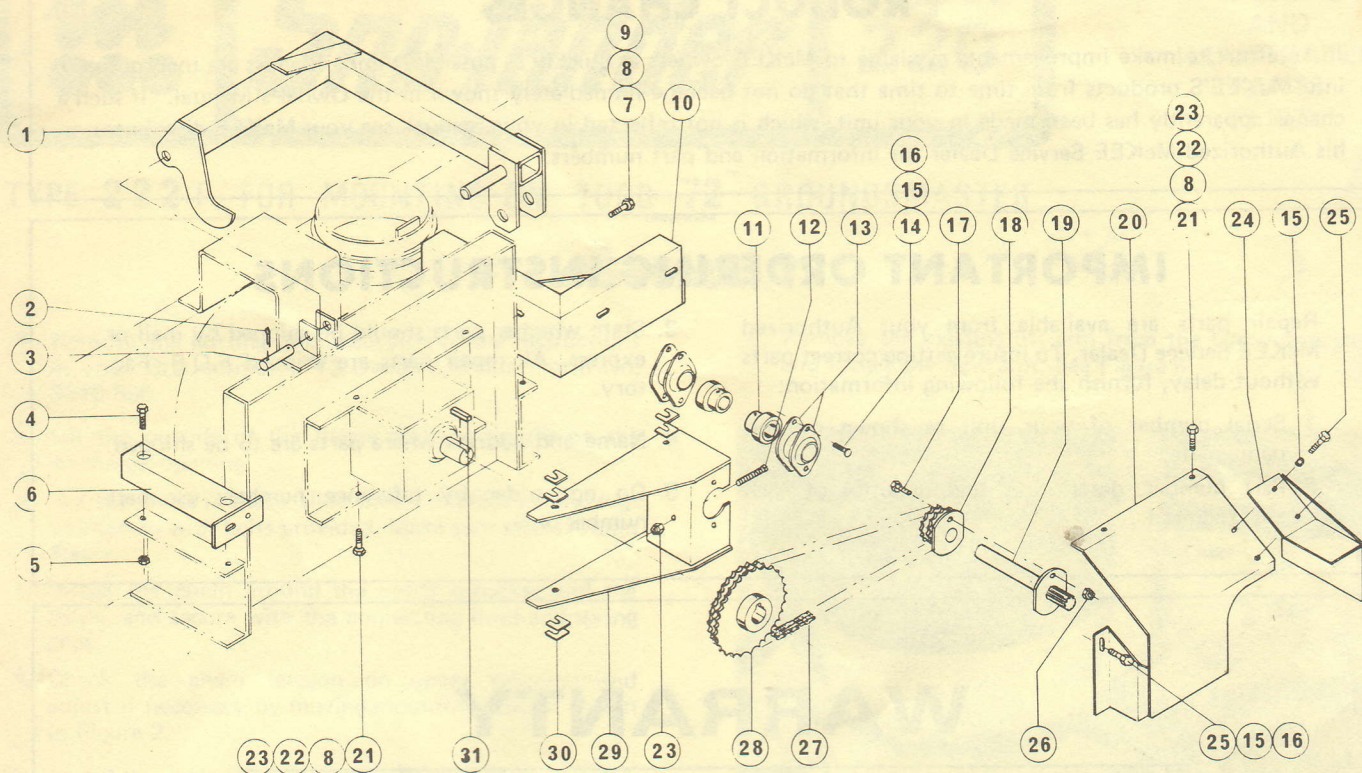
ELECTRIC CHUTE ROTATOR ASSEMBLY



Electric Chute Rotator Assembly

Item	Part No.	Description	Qty.
1	18-2523-A	Deflector	1
2	18-2290-A	Hinge Rod	1
3	50-172	Cotter Pin	2
4	50-436	Hex. Bolt 1/2-13 x 11/4	1
5	50-163	Locknut 1/2-13	2
6	18-2525	Deflector Adjusting Handle	1
7	50-497	Hex. Bolt 1/2-13 x 1"	1
8	18-2238	Adjustor Lock	1
9	18-3754-A	Chute	1
10	701-300660	Chute Rotator Chain	1
11	50-708	Hex. Bolt 3/8-24 UNF x 3/4	3
12	50-030	Lockwasher	4
13	50-023	Flat Washer	9
14	50-018	Hex. Nut 3/8 NC	6
15	18-2572-A	Chain Shield	1
16	18-2472-A	Chute Rotator Assembly	1
17	50-387	Hex. Bolt 5/16 NC x 1/2" LG	2
18	50-101	Flat Washer	2
19	50-011	Hex. Nut 1/4"	2
20	50-216	Hex. Bolt 3/8-16 x 11/4	2
21	50-187	Hex. Bolt 3/8 NC x 1" LG	4

Item	Part No.	Description	Qty.
22	18-3020-A	Slip Ring Weldment	3
23	18-2581	Idler Spacer	1
24	18-3027-A	Idler	1
25	JB-12-10-16	Bushing	1
26	50-772	Machine Bushing	2
27	50-526	Retaining Ring	1
28	701-300720	Chain-Chute Actuator	1
29	18-3025-A	Drive Shaft	1
30	JB-16-12-32	Bronze Bushing	2
31	18-2627-A	Wiring Harness	1
32	18-2790	Fuse 20 AMP	1
33		Nut	2
34	18-2588	Switch Boot	1
35	18-2529	Electrical Switch Bracket	1
36	18-2589	Electrical Toggle Switch	1
37		U-Clamp	1
38	18-2454-A	Motor & Gear Box Assembly	1
39	50-500	Retaining Ring	1
40	50-454	Bushing	1
41	18-2568-A	Actuator Mount	1
42	50-187	Hex. Bolt 3/8-16 x 1" LG	1



HITCH & REDUCTION DRIVE ASSEMBLY

Item	Part No.	Description	Qty.
1	18-2484-A	Lift Arm Assembly	1
2	50-110	Cotter Pin 5/32 x 11/4"	2
3	18-2587	Upper Lift Pin	1
4	50-497	Hex. Bolt 1/2 - 13 x 1"	4
5	50-163	Lock Nut 1/2 - 13	4
6	18-2494-A	Mounting Bracket (L.H.)	1
7	50-187	Hex. Bolt 3/8 - 16 x 1"	1
8	50-023	Flat Washer 7/16 I.D.	4
9	50-019	Lock Nut 3/8 - 16	1
10	18-2491-A	Mounting Bracket (R.H.)	1
11	K16-006	Bearing 1" I.D. c/w Locking Collar	2
12	50-1339	Set Screw 3/8 - 16 x 4"	1
13	K-005	Flangette	4
14	50-041	Carriage Bolt 5/16 - 18 x 3/4	4
15	50-029	Lock Washer 5/16	7
16	50-015	Hex. Nut 5/16 - 18	5
17	50-141	Hex. Bolt 1/4 - 20 x 1"	1
18	18-2788-A	Shear Sprocket	1
19	18-2507-A	Counter Shaft	1
20	18-2509-A	Shield Assembly	1
21	50-216	Hex. Bolt 3/8 - 16 x 11/4	4
22	50-030	Lock Washer 3/8	4
23	50-018	Hex. Nut 3/8 - 16	5
24	18-2791A	P.T.O. Shield	1
25	50-387	Hex. Bolt 5/16 - 18 x 1/2	3
26	50-435	Lock Nut 1/2 - 20	1
27	701-300250	Roller Chain	1
28	18-2785	Sprocket	1
29	18-378ZA	Chain Drive Mount Weldment	1
30	18-3786	Shim	8
31	E44-1.625	Key 1/4 x 1/4 x 15/8	1