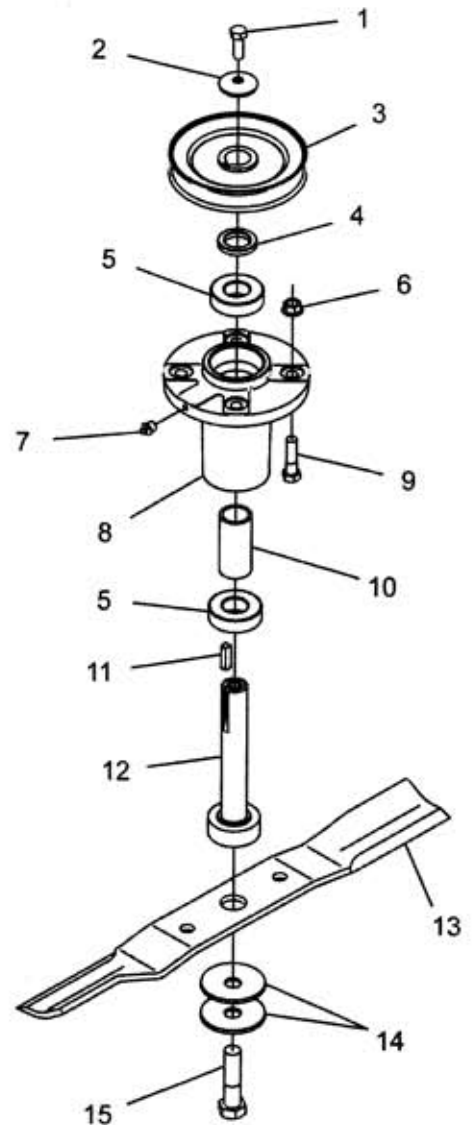


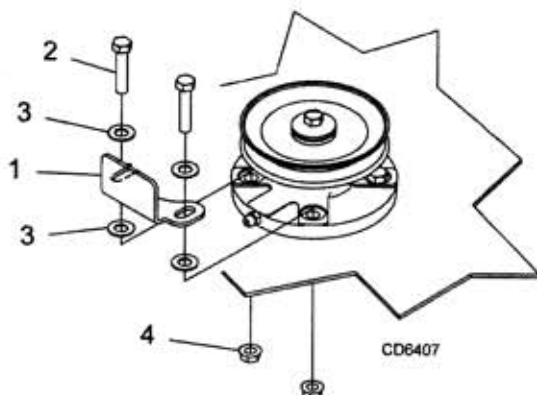
RDC54, RD60 & RD72 BLADE & SPINDLE ASSEMBLY

REF	PART	QTY	DESCRIPTION
A	1009080	1	Complete spindle assembly (includes 1, 2, 4, 5 through 12, 14 & 15)
1	64518	1	3/8 NF x 1 HHCS GR5
2	70005	1	Cup washer
3	1008059	1	Sheave (RDC54) -or-
3	1008057	1	Sheave (RD60) -or-
3	1008040	1	Sheave (RD72)
4	1008055	1	Spacer
5	72933	2	Spindle bearing
6	14350*	4	3/8 NC Flange locknut
7	1972*	1	1/4 Tapered grease fitting
8	1008053	1	Spindle housing
9	976*	4	3/8 NC x 1-1/2 HHCS GR5
10	1008052	1	Spacer
11	70072*	1	Square key
12	1008042	1	Shaft assembly
13	78127KT	1	Blade kit, high suction 18.7" (includes 3 blades)(RDC54) -or-
13	1001513KT	1	Blade kit, high suction 21" (includes 3 blades)(RD60) -or-
13	1008199KT	1	Blade kit, high suction 25" (includes 3 blades)(RD72)
14	10635	2	Cup washer
15	1008095	1	5/8 NF x 2 HHCS GR5

* Standard Hardware - Obtain Locally



RDC54, RD60, RD72 BELT GUIDE (OPTIONAL)



REF	PART	QTY	DESCRIPTION
A	1008181	1	Belt guide kit
1	N/A	1	Belt guide
2	3231*	2	3/8 NC x 2 Cap screw GR5
3	21575*	4	3/8 SAE Flat washer
4	14350*	2	3/8 NC Flange lock nut (not included)