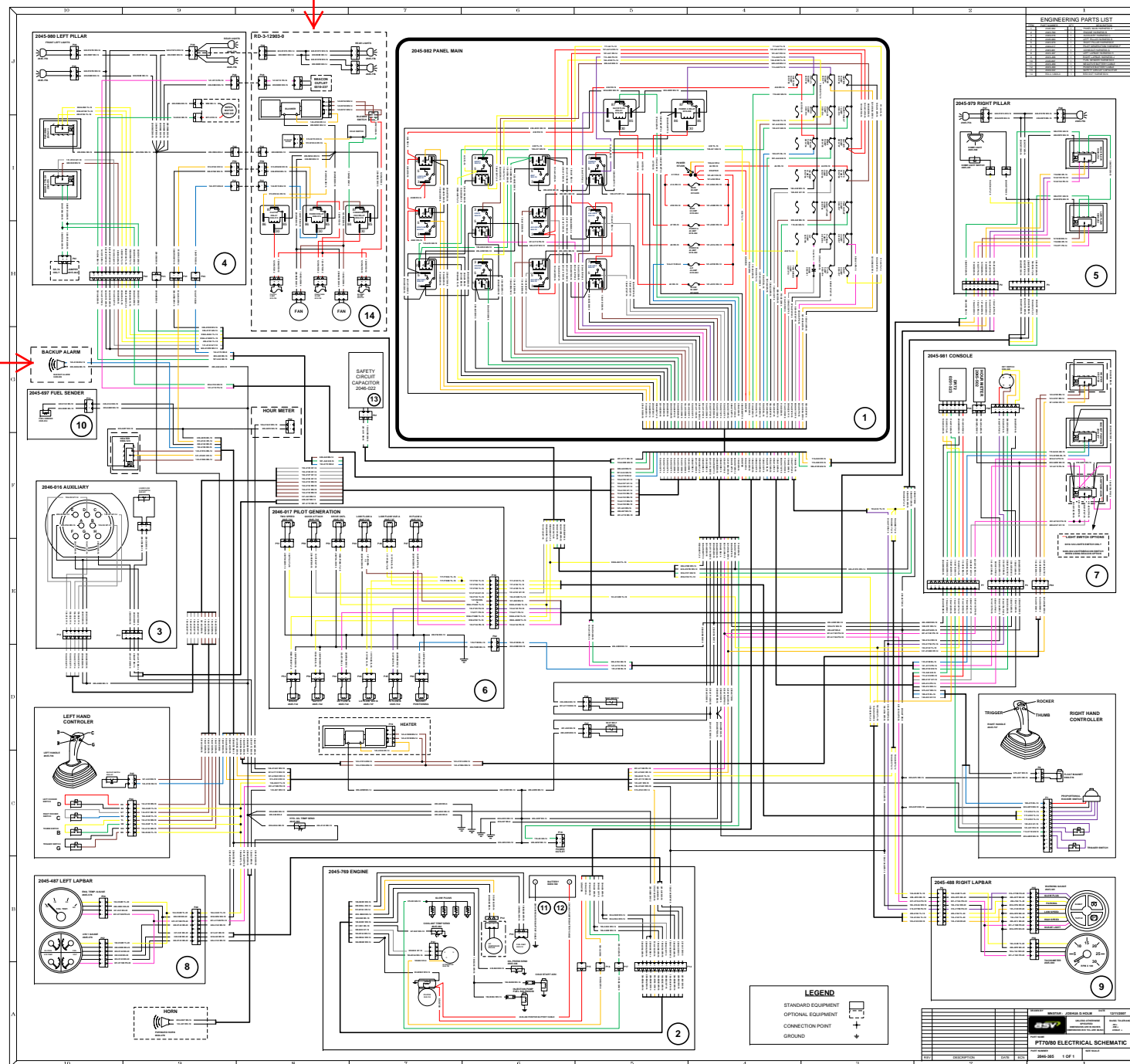


A/C Unit

Standard on PT machines

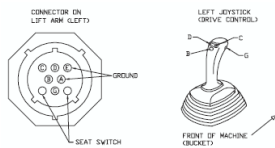
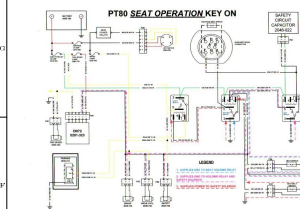
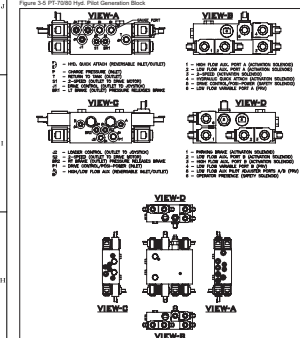


ENGINEERING PARTS LIST

QTY	PART NO.	DESCRIPTION
1	2045-982	PANEL MAIN
1	2045-980	LEFT PILLAR
1	2045-979	RIGHT PILLAR
1	2045-981	CONSOLE
1	2045-983	PILOT GENERATOR
1	2045-984	LEFT LAPBAR
1	2045-985	RIGHT LAPBAR
1	2045-986	LEFT HAND CONTROLLER
1	2045-987	RIGHT HAND CONTROLLER
1	2045-988	ENGINE
1	2045-989	FUEL SENDER
1	2045-990	BACKUP ALARM
1	2045-991	SAFETY CIRCUIT CAPACITOR
1	2045-992	REAR METER
1	2045-993	FAN

### Hydraulic Pilot Generation Block

Figure 3-5 PT-7000 Pilot Generation Block



PT7000 ELECTRICAL SCHEMATIC

QTY	PART NO.	DESCRIPTION
1	2045-982	PANEL MAIN
1	2045-980	LEFT PILLAR
1	2045-979	RIGHT PILLAR
1	2045-981	CONSOLE
1	2045-983	PILOT GENERATOR
1	2045-984	LEFT LAPBAR
1	2045-985	RIGHT LAPBAR
1	2045-986	LEFT HAND CONTROLLER
1	2045-987	RIGHT HAND CONTROLLER
1	2045-988	ENGINE
1	2045-989	FUEL SENDER
1	2045-990	BACKUP ALARM
1	2045-991	SAFETY CIRCUIT CAPACITOR
1	2045-992	REAR METER
1	2045-993	FAN