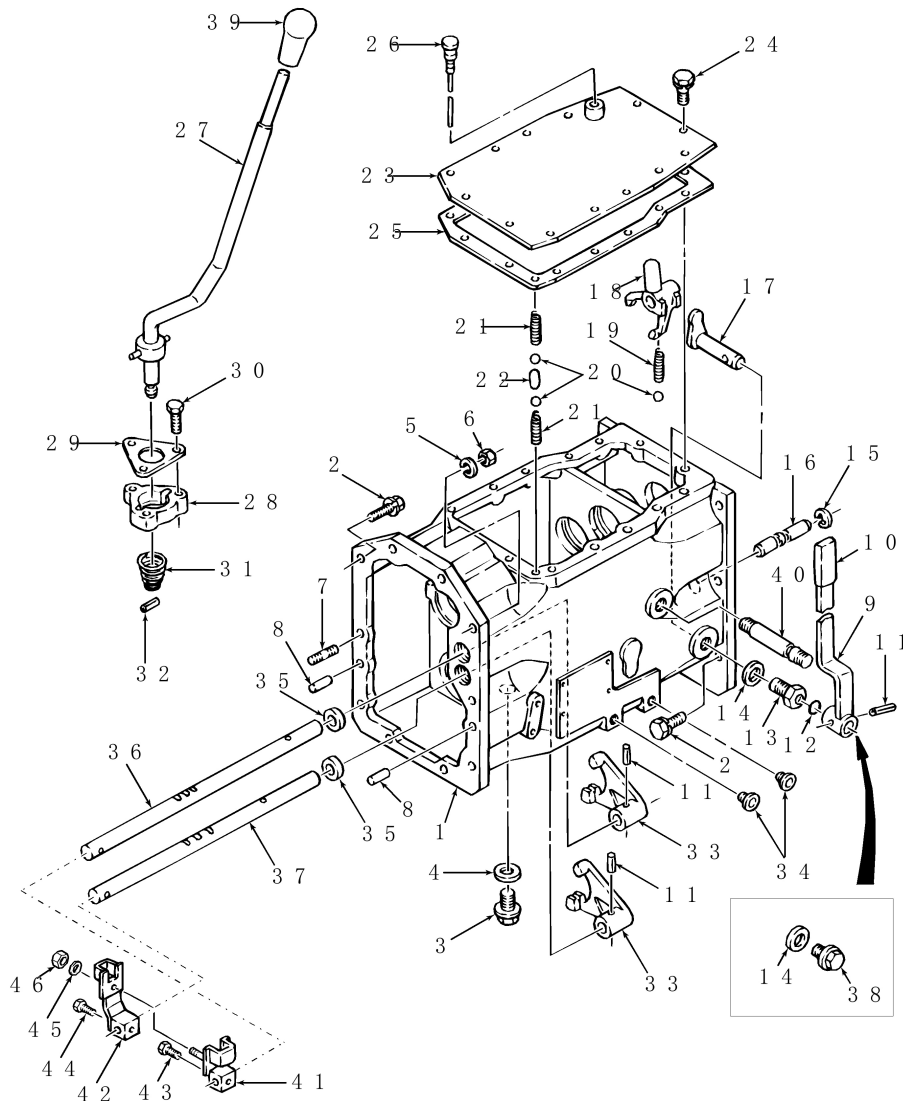


1715 - 3 Cyl
Compact Tractor 15
Series (02/93 - 08/97)

03 - Transmission

07c03 - Front
Transmission Case &
Shifter W/9 X 3



Variants

-

Model Information

,

Serial Number ranges

-

Production Dates

-

| # | Part # | Part Name | Description | Qty |
|----|--------------|---|--|-----|
| 1 | SBA322014731 | CASE | Assy, Transmission, Includes Ref 7, 8 & 40 | 1 |
| 2 | SBA011511030 | CAPTIVE WASHER SCREW Hex, M10 x 30, G5 | SCREW, CAPTIVE WASHER, Hex, M10 x 1.5 x 30, G5 | 13 |
| 3 | SBA064600016 | PLUG | - | 1 |
| 4 | SBA025100016 | SEALING WASHER 16.4mm ID x 27mm OD x 2mm Thk | Seal, #16 | 1 |
| 5 | 140028 | LOCK WASHER 10.2mm ID x 18.1mm OD x 2.2mm Thk | WASHER, LOCK, M10 | 1 |
| 6 | SBA021010010 | NUT M10 x 1.25 | - | 1 |
| 7 | SBA012111030 | STUD M10 x 30 | - | 1 |
| 8 | SBA030501025 | BALL STUD M10 x 25 L | DOWEL, , Pin M10 x 25 L | 2 |
| 9 | SBA324103000 | LEVER | Change, 4WD | 1 |
| 10 | SBA398181060 | HANDLE GRIP | Grip, Orange, 4WD | 1 |
| 11 | SBA030300625 | PIN | Spring, 6" x 25" | 2/3 |
| 12 | SBA052109078 | O-RING 2.4mm Thk x 14.8mm ID | P15, 4WD | 1 |
| 13 | SBA324510400 | GUIDE | Shift, 4WD | 1 |



| # | Part # | Part Name | Description | Qty |
|----|--------------|---|---|-----|
| 14 | SBA025100020 | SEALING WASHER 16.4mm ID x WASHER, SEALING 27mm OD x 2mm Thk | | 1 |
| 15 | SBA036800012 | SNAP RING | Ring, Snap, 4WD | 1 |
| 16 | SBA324312210 | ROD | Shifter, 4WD | 1 |
| 17 | SBA324200890 | ARM | Shift, 4WD | 1 |
| 18 | SBA324411680 | SHIFTER FORK | FORK, SHIFTER, 4WD | 1 |
| 19 | SBA398210280 | SPRING | 4WD | 1 |
| 20 | 86624944 | BALL 8.73mm OD, Gr 24 | - | 2/3 |
| 21 | SBA398210460 | SPRING | - | 2 |
| 22 | SBA324560050 | PIN | - | 1 |
| 23 | SBA322200440 | COVER | Case | 1 |
| 24 | SBA011510820 | CAPTIVE WASHER SCREW Hex, M8 x 20, G5 | SCREW, CAPTIVE WASHER, Hex, M8 x 1.25 x 20, G5 | 14 |
| 25 | SBA324990241 | GASKET | - | 1 |
| 26 | SBA398400322 | DIPSTICK | - | 1 |
| 27 | SBA324105380 | LEVER | Change | 1 |
| 28 | SBA324510670 | GUIDE | Shift | 1 |
| 29 | SBA324610850 | PLATE | Cover, Shift | 1 |
| 30 | SBA011510840 | BOLT M6 x 40mm | - | 3 |
| 31 | SBA398214840 | SPRING | - | 1 |
| 32 | SBA030103225 | COTTER PIN M3 x 25 L | PIN, SPLIT (COTTER), M3 x 25 L | 1 |
| 33 | SBA324411580 | SHIFTER FORK | FORK, SHIFTER | 2 |
| 34 | SBA398460060 | PLUG | Blank | 4 |

| # | Part # | Part Name | Description | Qty |
|----|--------------|---|---|-----|
| 35 | SBA050203115 | SEAL 28mm ID x 40mm OD x 8mm Thk | SEAL, OIL | 2 |
| 36 | SBA324312700 | ROD | Shifter, 2-R | 1 |
| 37 | SBA324312690 | ROD | Shifter, 1-3 | 1 |
| 38 | SBA064700020 | PLUG | Drain 2WD | 1 |
| 39 | SBA398180880 | KNOB | Grip | 1 |
| 40 | SBA355500550 | SHAFT | - | 1 |
| 41 | SBA324202161 | ARM | Shifter, 2-R | 1 |
| 42 | SBA324202150 | ARM | Shifter, 1-3 | 1 |
| 43 | SBA011310625 | BOLT Hex, M6 x 25, CI 8.8 | SCREW, CAPTIVE WASHER, Hex, M6 x 25, CI 8.8 | 1 |
| 44 | SBA011310635 | CAPTIVE WASHER SCREW Hex, M6 x 35, CI 8.8 | SCREW, CAPTIVE WASHER, Hex, M6 x 35, CI 8.8 | 1 |
| 45 | 9824259 | WASHER 6.4mm ID x 12mm OD M6 x 1.6mm Thk | | 1 |
| 46 | SBA022400006 | NUT | - | 1 |