

**Mounting Instructions
With Parts Listing and Drawings
For**

FREDRICKS FAMILY 2 (1510)

2-POST FOLDING ROLLBAR

**Part No.
A-11449**

Manufactured by:



BOX 718 • LITCHFIELD, MINNESOTA 55355

Ph: (320) 693-3221 Fax: (320) 693-7252

1-800-222-5463

www.800cabline.com

INSTALLATION INSTRUCTIONS FOR ROLLOVER PROTECTION SYSTEM (ROPS)

This manual contains assembly, operating, maintenance and safety instructions for your ROPS. Before Installing the ROPS or operating a machine equipped with a ROPS, carefully read these instructions completely. The ROPS will reduce the risk of serious or fatal injury in the unlikely event of a tip over although the system cannot protect the operator from all possible injuries. By following the operating, maintenance, and safety instructions, you will prolong the life of the machine and the ROPS, maintain its maximum efficiency and promote safe operation.

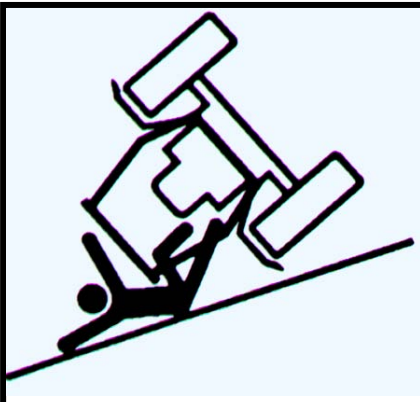
If additional information is needed, contact your authorized equipment dealer or distributor. **Keep this manual with the operator's manual for the machine for future reference.**

IMPORTANT:

1. Do not cut, drill, modify or repair ROPS in any manner.
2. Always replace a damaged ROPS.
3. Always use the seatbelt and ROPS together.
4. Frequently inspect rollbar and seat belts for damage or loose hardware.
5. Use extreme care when working close to fences, ditches, trees and on hills.
6. Check overhead clearances carefully before driving under any objects.
7. Do not leave operator's position while unit is running.
8. Do not carry riders.

WARNING!

This ROPS is certified for use on machines with a maximum gross vehicle weight (GVW) of 2600 LB. The GVW INCLUDES the weight of the base machine, operator, fuel, ROPS, and other attachments and payloads. When attachments are added, causing the GVW of the machine to be more than 2600 LB., the ROPS may not provide adequate protection resulting in serious injury or death. Use caution when installing attachments and **DO NOT EXCEED** the GVW rating of the ROPS.



WARNING!

SERIOUS INJURY OR DEATH MAY RESULT FROM MACHINE ROLLOVER

- DO NOT OPERATE MACHINE ON STEEP SLOPES OR NEAR DROP OFFS
- ALWAYS USE SEAT BELTS
- AVOID SHARP AND/OR QUICK TURNS
- DO NOT EXCEED THE MACHINE WEIGHT RATING OF THE ROPS

WARNING

ROLLOVER MAY CAUSE PERMANENT INJURY OR DEATH.

- ROPS RAISES THE CENTER OF GRAVITY AND REDUCES STABILITY ON SLOPES.
- SUDDEN STARTS OR TURNS ON RAMPS OR SLOPES CAN CAUSE OVERTURN.
- USE GREATER CARE ON RAMPS AND AS THE SLOPE INCREASES.

MOUNTING INSTRUCTIONS

2-Post Folding Rollbar A-11449 Family 2

Machine Preparation

- 1) Park the tractor on a level surface and set the brakes.
- 2) Block rear of tractor and remove both rear tires (Optional).

Lower ROPS Weldment Installation

- 3) Remove (6) metric M12x1.75Cx35MM hex head bolts from each side of the rear axle bearing housing. Do not use these bolts to mount ROPS.
- 4) Place rollbar onto the tractor and secure using (6) ½" lock washers and (6) hex head bolts, M12x1.75Cx50MM, grade 10.9, supplied with the ROPS hardware kit. See Figure 1. Torque bolts to 80 ft/lb or 108 n-m.
- 5) Re-install rear tires.



Figure 1

MOUNTING INSTRUCTIONS

2-Post Folding Rollbar A-11449 Family 2

Upper Hoop Installation

- 6) Install the upper rollbar hoop. Secure each side of hoop with a ½-13unc x 3.00 grade 5 bolt, a pin retainer washer and a ½-13unc grade 5 center-lock nut into the upper mount hole. Tighten only until the nut contacts the bracket. Do not over tighten. Hoop should pivot freely, up and down. See Figure 2.
- 7) Install (1) EPDM washer onto each of the hitch pins. Position the top hoop into the up-right location and install the hitch pins. See Figure 2.
- 8) Attach (1) plastic lanyard to the handle of each hitch pin. Insert one end of the lanyard through the retaining washer and attach the spring pin to the eye in the lanyard. Install the spring pins into the hitch pins.



Figure 2

MOUNTING INSTRUCTIONS

2-Post Folding Rollbar A-11449 Family 2

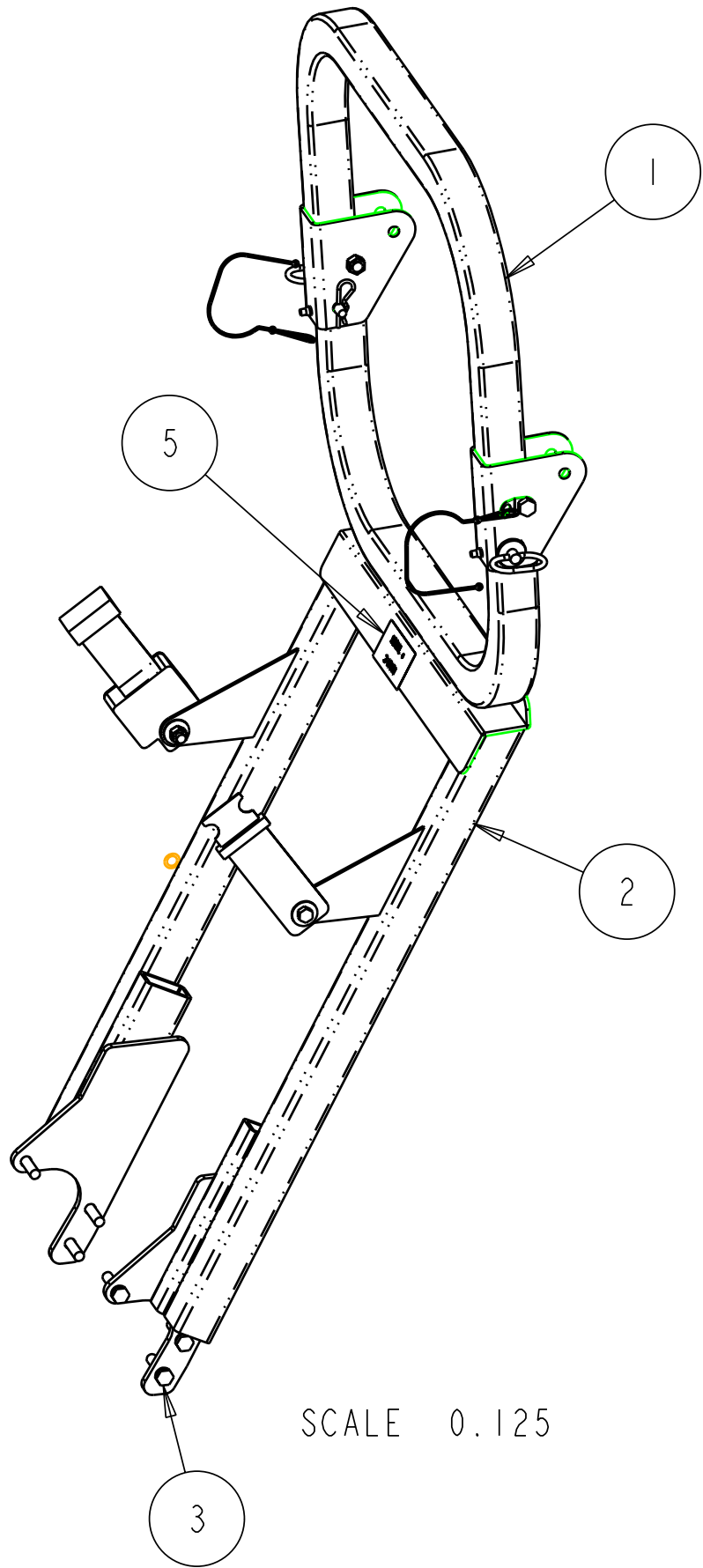
Seatbelt Installation

- 9) Install the seat belt to each side of the rollbar using (2) 7/16-14unc x 1.25 grade 5 bolts, (4) 7/16" flat washers and (2) 7/16-14unc grade 5 nylock nuts. See Figure 3.



Figure 3

REV.	DCR NO.	DESCRIPTION	DRAFTSMAN	DATE
------	---------	-------------	-----------	------



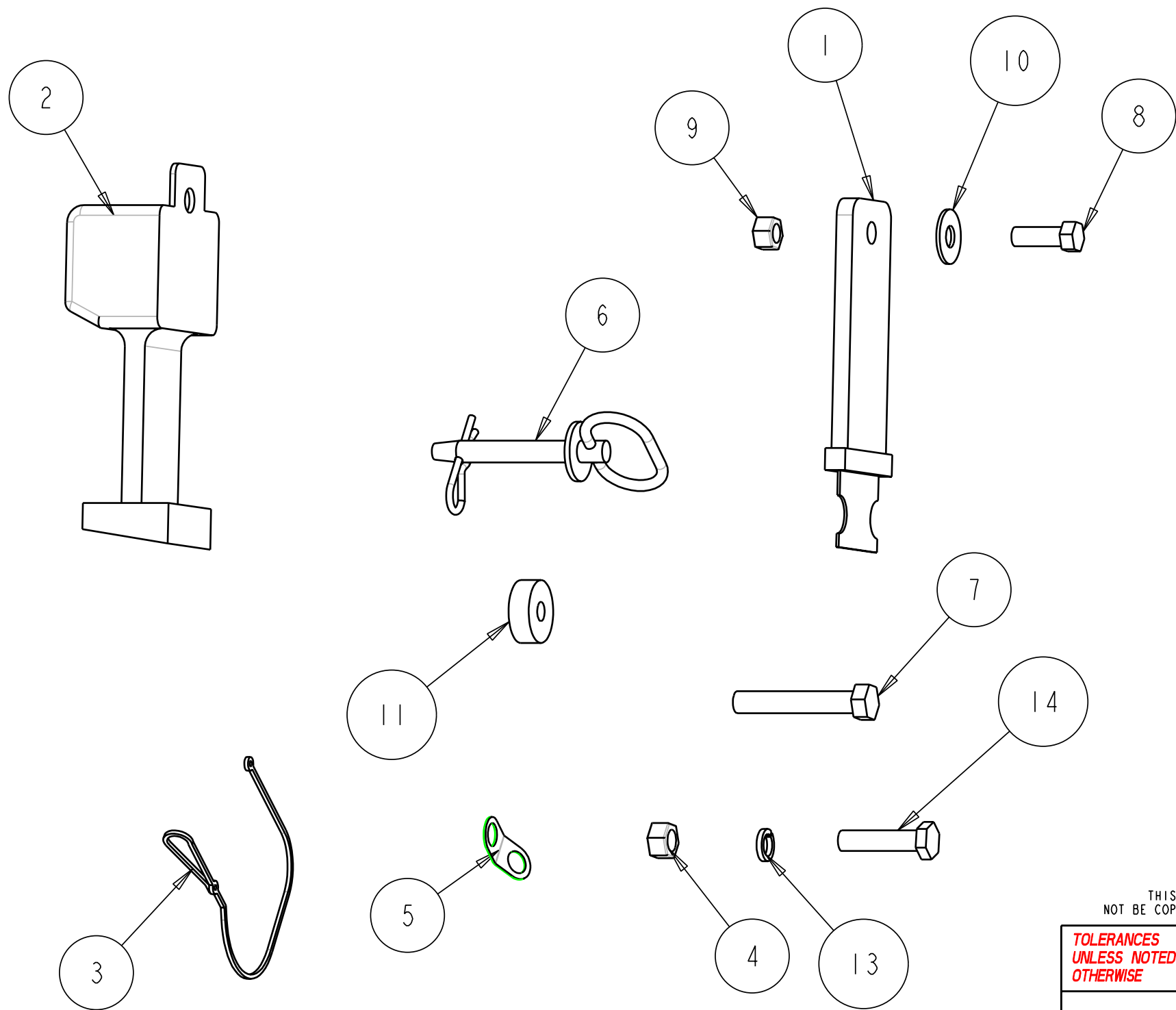
ITEM #	DESCRIPTION	QTY
1	4-15013_UPPER_HOOP_ASM	1
2	2-16153_WELDMENT_LOWER	1
3	4-15077_HARDWARE_KIT_FAM_2	1
4	3-17913_POWDER_PAINT_24	SEE BOM
5	3-17171_DECAL_CP_SERIAL_NUMBER	1

THIS DOCUMENT CONTAINS CONFIDENTIAL INFORMATION AND IS THE PROPERTY OF CUSTOM PRODUCTS OF LITCHFIELD, INC. AND MAY NOT BE COPIED, REPRODUCED OR DISCLOSED IN ANY MANNER WITHOUT EXPRESSED WRITTEN CONSENT FROM CUSTOM PRODUCTS OF LITCHFIELD, INC.

TOLERANCES UNLESS NOTED OTHERWISE	CUSTOMER NAME & MOD NO.: FREDRICKS YANMAR 2		MATL SPEC:		
	CUSTOM PRODUCTS 1715 SOUTH SIBLEY AVE. LITCHFIELD, MN 55355				
.X ± .09 .XX ± .06 .XXX ± .03 HOLE SIZE +0.05/-0.010 ANGLE ± .5°	TITLE 2-POST ROPS FOLDING		DRWG SIZE B	DRWG NO. A-11449	REV LEVEL -
	DRAWN: CAD		DATE: 8-8-06		

NAME: CAD2 OBJECT: 4-15077 DATE: 08-Aug-06 11:31:15

REV.	DCR NO.	DESCRIPTION	DRAFTSMAN	DATE
A	-	SEATBELT 3-18524 WAS 3-10127	CAD	07-21-06



ITEM #	DESCRIPTION	QTY
1	3-18524A_SEAT_BELT	1
2	3-18524B_SEAT_BELT	1
3	3-17811_LANYARD_NYLON_180_LOOP	2
4	3-10485_50_NUT_HEX_CNTRLOCK	2
5	3-18413_WASHER_FORMED_RETAIN_50	2
6	3-18417_HITCH_PIN_500	2
7	3-10131_50_HHCS_X300	2
8	3-10026_44_HHCS_X125	2
9	3-10472_4375_NYLOCK	2
10	3-10166_4375_WASHER	4
11	3-18418_WASHER_EPDM_500	2
12	05-10616_MOUNT_INSTR_A-11449	SEE BOM
13	3-10079_50_LOCK_WASHER	6
14	3-13295_HHCS_M12X50	6

SCALE 0.333

THIS DOCUMENT CONTAINS CONFIDENTIAL INFORMATION AND IS THE PROPERTY OF CUSTOM PRODUCTS OF LITCHFIELD, INC. AND MAY NOT BE COPIED, REPRODUCED OR DISCLOSED IN ANY MANNER WITHOUT EXPRESSED WRITTEN CONSENT FROM CUSTOM PRODUCTS OF LITCHFIELD, INC.

TOLERANCES UNLESS NOTED OTHERWISE	CUSTOMER NAME & MOD NO.: FREDRICKS FAM 2		MATL SPEC:	
	CUSTOM PRODUCTS 1715 SOUTH SIBLEY AVE. LITCHFIELD, MN 55355			
.X ± .09 .XX ± .06 .XXX ± .03 HOLE SIZE +.05/-.010 ANGLE ± .5 °	TITLE HARDWARE KIT	DRWG SIZE	DRWG NO.	REV LEVEL
		B	4-15077	A
of 7		DRAWN: CAD	DATE:	7-20-06