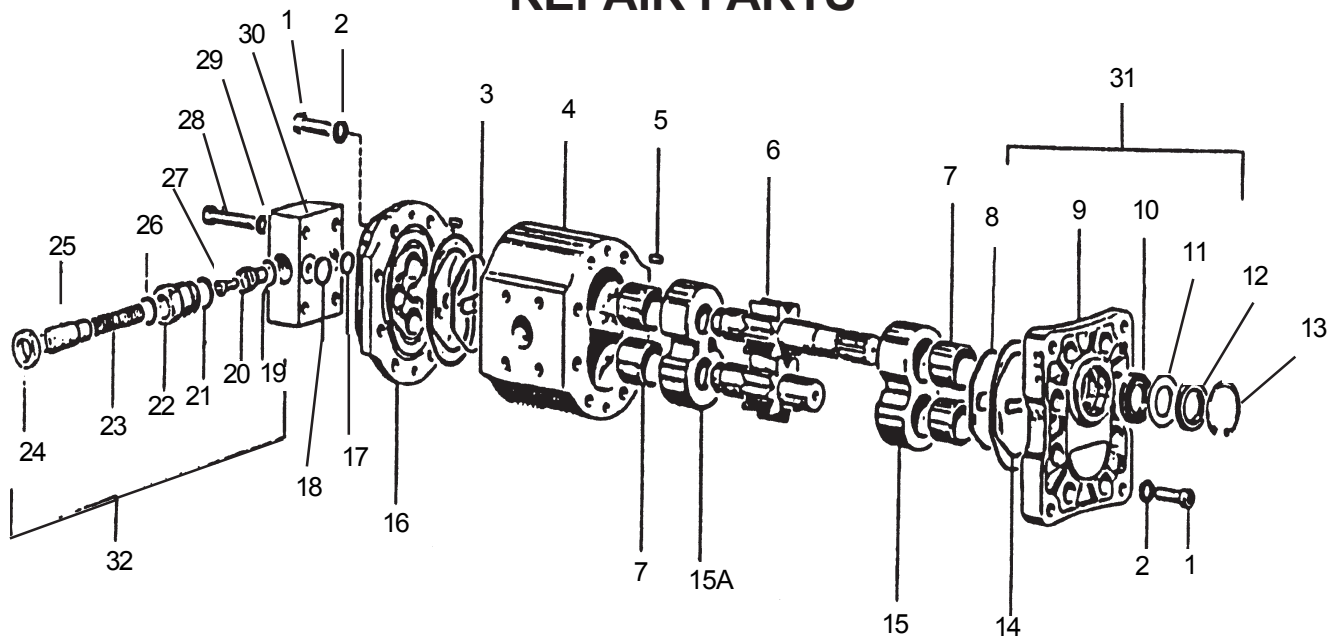


Jun. 1987
to
Sep. 1992

HYDRAULIC MOTOR P/N 00754113 WING SECTION RH REPAIR PARTS

S/N HY15D-46046
to
S/N HY15E-01527



ITEM	PART NO	QTY	DESCRIPTION	ITEM	PART NO	QTY	DESCRIPTION
1	00754585	16	Bolt	22	00754608	1	Relief
2	00754586	16	Lockwash	23	00754609	1	Relief
3	00754552	2	Ring	24	00754610	1	Nut
4	00754588	1	Body	25	00754611	1	Relief
5	00754589	4	Dowel	26	00754612	1	O-Ring
6	00754590	1	Drive Gear	27	00754613	1	Relief
7	00754591	4	Bearing	28	00754614	4	Bolt
8	00754592	2	O-Ring	29	00754577	4	Lockwasher
9	00754593	1	Flange	30	00754615	1	Relief Manifold
10	00754595	1	Bearing	31	00754616	ref	Bottom Flange Assembly
11	00754596	1	Shim	32	00754620	ref	Relief Valve Kit (1500psi)
12	00754597	1	Seal		00754617	ref	Seal Kit
13	00754598	1	Snap Ring				
14	00754599	2	O-Ring				
15	00754600	1	Gear Housing				
15A	00754601	1	Gear Housing				
16	00754602	1	Body				
17	00754603	2	O-Ring				
18	00754604	1	O-Ring				
19	00754605	1	O-Ring				
20	00754606	1	Relief				
21	00754607	1	O-Ring				