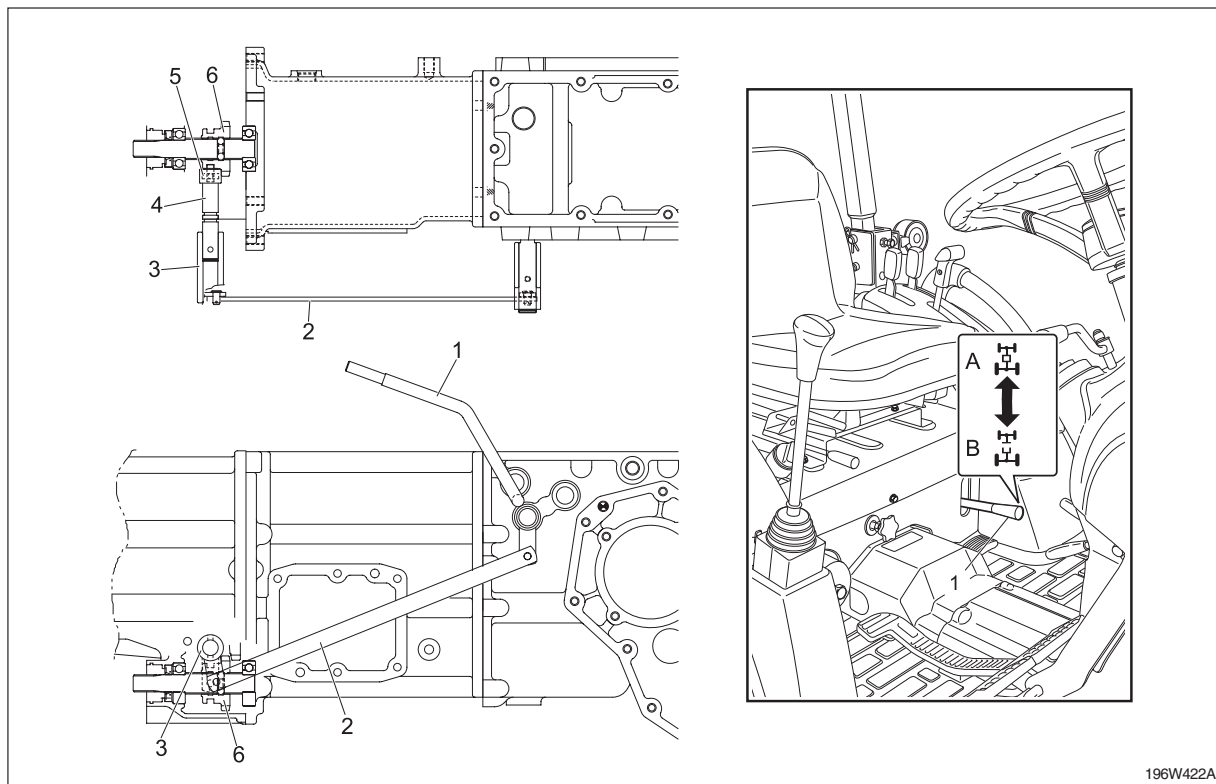


## 2.3.5 FRONT WHEEL DRIVE SHIFT



196W422A

- |                             |                             |
|-----------------------------|-----------------------------|
| (1) Front wheel drive lever | (4) Front wheel drive shaft |
| (2) Front wheel rod         | (5) Front wheel drive arm   |
| (3) Front wheel drive arm 2 | (6) Front wheel shifter     |

- (A) Engaged  
(B) Disengage

- The front wheel drive lever (1) is connected to front wheel rod (2), front wheel drive arm 2 (3), front wheel drive shaft (4), front wheel drive arm (5) and front wheel shifter (6).  
When the front wheel drive lever (1) is moved to the (A) side, the front wheel drive is "Engaged".  
When the front wheel drive lever (1) is moved to the (B) side, the front wheel drive is "Disengaged".

GENERAL

ENGINE

CLUTCH

TRANSMISSION

HST

REAR AXLE

BRAKE

FRONT AXLE

STEERING

HYDRAULIC

ELECTRIC

INDEX