

Attachment Illustrated Parts List



MASSEY FERGUSON
LAWN & GARDEN EQUIPMENT

AGCO ALLIS

Simplicity
MANUFACTURING, INC.

500 N Spring Street / PO Box 997
Port Washington, WI 53074-0997 USA

© Copyright 2000 Simplicity Manufacturing, Inc. All Rights Reserved.

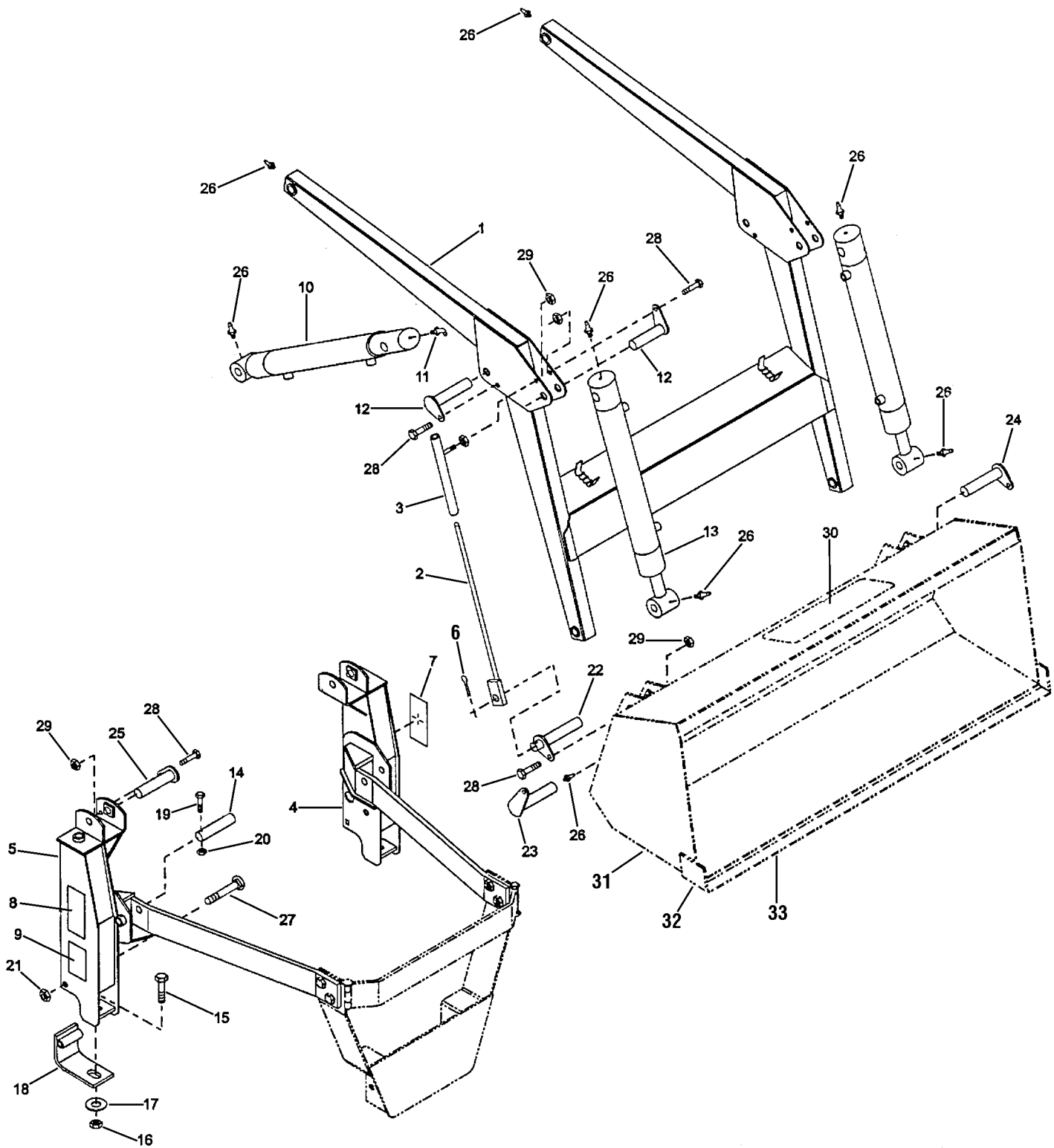
Rev. 3/2001

TP-400-2466-01-AT-SMA

Loader, Front End - Main Frame

985351

NOTE: Unless noted otherwise,
use the standard hardware torque
specification chart.



The above parts group applies to the following Mfg. Nos.:

1692932 Loader, Front End

Loader, Front End - Main Frame

REF NO.	PART NO.	QTY.	DESCRIPTION
1	1718163	1	BOOM
2	1700531	1	ROD, Indicator
3	1700525	1	GUIDE TUBE, Indicator Rod
4	1718161	1	SIDE FRAME, Left
5	1718162	1	SIDE FRAME, Right
6	1918454	1	PIN, Cotter, 5/32 x 1-1/2
7	1700559	1	DECAL, Warning
8	1700557	1	DECAL, Warning
9	1700558	1	DECAL, Caution
10	1718166	2	CYLINDER, Lift (See SERVICE PARTS - Lift Cylinder)
11	915019	2	FITTING, Grease
12	1700524	4	PIN, Cylinder Base, 3/4 x 2-1/2
13	1718169	2	CYLINDER, Bucket (See SERVICE PARTS - Bucket Cylinder)
14	1718170	2	PIN, 3/4 x 4
15	1921024	2	CAPSCREW, Hex Head, 1/2-13 x 2
16	1922134	2	LOCKNUT, Hex, 1/2-13
17	1960170	2	WASHER, 1/2
18	1718174	2	HINGE
19	1921961	2	CAPSCREW, Hex Head, 1/4-20 x 1-1/4
20	1923358	2	LOCKNUT, Hex, 1/4-20
21	1923353	2	LOCKNUT, Hex, 5/8-11
22	1700532	1	PIN, 3/4 x 3-1/4
23	1700533	2	PIN, 3/4 x 3-1/4
24	1700534	1	PIN, 3/4 x 3-1/4
25	1921024	2	CAPSCREW, Hex Head, 1/2-13 x 2
26	912808	10	FITTING, Grease, 1/4-28
27	960300	2	CARRIAGE BOLT, 5/8-11 x 3-1/2
28	960323	10	SHOULDER BOLT, 3/8-16 x 1
29	1930651	12	LOCKNUT, Hex, 3/8-16
30	1700549	1	DECAL, Caution
31	*	1	BUCKET ASSEMBLY, 48"
32	1700546	2	CUTTING EDGE, Side (Weld on part)
33	1700548	1	CUTTING EDGE, Bottom, 48" (Weld on part)

Footnotes:

* Order Ref. 31 (Bucket) as whole goods item 1691311.

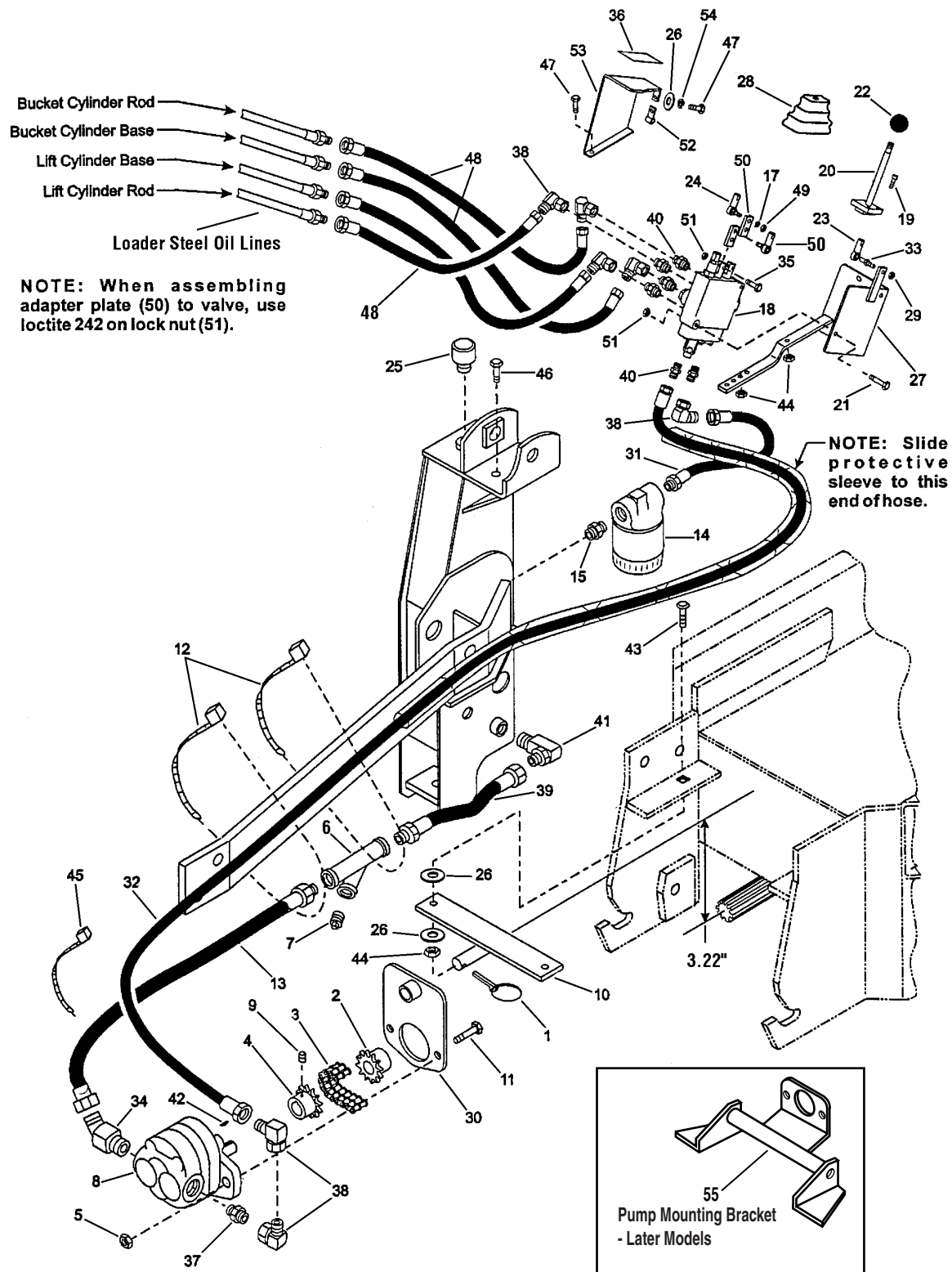
The above parts group applies to the following Mfg. Nos.:

1692932 Loader, Front End

Loader, Front End - Main Frame

985351

NOTE: Unless noted otherwise,
use the standard hardware torque
specification chart.



The above parts group applies to the following Mfg. Nos.:

1692932 Loader, Front End

Loader, Front End - Main Frame

REF NO.	PART NO.	QTY.	DESCRIPTION
1	1709189	1	PIN, Klik, 3/16 x 1-5/8
2	1700484	1	SPROCKET, w/ Spline Hub
3	1700485	1	CHAIN, Roller, #40-2 x 12 Pitches
4	1700486	1	SPROCKET, w/ Keyway Hub
5	1930651	2	LOCKNUT, Hex, 3/8-16
6	1700490	1	Y-STRAINER
7	1673452	1	PLUG, Pipe, 3/8 NPT
8	1700493	1	PUMP ASSEMBLY (See SERVICE PARTS - Hydraulic Gear Pump)
9	1930545	1	SETSCREW, Socket Head, 1/4-20 x 1/4, G8
10	1718180	1	BRACKET, Pin Assembly
11	1920415	2	CAPSCREW, Hex Head, 3/8-16 x 1-1/4
12	1701011	2	TIE, Self-Locking
13	1718456	1	TUBE, 1/2 x 28, Suction
14	1700500	1	FILTER ASSEMBLY
15	1700499	1	FITTING, Adapter, 3/8 x 3/8
16	1916622	2	NUT, Hex, 1/4-20
17	1916964	2	LOCKWASHER, 1/4
18	1700502	1	VALVE ASSEMBLY(See SERVICE PARTS - Hydraulic Valve Assembly)
19	1960503	3	CAPSCREW, Hex Socket Head, 1/4-28 x 3/4
20	1718461	1	HANDLE
21	1921963	2	CAPSCREW, Hex Head, 1/4-20 x 2
22	8021050	1	BALL
23	1718459	1	BALL JOINT, Female
24	1718460	2	BALL JOINT, Male
25	1700509	1	CAP, Breather
26	1919326	5	WASHER, 5/16
27	1718185	1	BRACKET, Valve Mounting
28	1718462	1	BOOT
29	1960262	1	NUT, Hex, 1/4-28
30	1718187	1	BRACKET, Pump Mounting
31	1718463	1	HOSE, Hydraulic, 3/8 x 11 (valve to filter)
32	1718464	1	HOSE, Hydraulic, 3/8 x 63 (pressure)
33	1718465	1	STUD, Ball Joint
34	1718466	1	FITTING, 7/8 O-Ring x 7/8 JIC, 45 Degree (outlet port on pump)
35	1923341	2	CAPSCREW, Hex Head, 1/4-20 x 3/4
36	1718467	1	DECAL, Single Handle
37	1718194	1	FITTING, 3/4 O-Ring x 9/16 JIC
38	1718195	7	FITTING, 9/16 JIC x 9/16 JIC, 90 Degree (between outlet fitting pump & hose)
39	1718468	1	HOSE, Hydraulic, 1/2 x 16
40	922522	6	FITTING, 9/16 O-Ring x 9/16 JIC
41	1718470	1	FITTING 3/4 JIC x 1/2 NPTF, 90 Degree
42	*	1	WOODRUFF KEY, 1/8 x 5/8
43	1931335	2	CARRIAGE BOLT, 5/16-18 x 1
44	1923362	5	LOCKNUT, Hex, 5/16-18

Footnotes:

* Comes With Pump

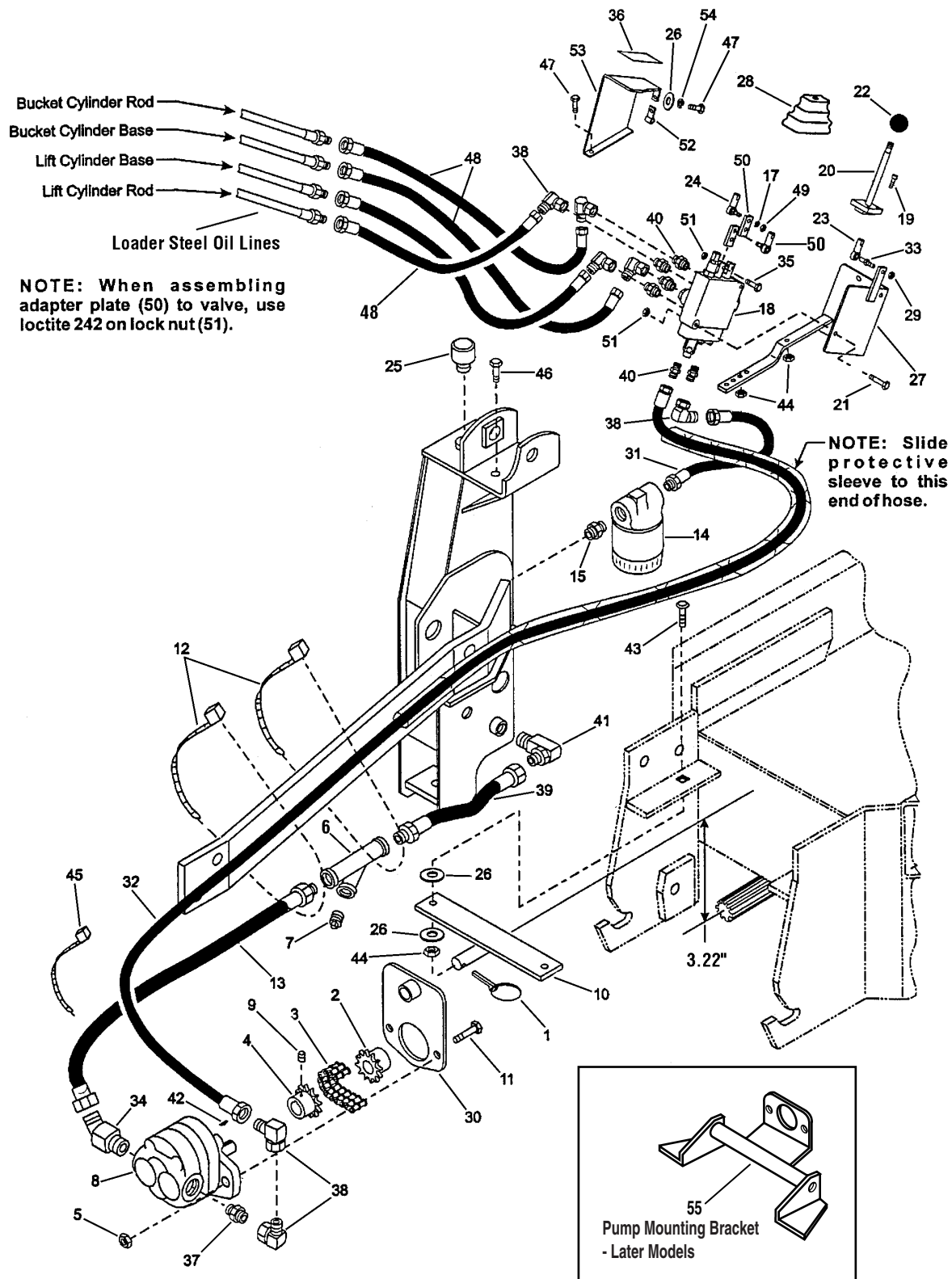
The above parts group applies to the following Mfg. Nos.:

1692932 Loader, Front End

Loader, Front End - Main Frame

985351

NOTE: Unless noted otherwise,
use the standard hardware torque
specification chart.



The above parts group applies to the following Mfg. Nos.:

1692932 Loader, Front End

Loader, Front End - Main Frame

REF NO.	PART NO.	QTY.	DESCRIPTION
45	1701011	3	TIE, Self Locking
46	1921977	2	CAPSCREW, Hex Head, 5/16-18 x 1-1/4
47	1921333	2	CAPSCREW, Hex Head, 5/16-18 X 1
48	1718471	4	HOSE, Hydraulic, 3/8 x 24
49	1960262	2	NUT, Hex, 1/4-28
50	1718472	2	ADAPTER PLATE
51	1923358	4	LOCKNUT, Hex, 1/4-20
52	1718873	1	SPEEDNUT
53	1718474	1	COVER
54	1917356	1	LOCKWASHER, Lock, 5/16
55	1719120	1	BRACKET, Pump Mounting (Replaces Ref. Nos. 1, 10, 26, 30, 43, & 44) in Later Models

Footnotes:

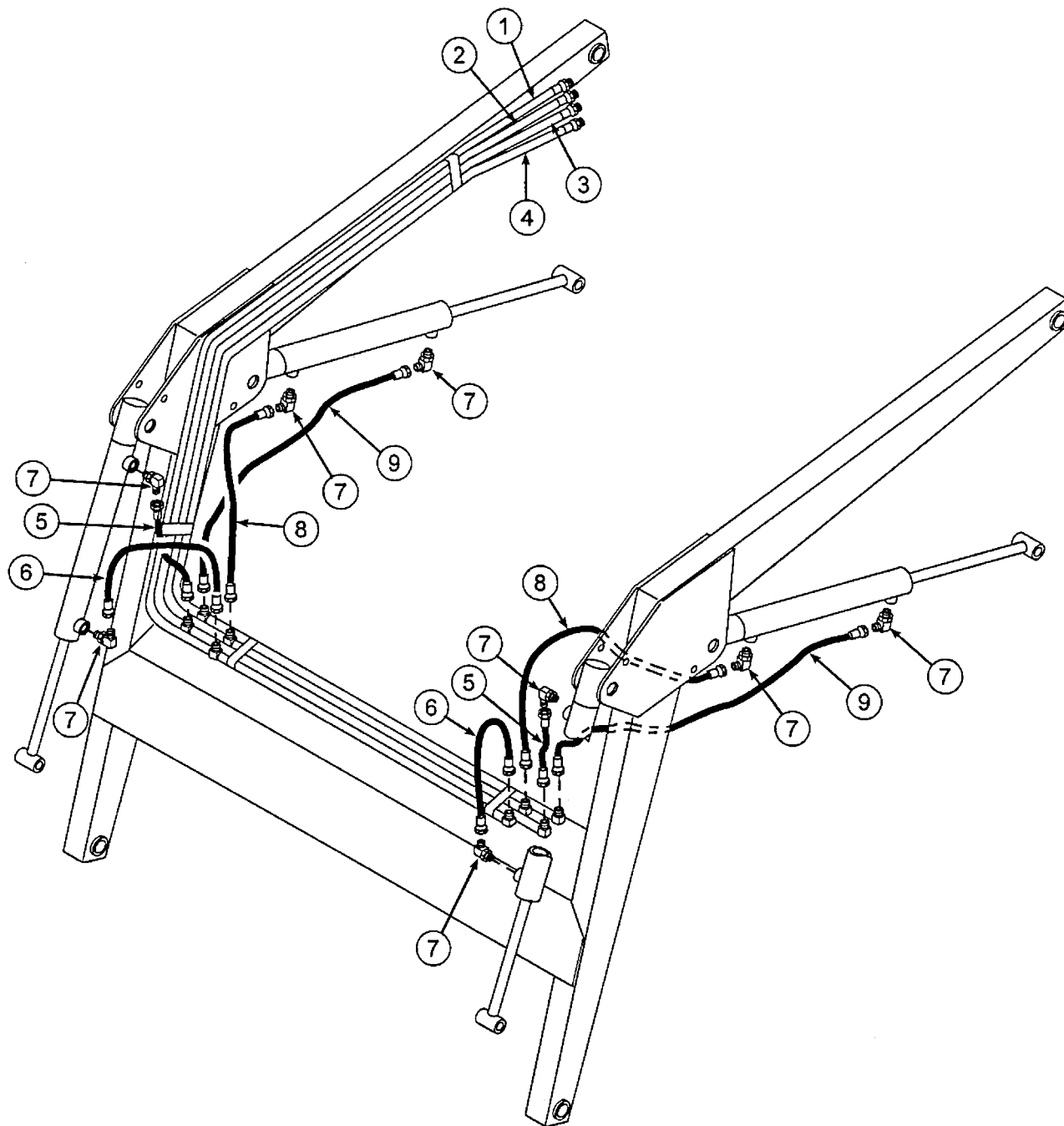
The above parts group applies to the following Mfg. Nos.:

1692932 Loader, Front End

Loader, Front End - Boom Hydraulics

985350

NOTE: Unless noted otherwise,
use the standard hardware torque
specification chart.



The above parts group applies to the following Mfg. Nos.:

1692932 Loader, Front End

Loader, Front End - Boom Hydraulics

REF NO.	PART NO.	QTY.	DESCRIPTION
1	1718450	1	TUBE, Oil Line, (BCB)
2	1718451	1	TUBE, Oil Line, (BCR)
3	1718452	1	TUBE, Oil Line, (LCB)
4	1718453	1	TUBE, Oil Line, (LCB)
5	1700518	2	HOSE, 1/4 x 10-1/2
6	1700519	2	HOSE, 1/4 x 15
7	922523	8	FITTING, Elbow, 9/16 x 9/16, 90 Degree
8	1700508	2	HOSE, 1/4 x 20
9	1718455	2	HOSE, 1/4 x 34

Footnotes:

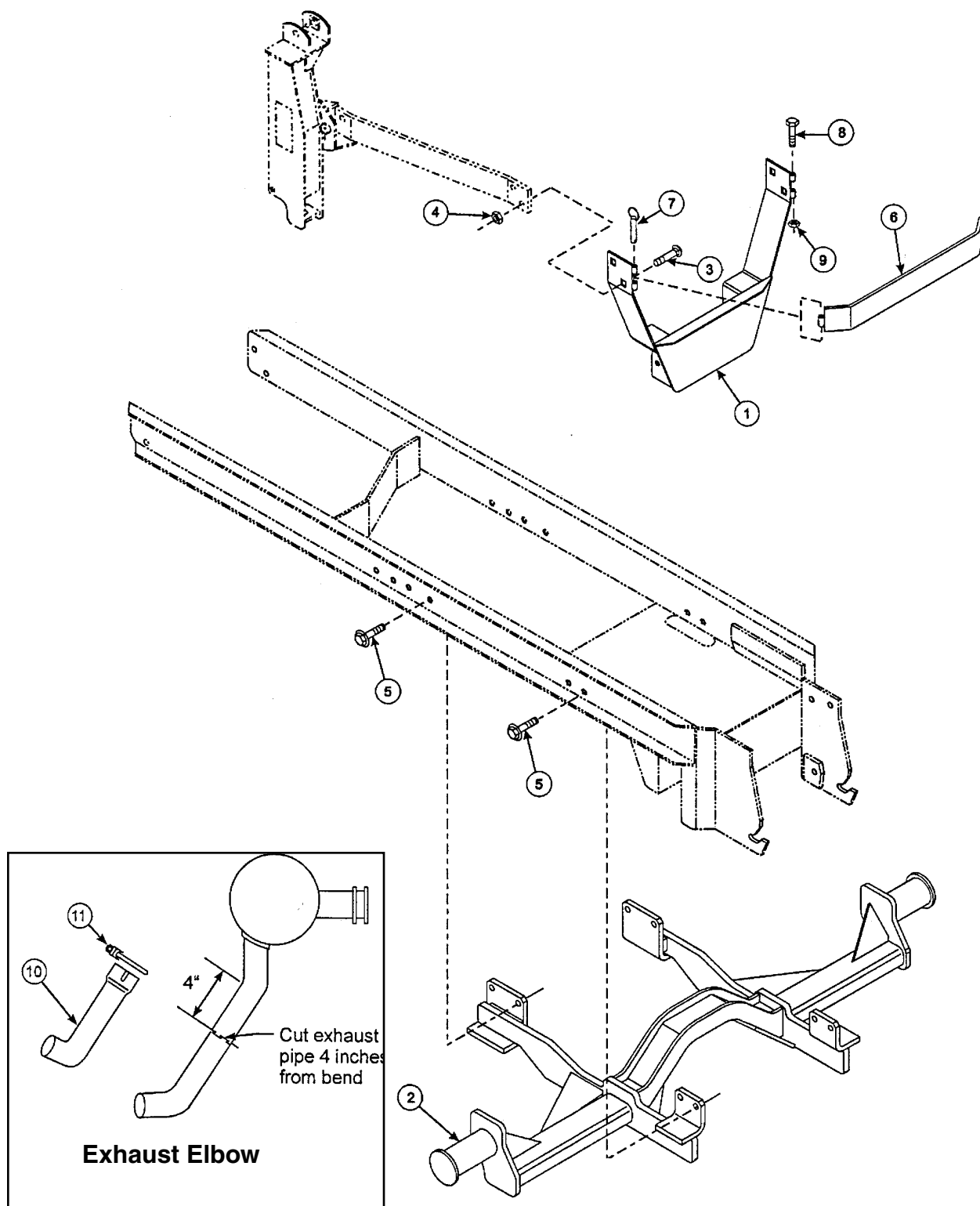
The above parts group applies to the following Mfg. Nos.:

1692932 Loader, Front End

Loader, Front End - Mid Hitch Group

NOTE: Unless noted otherwise,
use the standard hardware torque
specification chart.

985351



The above parts group applies to the following Mfg. Nos.:

1692932 Loader, Front End

Loader, Front End - Mid Hitch Group

REF NO.	PART NO.	QTY.	DESCRIPTION
1	1718154	1	BRACKET, Front Mounting
2	1718155	1	BRACKET, Mid Mounting
3	1960489	4	CARRIAGE BOLT, 1/2-13 x 1-1/2
4	1922134	4	LOCKNUT, 1/2-13
5	1933260	8	CAPSCREW, Hex Flange Head, Whiz Lock, 3/8-16 x 3/4
6	1718158	1	BUMPER
7	1718159	1	PIN, Locking, 3/8-16 x 4
8	1922648	1	CAPSCREW, Hex Head, 3/8-16 x 4
9	1930651	1	LOCKNUT, Hex, 3/8-16
10	1708761	1	ELBOW, Exhaust
11	1712286	1	CLAMP, Exhaust

Footnotes:

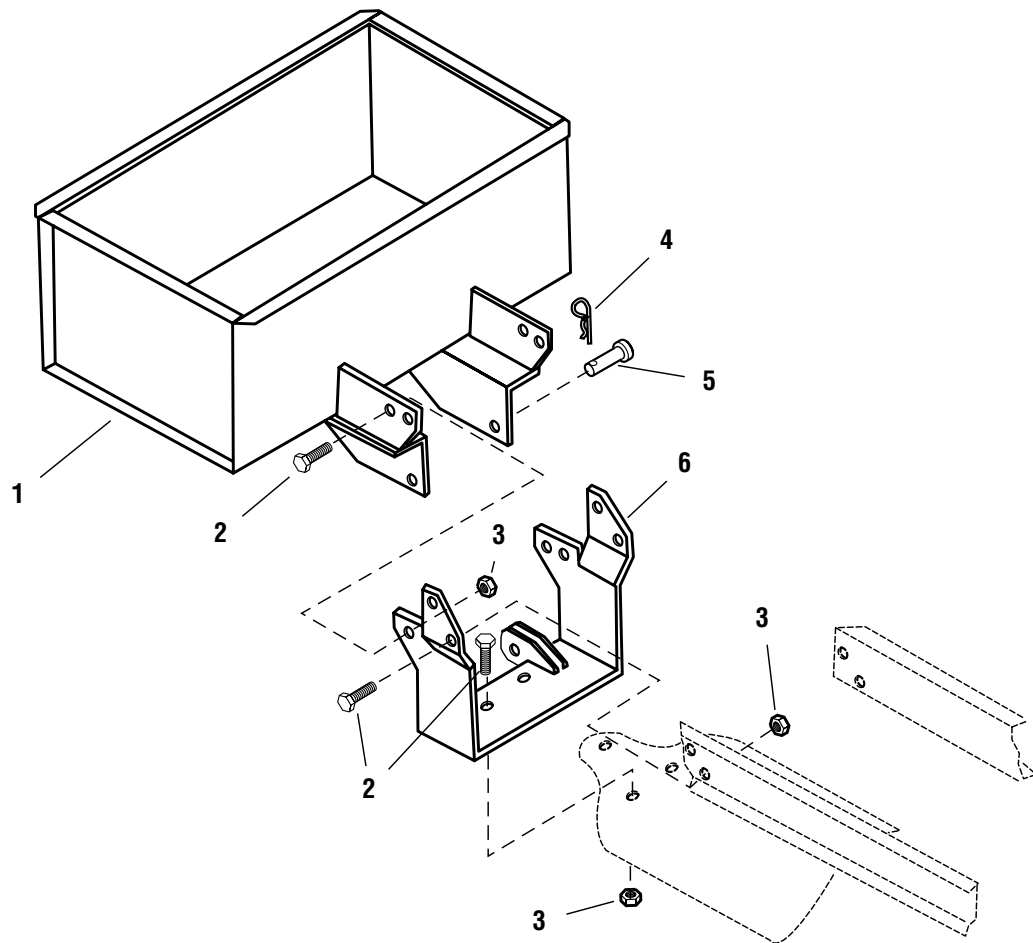
The above parts group applies to the following Mfg. Nos.:

1692932 Loader, Front End

Loader, Front End - Ballast Box

NOTE: Unless noted otherwise,
use the standard hardware torque
specification chart.

985456



The above parts group applies to the following Mfg. Nos.:

1692932 Loader, Front End

Loader, Front End - Ballast Box

REF NO.	PART NO.	QTY.	DESCRIPTION
1	1700550	1	BALLAST BOX
2	1921176	10	CAPSCREW, Hex Head, 1/2-13 x 1-1/4
3	1922134	10	LOCKNUT, 1/2-13
4	1960033	2	CLIP, Hairpin
5	1960116	2	PIN, Clevis
6	1718202	1	BRACKET, Mounting

Footnotes:

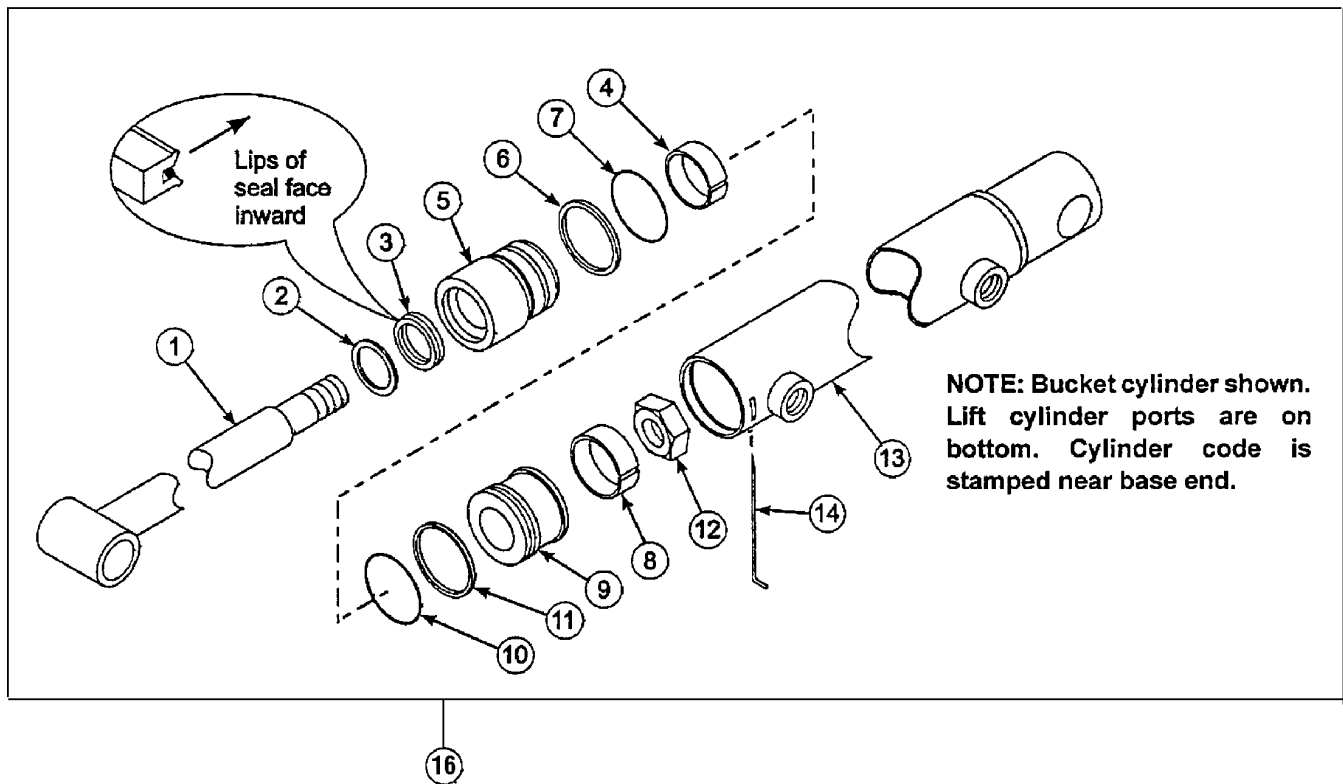
The above parts group applies to the following Mfg. Nos.:

1692932 Loader, Front End

SERVICE PARTS - Bucket Cylinder

NOTE: Unless noted otherwise,
use the standard hardware torque
specification chart.

985351_1718169



The above parts group applies to the following Mfg. Nos.:

1692932 Loader, Front End

SERVICE PARTS - Bucket Cylinder

REF NO.	PART NO.	QTY.	DESCRIPTION
1	1718164	1	ROD, Cylinder, 1"
2	*	1	SEAL, Wiper, (See Ref. No. 15)
3	*	1	SEAL, U-Cup, (See Ref. No. 15)
4	*	1	WEAR RING, (See Ref. No. 15)
5	1718165	1	HEAD, Cylinder
6	*	1	BACKUP WASHER, (See Ref. No. 15)
7	*	1	"O"-RING, (See Ref. No. 15)
8	*	1	WEAR RING, (See Ref. No. 15)
9	1718203	1	PISTON
10	*	1	"O"-RING, (See Ref. No. 15)
11	*	1	SEAL, Piston, (See Ref. No. 15)
12	1926662	1	NUT, Hex Lock, 3/4-10
13	1718204	1	TUBE, Cylinder
14	*	1	WIRE, Retaining, (See Ref. No. 15)
15	1718205	1	REPAIR KIT, (Contains Ref. Nos. 2-4, 6-8, 10, 11 & 14)
16	1718169	1	CYLINDER BUCKET, Complete

Footnotes:

* Not serviced separately.

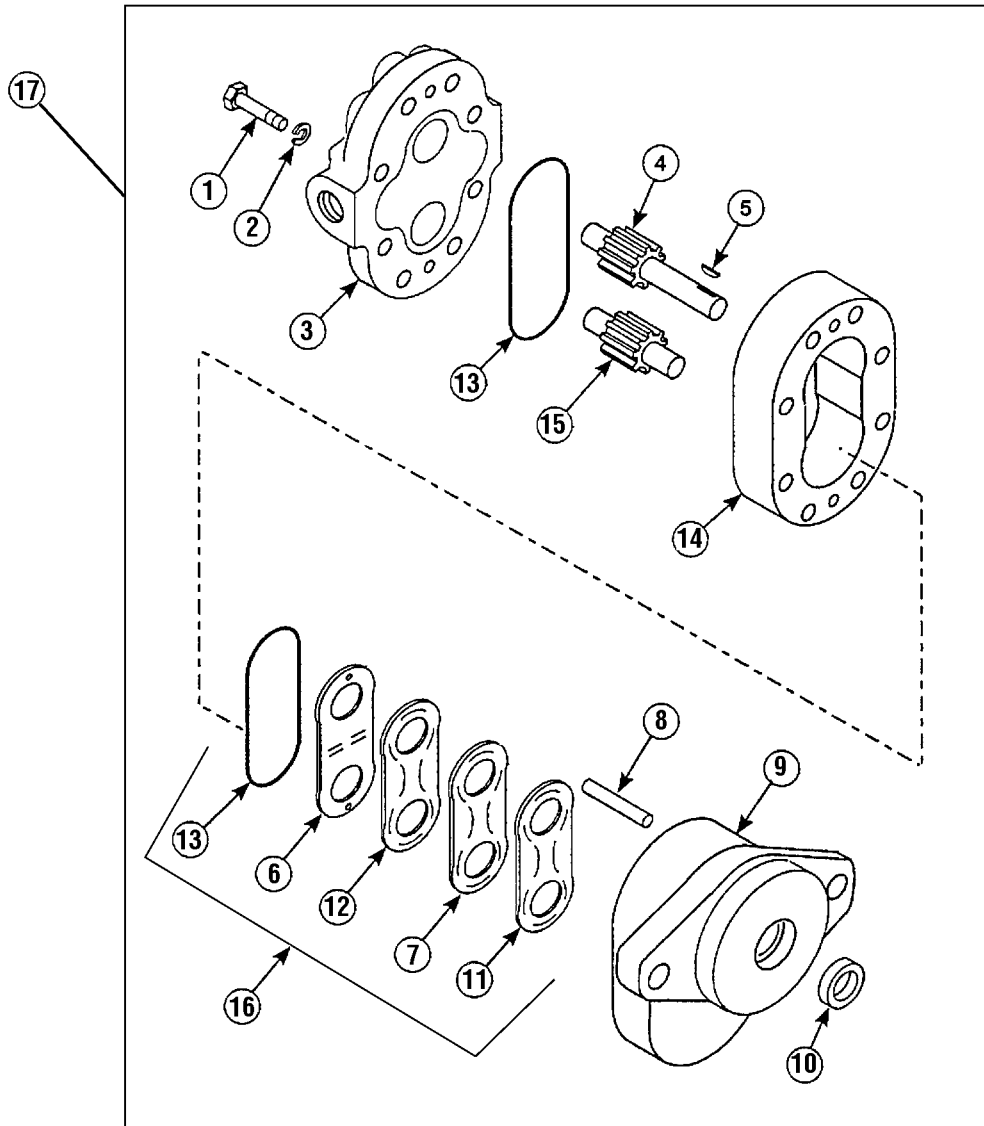
The above parts group applies to the following Mfg. Nos.:

1692932 Loader, Front End

SERVICE PARTS - Hydraulic Gear Pump

985350_1700493

NOTE: Unless noted otherwise,
use the standard hardware torque
specification chart.



The above parts group applies to the following Mfg. Nos.:

1692932 Loader, Front End

SERVICE PARTS - Hydraulic Gear Pump

REF NO.	PART NO.	QTY.	DESCRIPTION
1	*	8	CAPSCREW, (See Ref. No. 17)
2	*	8	LOCKWASHER, (See Ref. No. 17)
3	*	1	COVER, Rear, (See Ref. No. 17)
4	*	1	GEAR, Drive, (See Ref. No. 17)
5	*	1	WOODRUFF KEY, (See Ref. No. 17)
6	*	1	WEAR PLATE, (See Ref. No. 16)
7	*	1	PAPER GASKET, (See Ref. No. 16)
8	*	2	ROD, Alignment, (See Ref. No. 17)
9	*	1	COVER, Front, (See Ref. No. 17)
10	*	1	SEAL, Rotary, (See Ref. No. 16)
11	*	1	SEAL, Rubber V, (See Ref. No. 16)
12	*	1	HEAT SHIELD, Phenolic, (See Ref. No. 16)
13	*	2	"O"-RING, (See Ref. No. 16)
14	*	1	CENTER SECTION, (See Ref. No. 17)
15	*	1	GEAR, Driven, (See Ref. No. 17)
16	1700544	1	SEAL KIT, (Contains Ref. Nos. 6, 7, 10, 11, 12, & 13)
17	1700493	1	GEAR PUMP ASSEMBLY, Complete

Footnotes:

* Not serviced separately.

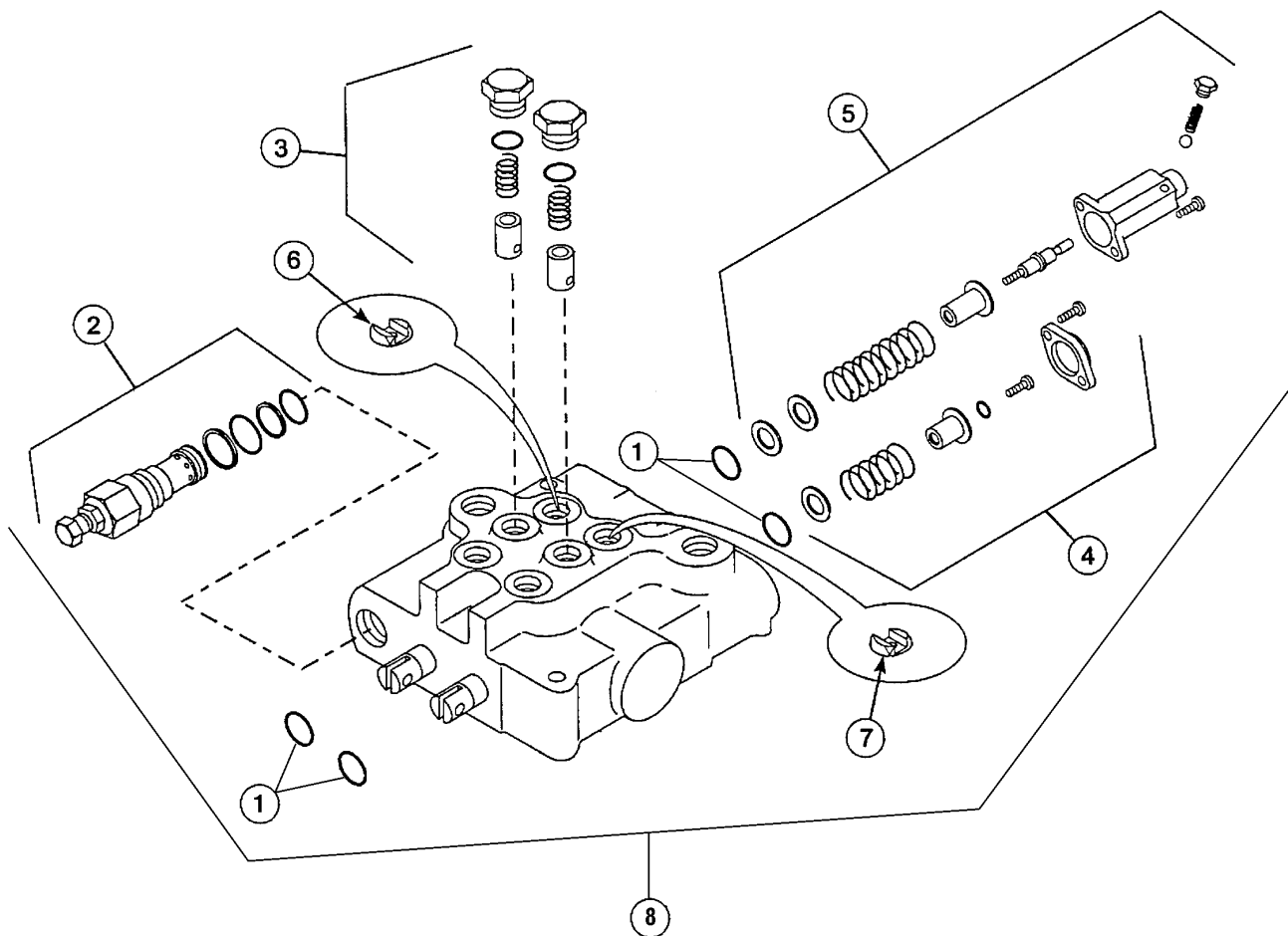
The above parts group applies to the following Mfg. Nos.:

1692932 Loader, Front End

SERVICE PARTS - Hydraulic Valve Assembly

NOTE: Unless noted otherwise,
use the standard hardware torque
specification chart.

985350_1718166



The above parts group applies to the following Mfg. Nos.:

1692932 Loader, Front End

SERVICE PARTS - Hydraulic Valve Assembly

REF NO.	PART NO.	QTY.	DESCRIPTION
1	1700495	1	KIT, Seal Repair
2	1704148	1	KIT, Pilot Relief Valve
3	1700545	1	KIT, Load Check
4	1700642	1	KIT, Spring Centering
5	1700641	1	KIT, Detent Spring Centering
6	1700837	1	RESTRICTOR PLATE, One-Way, .109
7	1700838	1	RESTRICTOR PLATE, Two-Way, .062
8	1700502	1	HYDRAULIC VALVE ASSEMBLY

Footnotes:

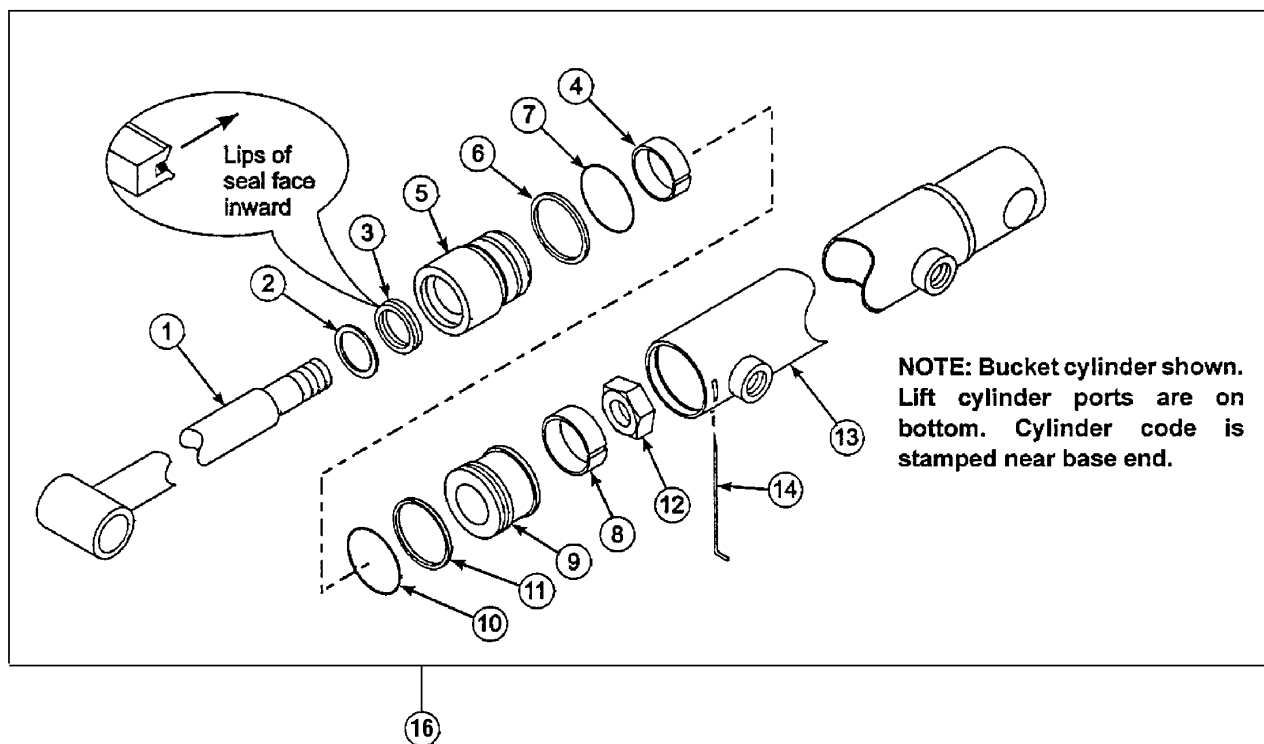
The above parts group applies to the following Mfg. Nos.:

1692932 Loader, Front End

SERVICE PARTS - Lift Cylinder

985351_1718166

NOTE: Unless noted otherwise,
use the standard hardware torque
specification chart.



The above parts group applies to the following Mfg. Nos.:

1692932 Loader, Front End

SERVICE PARTS - Lift Cylinder

REF NO.	PART NO.	QTY.	DESCRIPTION
1	1718167	1	ROD, Cylinder, 1"
2	*	1	SEAL, Wiper, (See Ref. No. 15)
3	*	1	SEAL, U-Cup, (See Ref. No. 15)
4	*	1	WEAR RING, (See Ref. No. 15)
5	1718165	1	HEAD, Cylinder
6	*	1	BACKUP WASHER, (See Ref. No. 15)
7	*	1	"O"-RING, (See Ref. No. 15)
8	*	1	WEAR RING, (See Ref. No. 15)
9	1718203	1	PISTON
10	*	1	"O"-RING, (See Ref. No. 15)
11	*	1	SEAL, Piston, (See Ref. No. 15)
12	1926662	1	NUT, Hex Lock, 3/4-10
13	1718168	1	TUBE, Cylinder
14	*	1	WIRE, Retaining, (See Ref. No. 15)
15	1718205	1	REPAIR KIT, (Contains Ref. Nos. 2-4, 6-8, 10, 11 & 14)
16	1718166	1	CYLINDER LIFT, Complete

Footnotes:

* Not serviced separately.

The above parts group applies to the following Mfg. Nos.:

1692932 Loader, Front End

Hardware Identification & Torque Specifications

Common Hardware Types

Hex Head Capscrew



Washer



Carriage Bolt



Lockwasher



Hex Nut

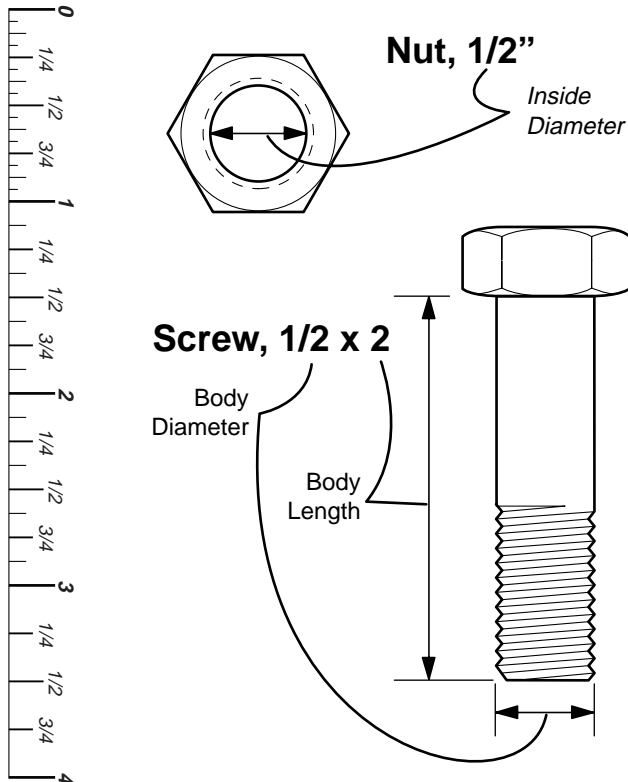


Standard Hardware Sizing

When a washer or nut is identified as **1/2"**, this is the *Nominal size*, meaning the *inside diameter* is 1/2 inch; if a second number is present it represents the *threads per inch*

When bolt or capscrew is identified as **1/2 - 16 x 2"**, this means the *Nominal size*, or *body diameter* is 1/2 inch; the second number represents the *threads per inch* (16 in this example, and the final number is the *body length* of the bolt or screw (in this example 2 inches long).

The guides and ruler furnished below are designed to help you select the appropriate hardware and tools.



Torque Specification Chart

FOR STANDARD MACHINE HARDWARE (Tolerance $\pm 20\%$)

Hardware Grade	No Marks SAE Grade 2		SAE Grade 5		SAE Grade 8	
	in/lbs ft/lbs	Nm.	in/lbs ft/lbs	Nm.	in/lbs ft/lbs	Nm.
8-32	19	2.1	30	3.4	41	4.6
8-36	20	2.3	31	3.5	43	4.9
10-24	27	3.1	43	4.9	60	6.8
10-32	31	3.5	49	5.5	68	7.7
1/4-20	66	7.6	8	10.9	12	16.3
1/4-28	76	8.6	10	13.6	14	19.0
5/16-18	11	15.0	17	23.1	25	34.0
5/16-24	12	16.3	19	25.8	27	34.0
3/8-16	20	27.2	30	40.8	45	61.2
3/8-24	23	31.3	35	47.6	50	68.0
7/16-14	30	40.8	50	68.0	70	95.2
7/16-20	35	47.6	55	74.8	80	108.8
1/2-13	50	68.0	75	102.0	110	149.6
1/2-20	55	74.8	90	122.4	120	163.2
9/16-12	65	88.4	110	149.6	150	204.0
9/16-18	75	102.0	120	163.2	170	231.2
5/8-11	90	122.4	150	204.0	220	299.2
5/8-18	100	136	180	244.8	240	326.4
3/4-10	160	217.6	260	353.6	386	525.0
3/4-16	180	244.8	300	408.0	420	571.2
7/8-9	140	190.4	400	544.0	600	816.0
7/8-14	155	210.8	440	598.4	660	897.6
1-8	220	299.2	580	788.8	900	1,244.0
1-12	240	326.4	640	870.4	1,000	1,360.0

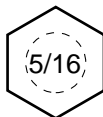
NOTES

- These torque values are to be used for all hardware excluding: locknuts, self-tapping screws, thread forming screws, sheet metal screws and socket head setscrews.
- Recommended seating torque values for locknuts:
 - for prevailing torque locknuts - use 65% of grade 5 torques.
 - for flange whizlock nuts and screws - use 135% of grade 5 torques.
- Unless otherwise noted on assembly drawings, all torque values must meet this specification.

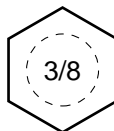
Wrench & Fastener Size Guide



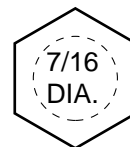
1/4" Bolt or Nut
Wrench—7/16"



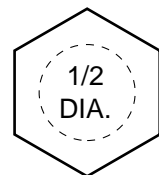
5/16" Bolt or Nut
Wrench—1/2"



3/8" Bolt or Nut
Wrench—9/16"



7/16" Bolt or Nut
Wrench (Bolt)—5/8"
Wrench (Nut)—11/16"



1/2" Bolt or Nut
Wrench—3/4"