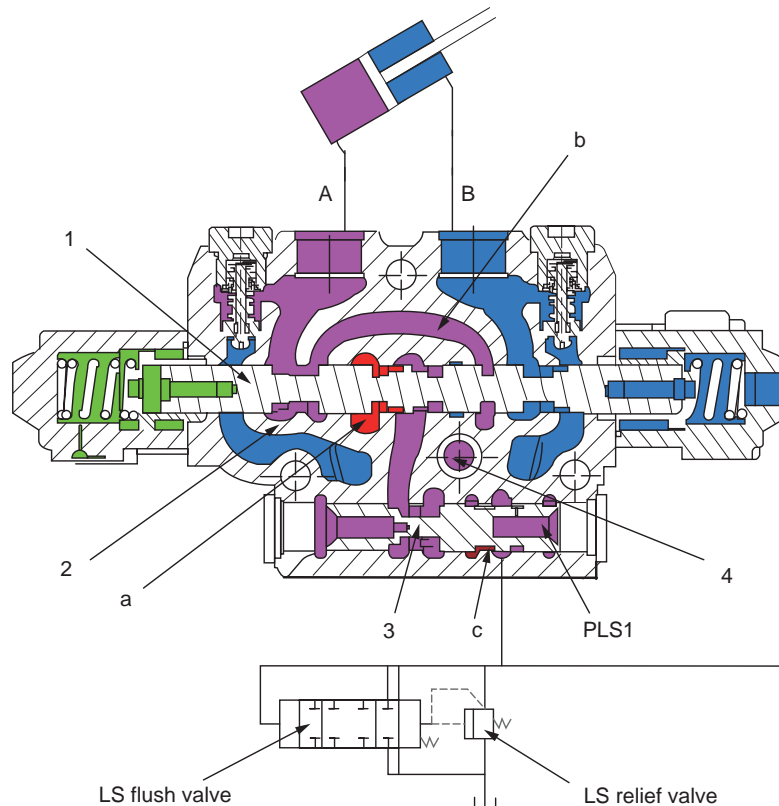


2. LS pressure introduction

Function

- LS pressure is the load pressure of the actuator at the outlet port of the control valve.
- It reduces the pump pressure PP acted upon the pressure compensation valve until it equals to the acting pressure A via the control valve and directs it to LS circuit PLS.



ZX75-1002034

Fig. 4-33

Working process

Main control valve (Boom, arm, bucket and swing)

- When spool (1) is acting, pump pressure PP enters the pressure compensator via control valve (2) and notch (a) inside valve spool. Then, it enters actuator circuit A via check valve and bridge passage (b).
- At the same time, pressure compensator (3) also moves to the right (→). The pump pressure PP enters notch (c) of the pressure compensator and then the LS circuit. Pressure PP enters LS circuit PLS and then chamber PLS1.
- At this time, LS circuit PLS is connected to the tank circuit T from LS flushing valve.