

## WATER PUMP

### Removal

1. Remove the radiator assembly. See "Radiator Removal" discussed previously in this section.
2. Loosen the alternator mounting bolts, 1, and adjusting bracket and remove the drive belt, 2.

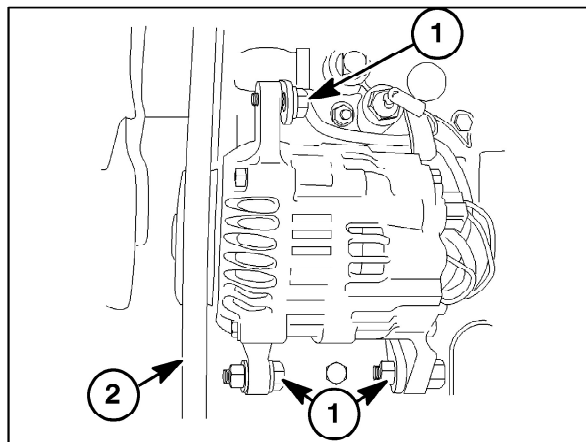


Figure 1-132

3. Remove the attaching bolts, 4, cooling fan, 1, fan holder, 2, and pulley, 3.

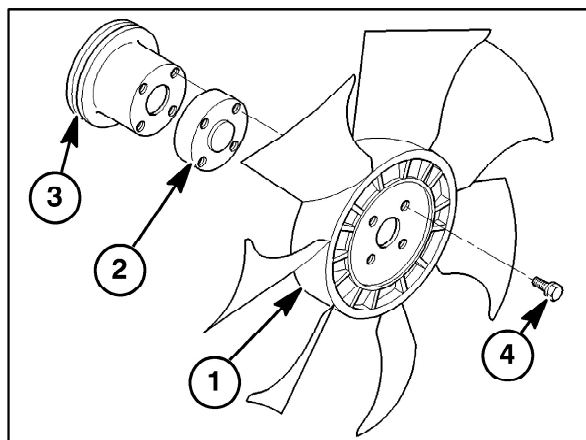


Figure 1-133

4. Remove the bypass hose, 1, and lower radiator hose, 2, from the water pump, 3.
5. Remove the water pump retaining bolts, 8, and remove the water pump, 3, and gasket, 5, from engine.
6. Remove the water pump mounting plate, 4, and gasket, 6.

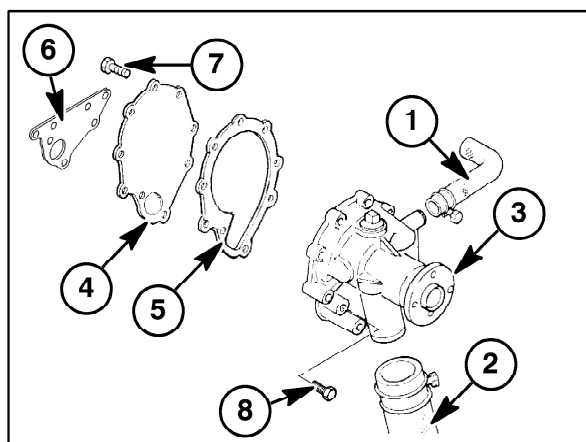


Figure 1-134

- |                        |                                     |
|------------------------|-------------------------------------|
| 1. Bypass Hose         | 6. Gasket, Mounting Plate           |
| 2. Lower Radiator Hose | 7. Retaining Bolt, (Mounting Plate) |
| 3. Water Pump          | 8. Water Pump Retaining Bolt        |
| 4. Mounting Plate      |                                     |
| 5. Gasket              |                                     |

### Inspection and Repair

Inspect the water pump for indications of coolant leakage from around the pump shaft. If coolant leakage is evident, or if the water pump is noisy when running, replace the water pump.

### Installation

1. Install the water pump mounting plate, 4, and new gasket, 5.
2. Install the water pump, 3, and new gasket, 6, and tighten the retaining bolts, 7 and 8.
3. Install the bypass hose, 1, and lower radiator hose, 2, on the water pump and tighten the hose clamps.
4. Install the pulley, 3, fan holder, 2, and cooling fan, 1, and tighten the attaching bolts.

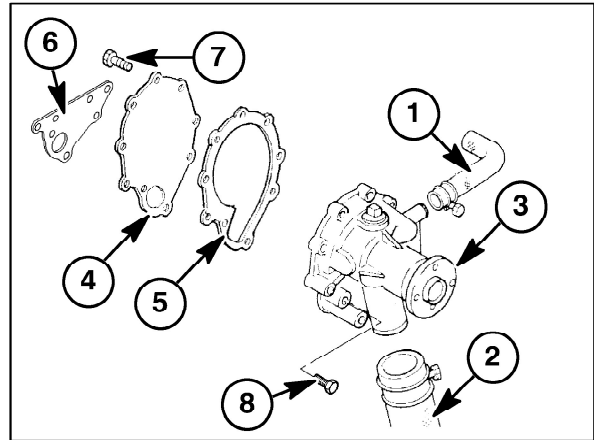


Figure 1-135

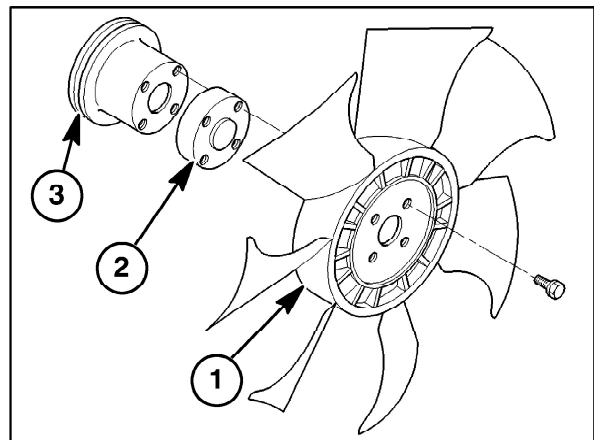


Figure 1-136

5. Install the drive pulley and adjust the alternator drive belt tension to obtain a deflection, 1, of 10 - 15 mm (0.393 - 0.591") when 9 - 11 kg (20 - 25 lbs) is applied between the pulleys and tighten the alternator mounting bolts.
6. Install the radiator assembly. See "Radiator Installation" discussed earlier in this section.

