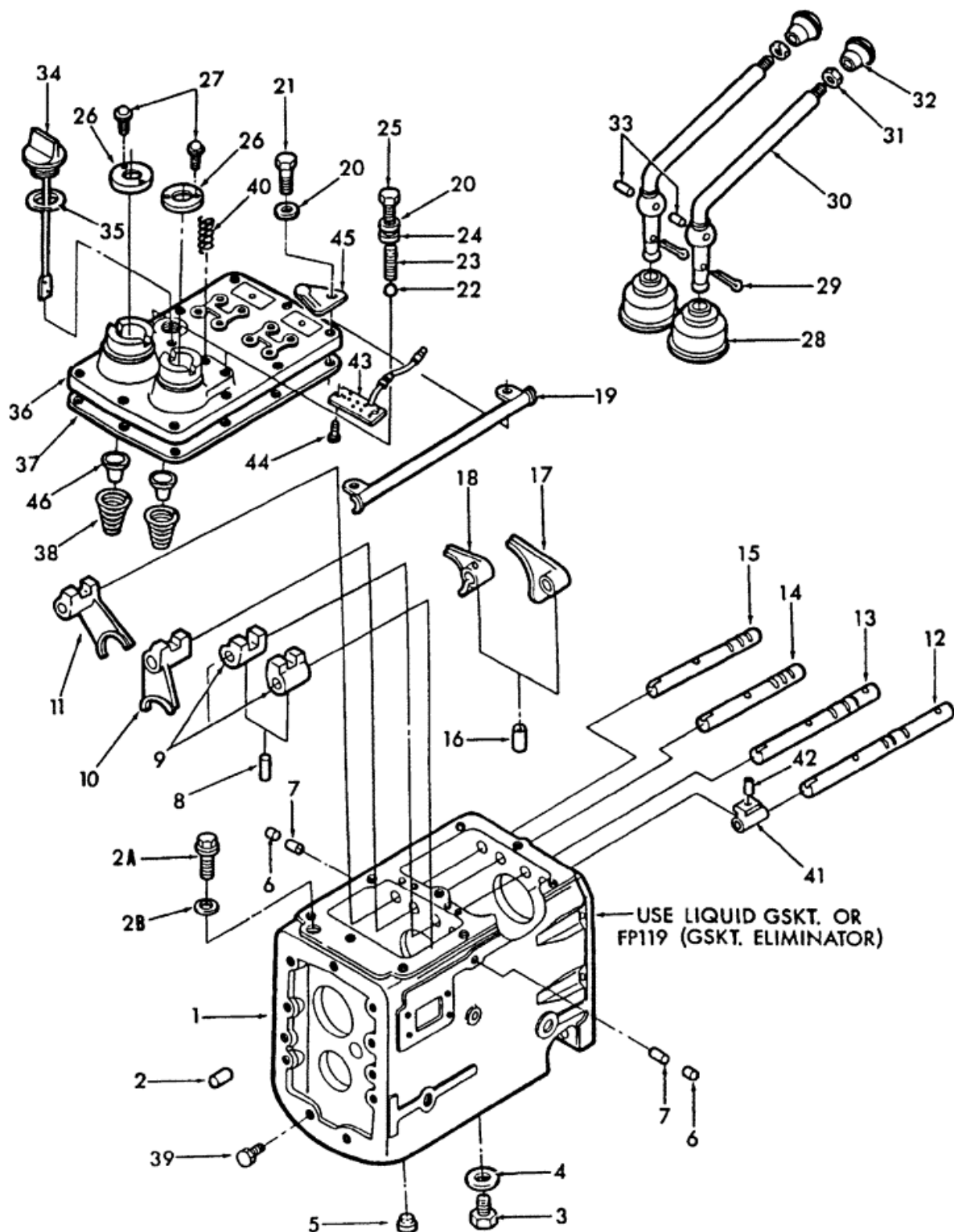


(1910) - 3 CYL COMPACT TRACTOR (1/83-12/86) > (07D03) - TRANSMISSION CASE





PARTS & MERCHANDISE
STORE

New Holland Agriculture 621 State Street
NA Customer Relations@newholland.com Racine, Wisconsin 53404
866-639-4563 option 1

(1910) - 3 CYL COMPACT TRACTOR (1/83-12/86) > (07D03) - TRANSMISSION CASE

Diag #	Part #	Name	Description	Qty
1	SBA322012060	CASING	Assy., Includes: Ref. 2, Years: 01-JAN-83-31-JAN-85	1
		No Longer Serviced - use SBA-322012061	No Longer Serviced - use SBA-322012061	1
1	SBA322012061	CASE	Casing Assy., Includes: Ref. 2, Start Year: 01-FEB-85	1
		U.S. - Used on & ASN UP05155, NH-E - Used on & ASN UPE00335	U.S. - Used on & ASN UP05155, NH-E - Used on & ASN UPE00335	1
2	SBA030501025	BALL STUD,M10 x 25 L	DOWEL, , Pin M10 x 25 L, Start Year: 01-JAN-83	2
2A	SBA064609003	PLUG	, Start Year: 01-FEB-85	1
		This Plug & Gasket is not included W/SBA-322012060, Case Assy.	This Plug & Gasket is not included W/SBA-322012060, Case Assy.	1
		U.S. - Used on & ASN UP05155, NH-E - Used on & ASN UPE00335	U.S. - Used on & ASN UP05155, NH-E - Used on & ASN UPE00335	1
2B	SBA054109038	GASKET	, Start Year: 01-FEB-85	1
		This Plug & Gasket is not included W/SBA-322012060, Case Assy.	This Plug & Gasket is not included W/SBA-322012060, Case Assy.	1
		U.S. - Used on & ASN UP05155, NH-E - Used on & ASN UPE00335	U.S. - Used on & ASN UP05155, NH-E - Used on & ASN UPE00335	1
3	SBA064600016	PLUG	M16, Start Year: 01-JAN-83	1
4	SBA025100016	WASHER	#16, Start Year: 01-JAN-83	1
5	SBA398460010	PLUG,M19	, Start Year: 01-JAN-83	4
6	SBA398460030	PLUG	, Start Year: 01-JAN-83	2
7	SBA324560040	PIN	, Start Year: 01-JAN-83	2
8	300869	LOCK PIN,M6 x 40, Slotted	Pin, M6 x 40, Slotted, Start Year: 01-JAN-83	4
9	SBA324320130	STOP	Boss, Start Year: 01-JAN-83	2
10	SBA324410351	SHIFT, FORK	Fork, Start Year: 01-JAN-83	1
11	SBA324410321	SHIFT, FORK	Fork, Start Year: 01-JAN-83	1
12	SBA324311280	ROD	Double Detent Springs Go On Both Range Rails Located on LH Side Of Transmission, Start Year: 01-JAN-83	1
13	SBA324311290	ROD	Double Detent Springs Go On Both Range Rails Located on LH Side of Transmission, Start Year: 01-JAN-83	1

Diag #	Part #	Name	Description	Qty
14	SBA324311240	ROD	, Start Year: 01-JAN-83	1
15	SBA324311250	ROD	, Start Year: 01-JAN-83	1
16	SBA030300625	PIN	, Start Year: 01-JAN-83	2
17	SBA324410302	LEVER	Fork, Start Year: 01-JAN-83	1
18	SBA324410331	SHIFT, FORK	Fork, Start Year: 01-JAN-83	1
19	SBA399100540	CLAMP	Assy., Start Year: 01-JAN-83	1
20	86511323	WASHER,M10 x 20mm OD x 2mm W	M10, Start Year: 01-JAN-83	14
21	9706704	BOLT,Hex, M10 x 1.5 x 41.58mm OAL, CI 8.8, Full Thd	HH, CL 8.8, M10 x 1.5 x 35, Start Year: 01-JAN-83	10
22	86624944	BALL,11/32" Dia	, Start Year: 01-JAN-83	4
23	SBA398210460	SPRING	Detent, Start Year: 01-JAN-83	4
24	SBA025100010	SEALING WASHER	#10, Start Year: 01-JAN-83	4
25	300383	BOLT,Hex, M10 x 1.5 x 16mm, CI 8.8, Full Thd	, Start Year: 01-JAN-83	4
26	SBA324610120	COVER	, Start Year: 01-JAN-83	2
27	86511828	SCREW,Phil Pan Hd, M6 x 12mm, CI 4.8, Full Thd	, Start Year: 01-JAN-83	4
28	SBA398110610	RUBBER BUSHING	Rubber, Start Year: 01-JAN-83	2
29	SBA030103225	COTTER PIN,M3 x 25 L	PIN, SPLIT (COTTER), M3 x 25 L, Start Year: 01-JAN-83	2
30	SBA324100160	LEVER	, Start Year: 01-JAN-83	2
31	100016	NUT,M10 x 1.5, CI 8, Brass	, Start Year: 01-JAN-83	2
32	SBA398180210	HANDLE GRIP	Grip, Start Year: 01-JAN-83	2
33	SBA030300545	COILED PIN	PIN, COILED, Start Year: 01-JAN-83	2
34	SBA398400361	DIPSTICK	Indicator, Resin, Start Year: 01-JAN-83	1
35	SBA054109013	GASKET	, Start Year: 01-JAN-83	1
36	SBA324010080	COVER	, Start Year: 01-JAN-83	1
37	SBA324990061	GASKET	, Start Year: 01-JAN-83	1
38	SBA398210580	SPRING	, Start Year: 01-JAN-83	2
39	SBA011511030	CAPTIVE WASHER SCREW,Hex, M10 x 30, G5	SCREW, CAPTIVE WASHER, Hex, M10 x 30, G5, Start Year: 01-JAN-83	9
40	SBA398210880	SPRING	Detent, Start Year: 01-JAN-83	2
41	SBA324900011	BLOCK	Magnet, W/White Dot, Start Year: 01-JAN-83	1
42	SBA030300422	SPRING	Pin, Start Year: 01-JAN-83	2
43	SBA386750061	SWITCH	Safety Start, Start Year: 01-JAN-83	1
		See Service Bulletin, 7-83, 5T	See Service Bulletin, 7-83, 5T	1
44	SBA015150410	SCREW	M4 x .7 x 10, Start Year: 01-JAN-83	2
45	SBA399111140	CLAMP	, Start Year: 01-JAN-83	1
46	SBA398113380	SEAL	Change Lever, Start Year: 01-JAN-83	2