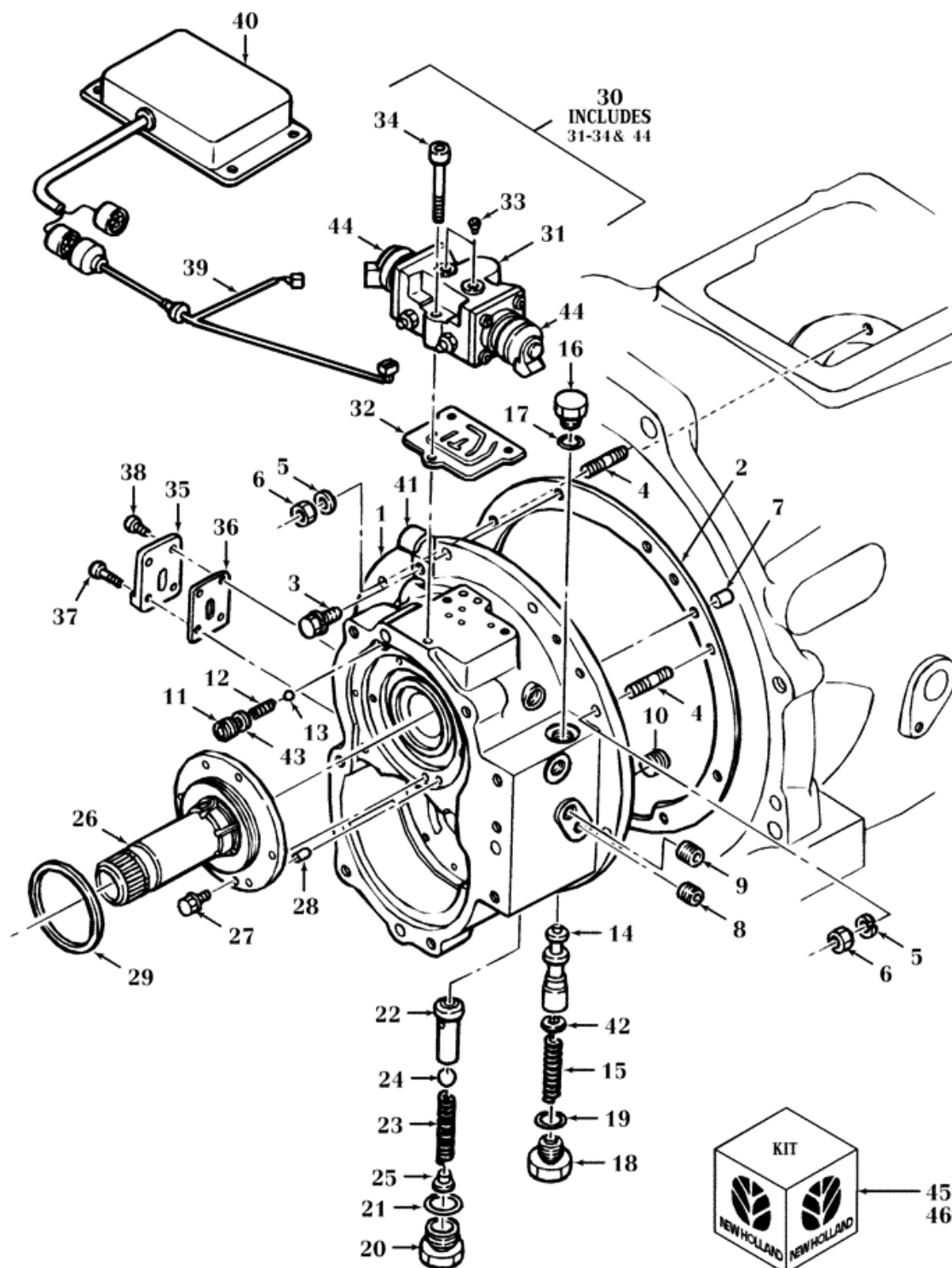


(345D) - 3 CYL TRACTOR LOADER (9/92-10/00) > (07K04) - TRANSMISSION VALVE





PARTS & MERCHANDISE
STORE

New Holland Agriculture 621 State Street
NA Customer Relations@newholland.com Racine, Wisconsin 53404
866-639-4563 option 1

(345D) - 3 CYL TRACTOR LOADER (9/92-10/00) > (07K04) - TRANSMISSION VALVE

Diag #	Part #	Name	Description	Qty
1	K3660223112	HOUSING	Valve Housing, Start Year: 01-JAN-88	1
2	K3660223121	GASKET	, Start Year: 01-JAN-88	1
3	K0113351030	BOLT	M10 x 1.25 x 30, Years: 01-JAN-88-31-JUL-89	6
3	K0112351035	BOLT	M10 x 1.5 x 35, Start Year: 01-AUG-89	6
4	K0151751028	STUD	M10 x 1.25 x 28, Years: 01-JAN-88-31-JUL-89	2
4	K0151751028	STUD	M10 x 1.25 x 28, Start Year: 01-AUG-89	2
5	K0451250100	WASHER	Spring, Start Year: 01-JAN-88	2
6	K0217650100	NUT	M10 x 1.25, Years: 01-JAN-88-31-JUL-89	2
6	K0215650100	NUT	M10 x 1.5, Start Year: 01-AUG-89	2
7	K0501201016	PIN	Knock, Start Year: 01-JAN-88	2
8	K3660223071	PLUG	, Start Year: 01-JAN-88	1
9	236622	PLUG	, Start Year: 01-JAN-88	1
10	513364	PLUG	Pipe, HS, 1/2"-14, Start Year: 01-JAN-88	1
11	K3660223171	PLUG	, Start Year: 01-JAN-88	1
12	K3660223183	SPRING	, Start Year: 01-JAN-88	1
13	K0771500803	BALL	, Start Year: 01-JAN-88	1
14	K3660223211	SPOOL	, Start Year: 01-JAN-88	1
15	K3660223222	SPRING	, Start Year: 01-JAN-88	1
16	K3660223241	PLUG	, Start Year: 01-JAN-88	1
17	SBA052109078	O-RING	, Start Year: 01-JAN-88	1
18	K3660223251	CAP	1, Start Year: 01-JAN-88	1
19	SBA052100200	O-RING, 19.8mm ID x 2.4mm Width	, Start Year: 01-JAN-88	1
20	K3660223261	CAP	2, Start Year: 01-JAN-88	1
21	SBA052100210	O-RING	P21, Start Year: 01-JAN-88	1
22	K3660223031	KIT	Seat, Years: 01-JAN-88-31-AUG-93	1
23	K3660223031	KIT	Spring, Years: 01-JAN-88-31-AUG-93	1
24	K3660223031	KIT	Ball, Years: 01-JAN-88-31-AUG-93	1
25	K3660223292	SHIM	, Start Year: 01-JAN-88	1
26	K3660223301	SHAFT	Support Assy., Stator, Start Year: 01-JAN-88	1
27	K0112350820	BOLT	, Start Year: 01-JAN-88	4
28	K0501200610	PIN	Knock, Start Year: 01-JAN-88	2
29	K3660223331	GASKET	Ring, Seal, Start Year: 01-JAN-88	1
30	K3660223802	HYDRAULIC VALVE	Valve, Proportional, Incl. Ref. 31 thru 34	1
31	K3660223812	HYDRAULIC VALVE	Valve, Proportional, Start Year: 01-JAN-88	1
32	K3660223821	GASKET	, Start Year: 01-JAN-88	1

Diag #	Part #	Name	Description	Qty
33	K3660223831	PLUG	, Start Year: 01-JAN-88	2
34	K0131110828	SCREW	Bolt, Start Year: 01-JAN-88	3
35	K3660023871	PLATE	, Start Year: 01-JAN-88	1
36	K3660023881	GASKET	, Start Year: 01-JAN-88	1
37	K0131110625	BOLT	, Start Year: 01-JAN-88	2
38	K0131110618	BOLT	, Start Year: 01-JAN-88	2
39	82006381	WIRE HARNESS	Harness, Start Year: 01-JAN-88	1
40	F0NN7Z319AA	BOX	Assy., Control, Start Year: 01-JAN-88	1
		Refer to Service Bulletin I4, 2-92., Diodes & Relays are Part of Hareness, NSS	Refer to Service Bulletin I4, 2-92., Diodes & Relays are Part of Hareness, NSS	1
40	F0NN7Z319AAR	REMAN-ELECTRONIC CONTROL UNIT	345C, 545C Transmission, Both (12/88-8/92), 345D, 445D (9/92-10/00), 545D (9/92-12/00), All Control, 445C (12/88-8/92), All 3 CYL TRACTOR LOADER, Assy	1
40	F0NN7Z319AAC	CORE-ELECTRONIC CONTROL UNIT	Return Number	1
41	K3715034461	CLAMP	Cord, Start Year: 01-JAN-88	1
42	K3660223231	SHIM	.5mm, Start Year: 01-JAN-88	1
43	K3660223191	SHIM	.5mm, Start Year: 01-JAN-88	1
44	K3660224151	ELECTROMAGNET	Solenoid Assy., Proportional Valve, W/Bolts, Start Year: 01-JAN-90	2
45	K3660224251	KIT	Rebuild Proportional Valve, Start Year: 01-JAN-90	1
46	K3660223031	KIT	Service, Transmission Relief Valve Poppet Type, Years: 01-JAN-92-30-SEP-93	1