

Rigging Software® 1.0

An Aid to Arborist Rigging

Do you know that in a 5-foot fall, an 800-pound log can deliver nearly 22,000 pounds of force on your equipment? Do you know the result if this scenario were tipped on a 30-degree angle? Thanks to engineer friends within the industry, computer techs and ArborMaster®, this awesome new software program brings safety one giant step closer to your everyday routine. Rigging Software® 1.0 uses a built-in log weight chart against a variety of known variables to allow professional riggers to quickly calculate forces involved in various rigging scenarios. Simply key in the length and diameter of the wood being cut, choose from the list of rope sizes (including length within the system), pick out your branch angle from an illustration, and the program does the rest. Within seconds you'll know the factor of safety and receive advice on alternatives before your team ties the first knot!

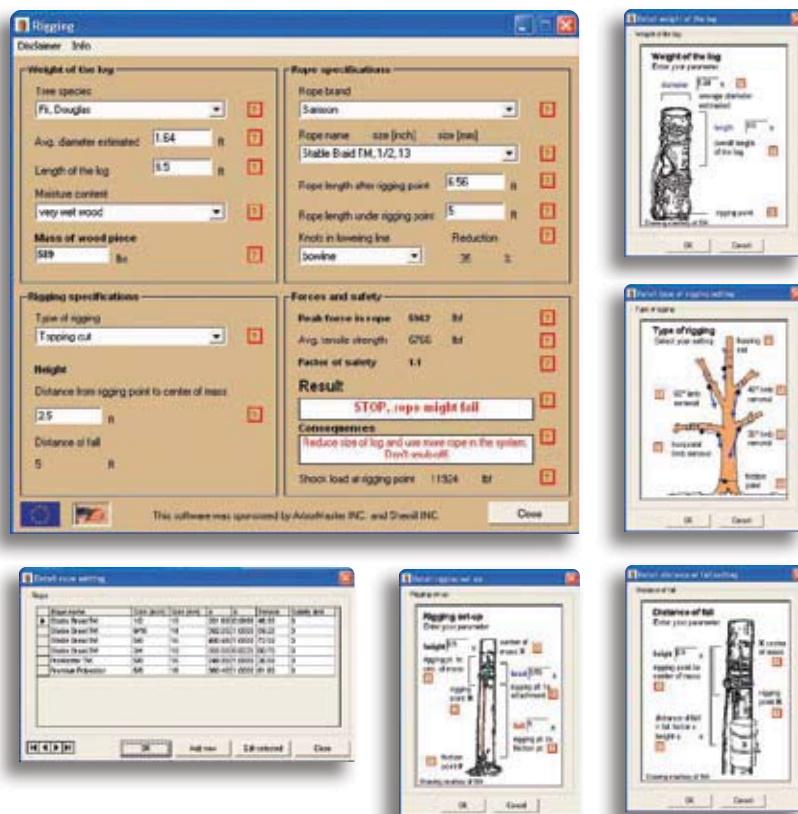
System requirements: Windows 98 or higher, 16MB Ram, 1 GB hdd, and/or Windows compatible PDA (not Palm)

30196 - \$48

WARNING: Because of the many variables involved in arborist rigging operations (including equipment age/condition, decision making processes, etc.), results are only approximate. Rigging Software 1.0 DOES NOT teach rigging, but is merely an aid.

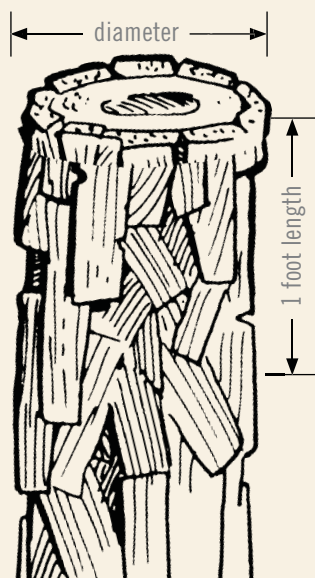


Lap, desk or PDA



Log Weight Chart

Download this weight chart at:
www.sherrilltree.com/PDF



SPECIES	WEIGHT PER CUBIC FT.	WEIGHT OF A ONE-FOOT SECTION (BASED ON AVERAGE DIAMETER)															
		10"	12"	14"	16"	18"	20"	22"	24"	26"	28"	30"	32"	34"	36"		
Apple	55	30	43	59	77	97	120	145	173	203	235	270	307	347	368		
Ash, White	48	26	38	51	67	85	104	126	150	177	205	235	267	302	338		
Basswood	42	23	33	45	59	74	92	111	132	155	180	206	235	265	297		
Beech	54	29	42	58	75	95	118	142	169	199	231	265	301	340	381		
Birch, Paper	50	27	39	53	70	88	109	132	157	184	214	245	279	317	353		
Birch, Yellow	57	31	45	61	80	101	124	151	179	210	244	280	319	360	403		
Butternut	46	25	36	49	64	81	100	121	144	170	197	226	257	290	325		
Cherry, Black	45	25	35	48	63	79	98	119	141	166	192	221	251	283	318		
Chestnut	55	30	43	59	77	97	120	145	173	203	235	270	307	347	388		
Cottonwood	49	27	38	52	68	86	107	129	154	180	209	240	273	310	346		
Elm, American	54	29	42	58	75	95	118	142	169	199	231	265	301	340	381		
Gum, Black	45	25	35	48	63	79	98	119	141	166	192	221	251	283	318		
Gum, Red	50	27	39	53	70	88	109	132	157	184	214	245	279	317	353		
Hackberry	50	27	39	53	70	88	109	132	157	184	214	245	279	317	353		
Hickory, Shagbark	64	35	50	68	89	113	140	169	201	236	273	314	357	403	452		
Honey Locust	61	33	48	65	85	108	133	161	192	225	261	299	341	385	431		
Magnolia, Ev	59	32	46	63	82	104	129	156	185	217	252	289	329	372	417		
Maple, Red	50	27	39	53	70	88	109	132	157	184	214	245	279	317	353		
Maple, Silver	45	25	35	48	63	79	98	119	141	166	192	221	251	283	318		
Maple, Sugar	56	31	44	60	78	99	122	148	176	206	239	275	313	353	396		
Oak, California Black	66	36	51	70	92	116	144	174	207	243	282	323	368	416	466		
Oak, Live	76	41	60	81	106	134	166	200	238	280	324	372	424	478	536		
Oak, Red	63	34	49	67	88	111	137	166	198	232	269	309	351	397	445		
Oak, White	62	34	48	66	86	109	135	163	194	228	265	304	346	390	437		
Pecan	61	33	48	65	85	108	133	161	192	225	261	299	341	385	431		
Persimmon	63	34	49	67	88	111	137	166	198	232	269	309	351	397	445		
Poplar, Yellow	38	21	30	40	53	67	83	99	119	140	162	186	211	239	268		
Sassafras	44	24	34	47	61	78	96	116	138	162	188	215	245	277	310		
Sycamore	52	28	41	55	72	92	113	137	163	191	222	254	290	327	366		
Walnut, Black	58	32	45	62	81	102	126	153	182	213	248	284	323	364	409		
Pine, White	36	20	28	38	50	64	78	95	113	128	154	176	201	227	254		
Spruce, Red	34	19	27	36	47	60	74	90	106	125	145	166	189	214	239		

Information from the U.S. Department of the Interior, National Park Service sheet "Rope, Knots and Climbing".

ANSI Z133.1/5.7.7 states that—
"A green log weight chart shall be available to the crew."