

1021867 HOSE KIT INSTALLATION

WARNING

- Keep hands and body away from pressurized lines. Use paper or cardboard, not hands or other body parts to check for leaks. Wear safety goggles. Hydraulic fluid under pressure can easily penetrate skin and will cause serious injury or death.
- Make sure that all operating and service personnel know that if hydraulic fluid penetrates skin, it must be surgically removed as soon as possible by a doctor familiar with this form of injury or gangrene, serious injury, or death will result. **CONTACT A PHYSICIAN IMMEDIATELY IF FLUID ENTERS SKIN OR EYES. DO NOT DELAY.**

WARNING

- Make sure all hydraulic hoses, fittings, and valves are in good condition and not leaking before starting power unit or using equipment. Check and route hoses carefully to prevent damage. Hoses must not be twisted, bent sharply, kinked, frayed, pinched, or come into contact with any moving parts. Operate moveable components through full operational range to check clearances. Replace any damaged hoses immediately.

Install Bulkhead Adapter and Bracket

1. Install bulkhead adapter (3) to the bulkhead adapter bracket (5). Secure using nut supplied with bulkhead adapter.
2. Attach female quick coupler (17) to the bulkhead adapter.
3. Remove cap screw from the right tractor bracket, place adapter bracket over hole and secure using hardware previously removed.

3. 1009495 Adapter, bulkhead
3/8 NPTM x 9/16 JICM
5. 1013521 Bracket, bulkhead adapter
17. 64299 Quick coupler, female

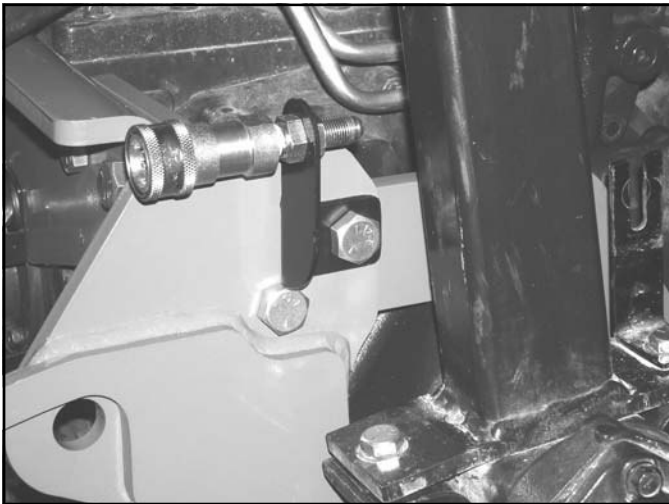


Figure 22. Bulkhead Adapter Bracket Installed

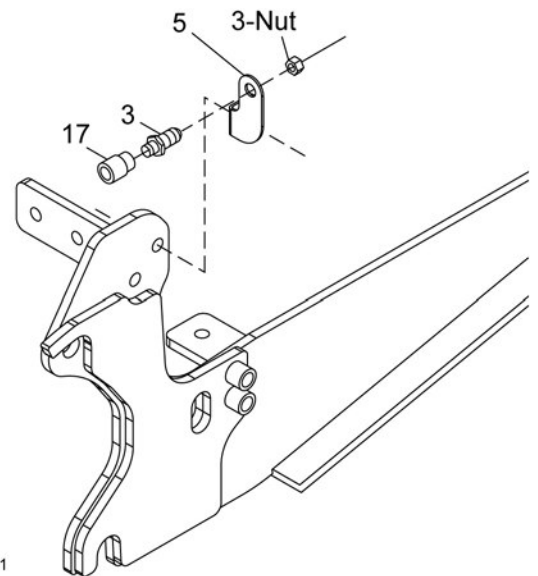


Figure 23. Bulkhead Adapter Bracket Installation

Install Hydraulic Block

For Tractors with Rear Remote

1. Locate the hydraulic manifold block under the right rear fender.
2. Remove three of the four bolts securing the cover to the manifold. See Figure 24.
3. Install cap screw (9) in rear remote valve block to help keep proper alignment. Remove remaining bolt and cover.
4. Insert O-rings (15) into the opening on the back side of hydraulic block (4).
5. Place hydraulic block (4) over rear remote valve block and insert cap screw (7) with lock washer (6) into lower rear hole.
- NOTE:** An extra lock washer (6) maybe needed when tightening cap screw (7).
6. Remove cap screw (9), rotate hydraulic block up and align holes. Secure into position using three cap screws (9) and lock washers (6). See Figure 26. Make sure O-rings are seated properly.
7. Install adapter (14) and elbow (16) into hydraulic block as shown in Figure 26.

- | | | |
|-----|---------|-------------------------------------|
| 4. | 1011423 | Hydraulic block |
| 6. | 2472 | 5/16 Lock washer |
| 7. | 307128 | M8 x 1.25P x 150 mm HHCS |
| 9. | 307131 | M8 x 1.25P x 90 mm HHCS |
| 14. | 62367 | 9/16 JICM x 9/16 ORBM |
| 15. | 62726 | O-ring, .478 ID x .103 |
| 16. | 63558 | Elbow, 9/16 JICM x 9/16 ORBM 90° |

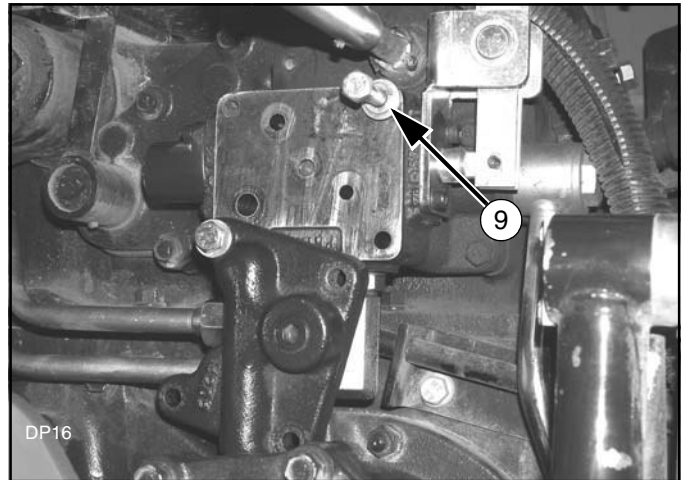


Figure 24. Remove Manifold Block Cover

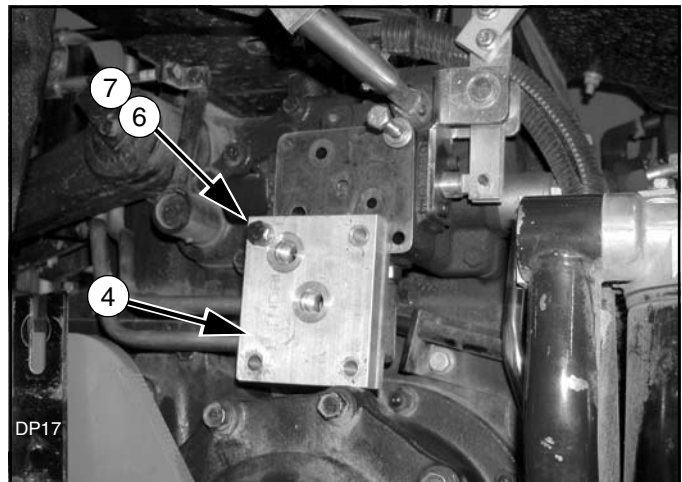


Figure 25. Hydraulic Block Installation

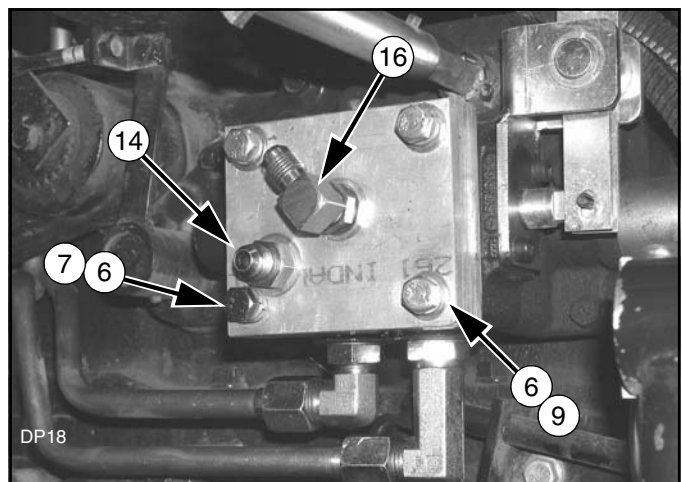


Figure 26. Hydraulic Block and Fittings Installed

Install Hydraulic Block

For Tractors without Rear Remote.

1. Locate the hydraulic manifold block under the right rear fender.
2. Remove the four bolts securing the cover to the manifold.
3. Insert O-rings (15) into the openings on the back side of hydraulic block (4).
4. Place hydraulic block (4) over hydraulic manifold and insert cap screw (10) with lock washer (6) into lower rear hole. Insert cap screws (8) and lock washers (6) into the remaining three holes.
5. Install adapter (14) and elbow (16) into hydraulic block as shown in Figure 27.

- 4. 1011423 Hydraulic block
- 6. 2472 5/16 Lock washer
- 8. 307130 M8 x 1.25P x 40 mm HHCS
- 10. 307134 M8 x 1.25P x 100 mm HHCS
- 14. 62367 Adapter, 9/16 JICM x 9/16 ORBM
- 15. 62726 O-ring, .478 ID x .103
- 16. 63558 Elbow, 9/16 JICM x 9/16 ORBM 90°

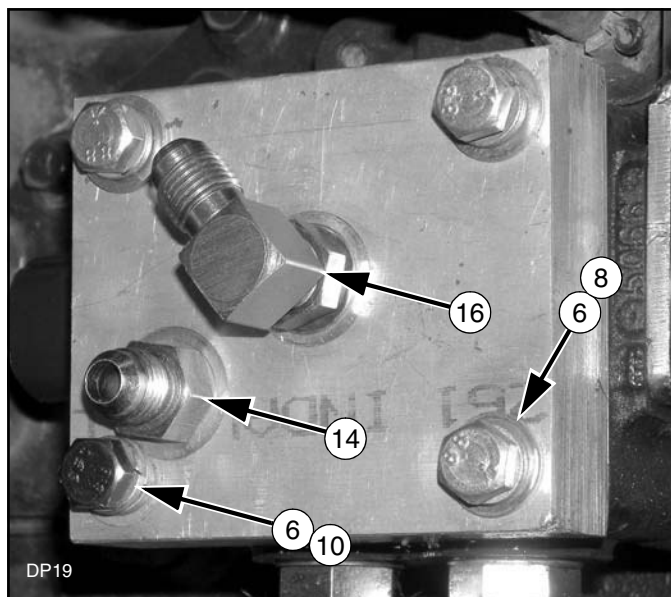


Figure 27. Hydraulic Block Installed

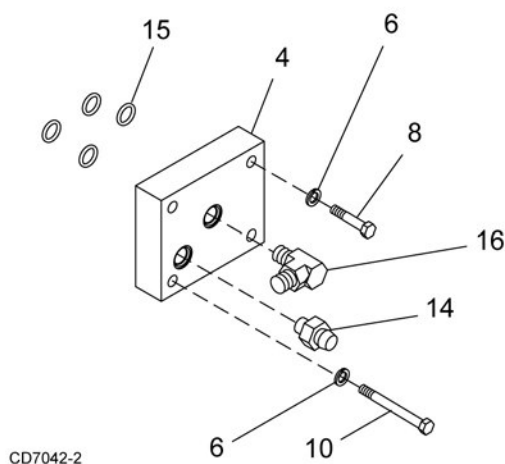


Figure 28. Hydraulic Block and Fitting Installation

Connect Hydraulic Hoses to Tractor

1. Attach straight end of hose (12) to elbow (16) in the hydraulic block.
2. Attach opposite end of hose (12) to the bulkhead adapter (3).
3. Attach elbow (13) and male quick coupler (18) to the straight end of hose (2).
4. Attach 90 degree end of hose (2) to adapter (14) in the hydraulic manifold. Route hose out the back of the tractor.
5. Once all hoses are installed and fitting are tightened, install fender panel and both rear tires.

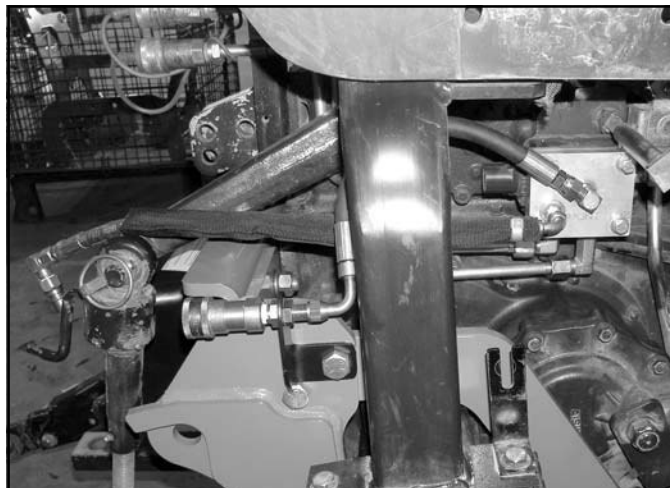


Figure 29. Hydraulic Hoses Installed

- | | | |
|-----|---------|---|
| 2. | 1009492 | Hose, 21" x 9/16 JICF x 9/16 JICM |
| 3. | 1009495 | Adapter, bulkhead 3/8 NPTM x 9/16 JICM |
| 12. | 360215 | Hose, 14" x 9/16 JICF x 9/16 JICF 90° |
| 13. | 59260 | Elbow, 9/16 JICF x 3/8 NPTM 90° |
| 14. | 62367 | Adapter, 9/16 JICM x 9/16 ORBM |
| 16. | 63558 | Elbow, 9/16 JICM x 9/16 ORBM 90° |
| 18. | 64300 | Quick coupler, male 3/8 |

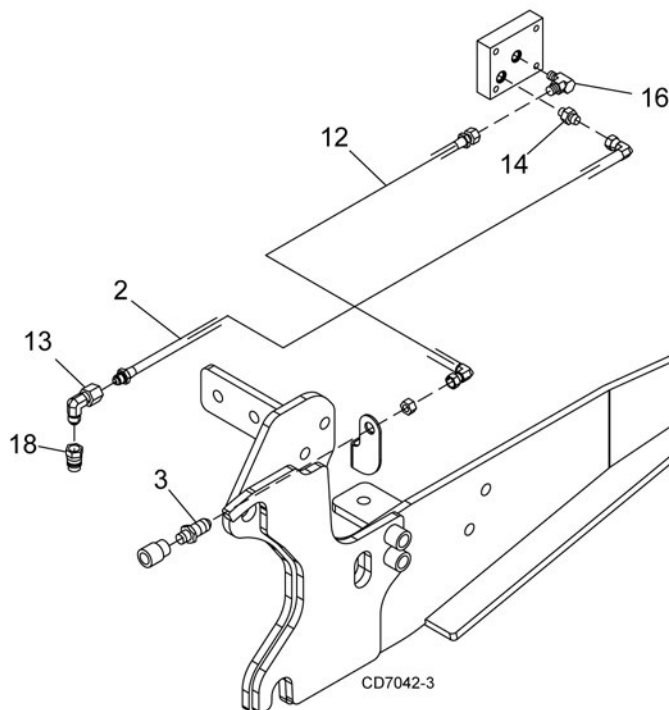


Figure 30. Hydraulic Hose Installation

Attach Hoses to Backhoe Valve

1. Attach adapters (11) to the backhoe valve IN and OUT ports.
2. Attach male quick coupler (18) to end of hose (1).
3. Attach opposite end of hose to the IN port on the backhoe valve.
4. Attach elbow (19) and female quick coupler (17) to second hose (1).
5. Attach opposite end of hose to the OUT port on the backhoe valve.

1. 1006903 Hose, 56" x 3/8 NPTM x 3/4 ORBM
11. 315052 Adapter, 3/4 ORBF x 7/8 ORBM
17. 64299 Quick coupler, female
18. 64300 Quick coupler, male
19. 313017 Elbow, 3/8 NPTM x 3/8 NPTF 90°

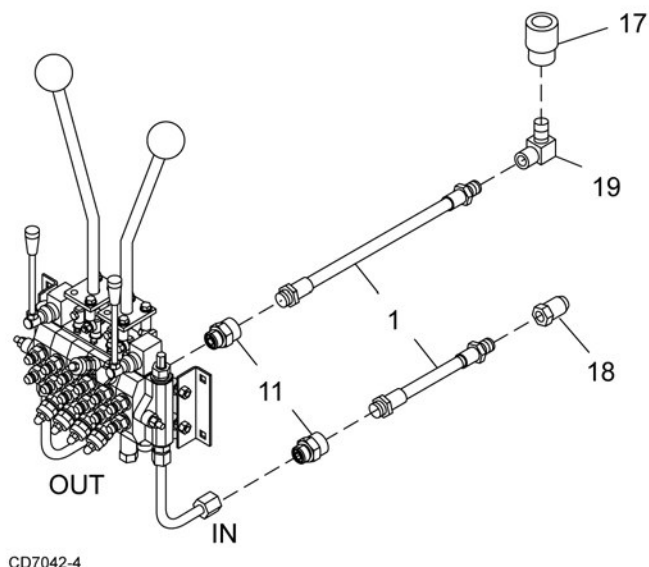


Figure 31. Backhoe Hose Connection

Connect Hoses When Attaching Backhoe

1. Connect male quick coupler (18) on end of hose (1) from the IN port of the backhoe valve to female quick coupler (17) on bulkhead adapter bracket.
2. Connect male quick coupler (18) on end of hose (2) from the hydraulic block on the tractor to the female quick coupler (17) from the OUT port on the backhoe valve.

1. 1006903 Hose, 56" x 3/8 NPTM x 3/4 ORBM
2. 1009492 Hose, 21" x 9/16 JICF x 9/16 JICM
17. 64299 Quick coupler, female
18. 64300 Quick coupler, male

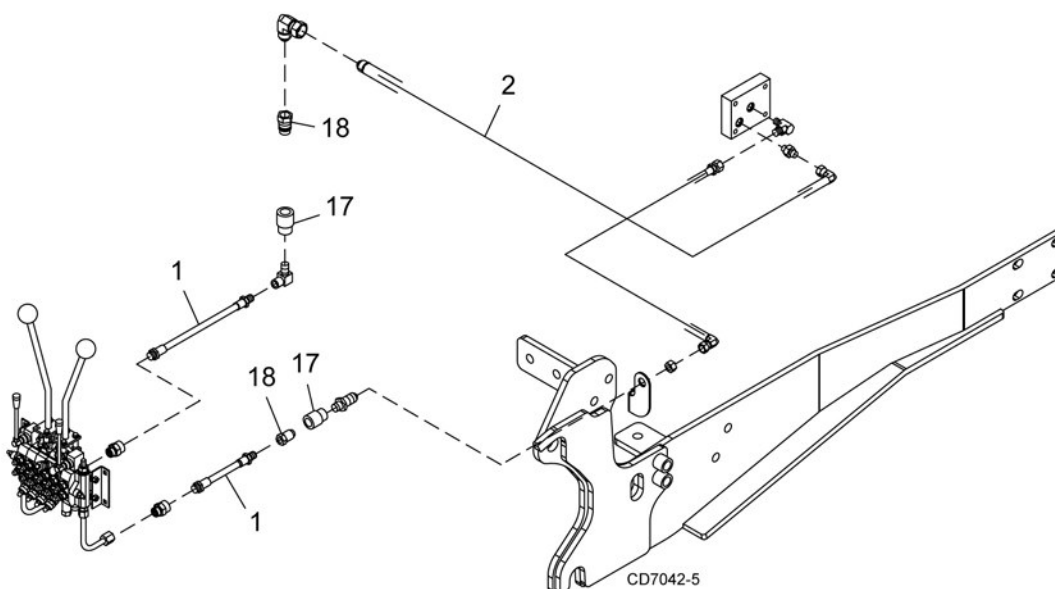


Figure 32. Backhoe to Tractor Hose Connections