



# PARTS CATALOG

# Introduction

1. This parts catalog is a first edition of the L100V6CA1T1AA Diesel engine.

	Parts catalog No.	Date of issue	Remarks
First edition	000Y00R6310	Mar., 2005	

2. This parts catalog does not contain the technical data needed for maintenance service.

3. The illustrations used in this parts catalog have been simplified for clarity.

4. The contents of this parts catalog are subject to change without notice.

5. Be sure to use only Yanmar genuine parts for repairs. If imitation parts are used, it may cause engine defects.

## How to read this Parts Catalog.

- 1.Parts mentioned in Parts Catalog may not necessarily be standard equipping parts
- 2.Parts change may be made without prior notice.
- 3.Form of this Parts Catalog.

Y00F2161 29. FUEL INJECTION PUMP (W/BOOST)

①  
↓  
REF.

②  
↓  
LEV.

④

⑥

PARTS No.	DESCRIPTION	QTY	I	R
		(A) (B) (C) (D) (E) (F)		
1	729595-51390 FUEL INJECTION PUMP	1	1	1
1-1	729595-51391 FUEL INJECTION PUMP	1	1	1
	(A=E00185) (B=E00200)			
3	26022-060162 SCREW M 6X16	9	9	9
I 3-1	26022-060162 SCREW M 6X16	4	4	4
	(A=E00156) (B=E00156) (C=E00156) (D=E00156) (E=E00156)			
4	129470-51040 CAMSHIFT	9	9	9
5	122710-51050 BEARING. ROLLER	9	9	9
6	129470-51060 RETAINER	9	9	9

Remarks

(1) BOOST COMPENSATOR TYPE.  
OPTIONAL PART. TO E#00155  
(4JH-DT, 4JH-DTZ)

### ①Ref. No,

The Ref. No. in the list may not be in accordance with the Ref. No. on illustration.

(Ex.) illustration No, List heed No,  
1 1 (Before change) → 1-1 (After change)

When interchangeable symbol N, and k, illustrations for the new parts are sometimes omitted.

### ②Lev. (Level)

Indication and Meaning of Level

Level Hereunder is given the relation among the number of number (1,2,3) the level and the nominal parent-child relationship.

1 ----- Parent parts (Assembly parts)

2 ----- Child parts included in " 1 " (Semi-Assembly parts, component parts of Assembly parts.)

3 ----- Child parts included in " 2 ", Grand-child parts in terms of " 1 ".

(Component parts of Semi-Assembly parts.)

Note) A parts of non-sale parts are illustrated but not listed.

### ③Change Mark

Change Mark " I " is given to the part for which a design change was made at this time.

The design change was not shown in the last published Parts Catalog.

### ④Interchangeability Mark

In the case where a part change took place, one of the following interchangeability marks is indicated for that part

Symbol	Interchangeability	Contents note
N	Old  New	New Part is interchangeable for Old Part but not interchangeable conversely.
Q	Old  New	New Part is not interchangeable for Old Part but interchangeable conversely.
R	Old  New	New Part is interchangeable for Old Part and vice versa.
S	Old  New	New Part is not interchangeable for Old Part and vice versa.
W		Part newly added.
Z		Part discontinued.
F		Not interchangeable single part but interchangeable by set of the related parts.
K		Changed only in quantity used.

### ⑤Effective Machine No,

When a part is changed, Effective Machine No, of a Model for which the part is applicable is indication

In each column of (A)-(F).

Product Symbol	Product No,	Product Symbol	Product No,
C	Clutch No, Compressor No,	M	Machine No,
D	Drive No,	T	Tractor No,
E	Engine No,	Note 1)※	Date

Note 1) Date may follow the symbol in some cases.(Ex.) ※1996.01

Note 2) As far as engine models shown by " XXX " are concerned, the modification of the parts could not be Predicted or the engine models themselves could not be identified.

Note 3) (A=E/#00185) means that the design change on the part has been effective for the model at the, column (A) (in the case, for 4JH-DT) on and from E/(Engine Serial Number) 00185

### ⑥Remarks Mark

Figures or alphabets (Symbols) are entered in the remark column.

The comments (remarks) on the pertinent parts are indicated in the lower part of the list by the same symbols a those stated above.

# CONTENTS

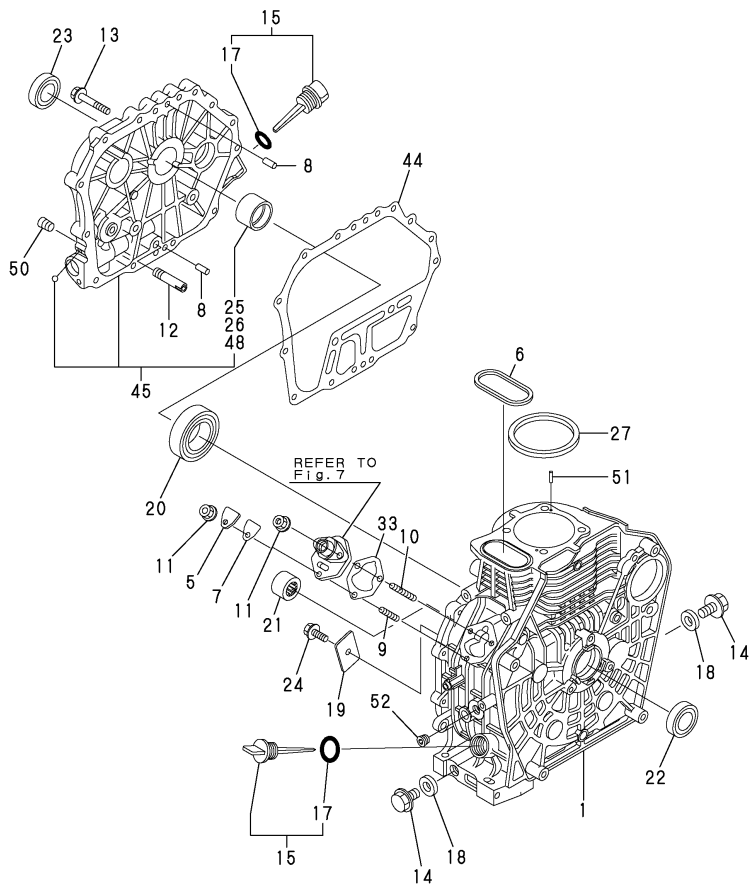
MODEL : L100V6CA1T1AA

PC NO : 0CR10-G63100

Fig.No.	GROUP NAME
L100V6CA1T1AA	
1.	CYLINDER BLOCK
2.	CYLINDER HEAD & BONNET
3.	AIR CLEANER & MUFFLER
4.	CRANKSHAFT,PISTON & CAMSHAFT
5.	LUB.OIL PUMP & GOVERNOR
6.	COOLING & STARTING DEVICE
7.	FUEL INJECTION PUMP & FUEL INJECTION VALVE
8.	FUEL TANK & FUEL PIPE
9.	STARTING MOTOR & DYNAMO(PREVIOUS)
11.	(9A)STARTING MOTOR & DYNAMO(NEW)
10.	TOOL,LABEL & GASKET SET

Fig.No.	GROUP NAME
---------	------------

Fig.1. CYLINDER BLOCK



Remarks  
(1)REPAIR PART.  
(2)UNDER SIZED(U.S.=0.25)PART.  
(3)UNDER SIZED(U.S.=0.50)PART.

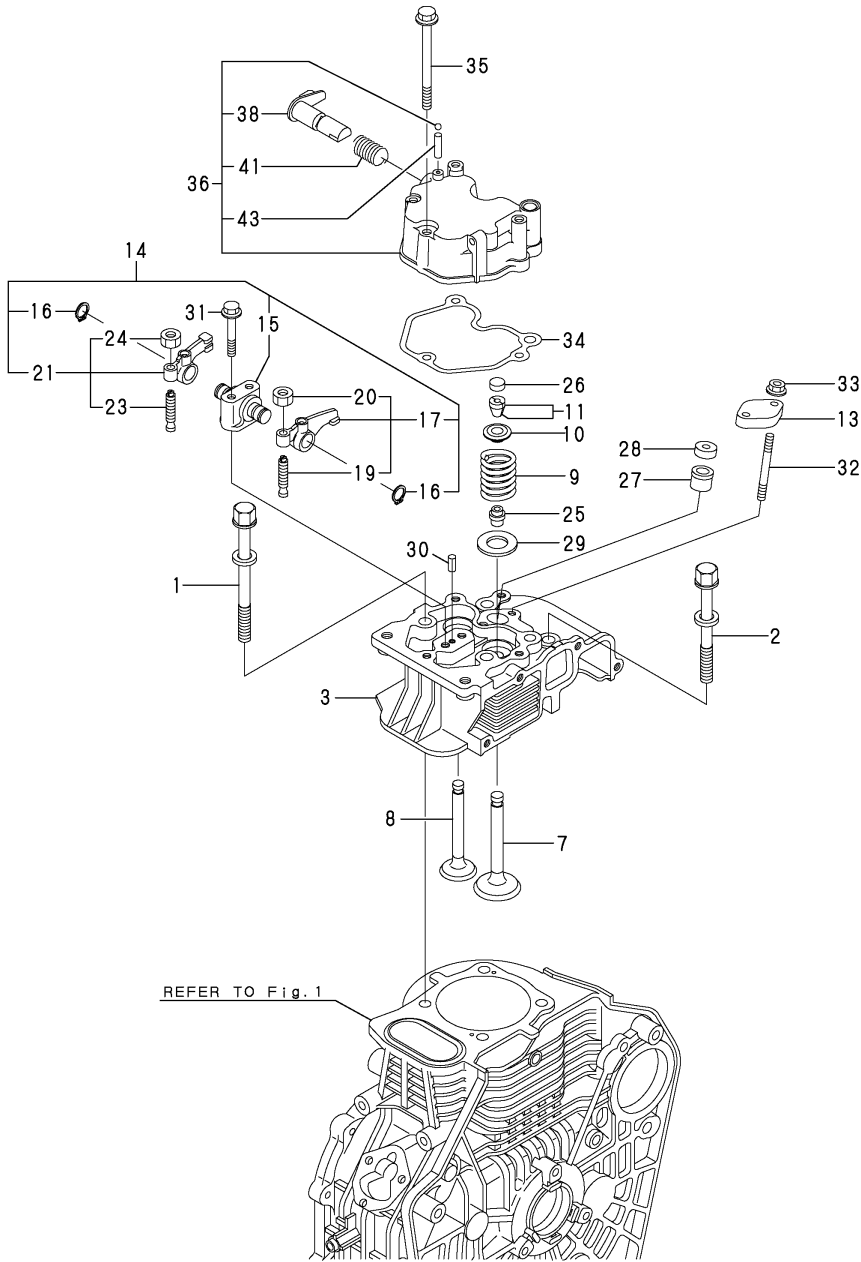
OCR10-G63100 1. CYLINDER BLOCK

(A)=L100V6CA1T1A  
(B)=  
(C)=

(D)=  
(E)=  
(F)=

REF.	LEV.	PARTS NO.	DESCRIPTION	Q'TY						I	R
				(A)	(B)	(C)	(D)	(E)	(F)		
1	1	114310-01010	BLOCK ASSY, CYLINDER	1							
5	1	114299-01830	COVER,(FO PUMP	1							
6	1	114699-01380	O-RING	1							
7	1	114250-01841	GASKET	1							
8	1	114299-01600	PIN, 8X12	2							
9	1	26226-060182	STUD M 6X 18 PLATED	1							
10	1	26226-060222	STUD M 6X 22 PLATED	2							
11	1	26366-060002	NUT M 6	3							
12	1	114299-35150	PIPE, L.O. INLET	1							
13	1	26106-080352	BOLT M 8X 35 PLATED	16							
14	1	114299-01690	PLUG M16	2							
15	1	114699-01760	CAP, W/LUB.OIL GAUGE	2							
17	2	114299-01950	O-RING	2							
18	1	22190-160002	SEAL WASHER 16S	2							
19	1	114299-02030	RETAINER	1							
20	1	114650-02150	BALL BEARING	1							
21	1	24162-152220	NEEDLE, 152220	1							
22	1	24423-355008	SEAL, OIL	1							
23	1	24423-355008	SEAL, OIL	1							
24	1	26106-080122	BOLT M 8X 12 PLATED	1							
25	1	114650-02200	MAIN BEARING US=0.25	1							2
26	1	114650-02210	MAIN BEARING US=0.50	1							3
27	1	114695-01330	GASKET ASSY,CYL.HEAD	1							
33	1	114299-01800	SHIM SET	1							
44	1	114699-01410	GASKET, CRANK CASE	1							
45	1	114310-01450	COVER(D, CRANK CASE	1							
48	2	114650-02100	BEARING, MAIN	1							1
50	1	23876-010000	PLUG PT1/8,SCREW	1							
51	1	22312-040080	PIN 4X8,STRAIGHT	2							
52	1	23875-020000	PLUG PT1/4,STEEL	1							

Fig.2. CYLINDER HEAD & BONNET



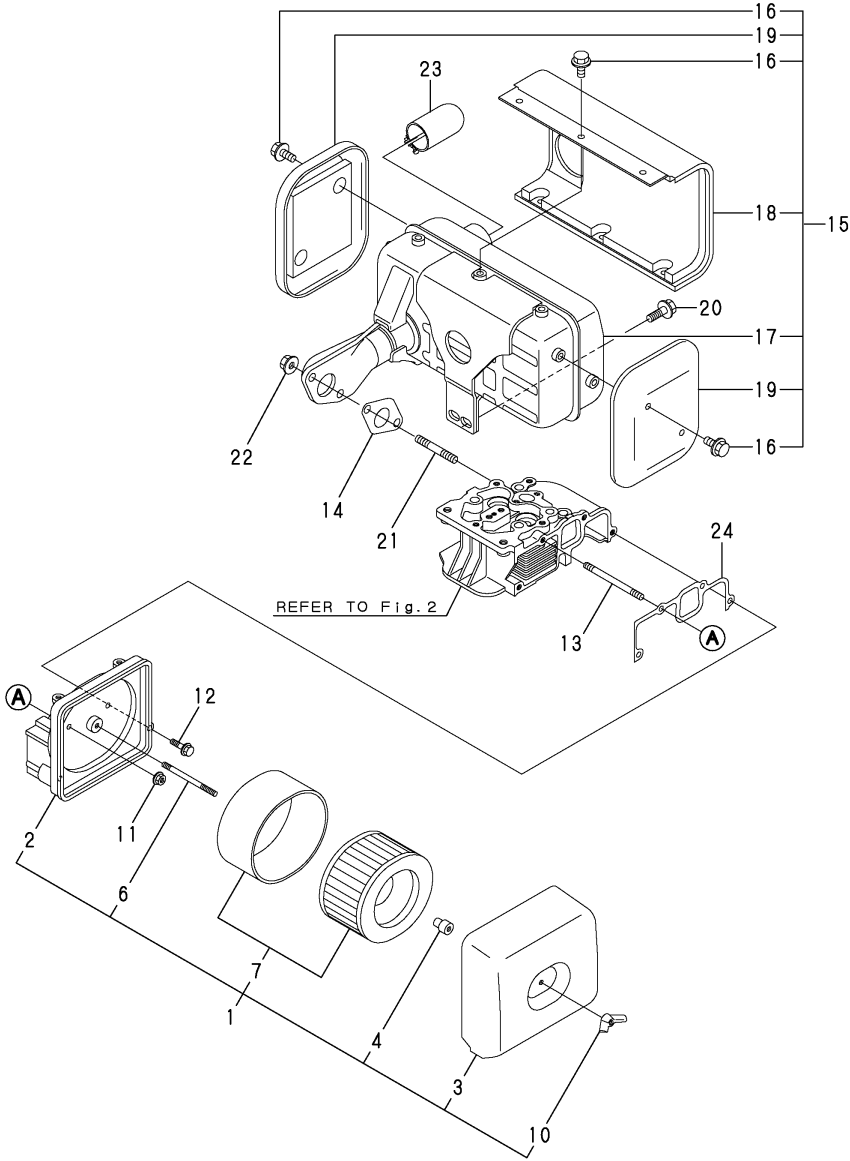
OCR10-G63100 2. CYLINDER HEAD & BONNET

(A)=L100V6CA1T1A  
(B)=  
(C)=

(D)=  
(E)=  
(F)=

REF.	LEV.	PARTS NO.	DESCRIPTION	Q'TY						I	R
				(A)	(B)	(C)	(D)	(E)	(F)		
1	1	114310-01200	BOLT, CYL.HEAD A	2							
2	1	114310-01210	BOLT, CYL.HEAD B	2							
3	1	114310-11020	HEAD ASSY, CYLINDER	1							
7	1	114310-11100	VALVE, INTAKE	1							
8	1	114310-11110	VALVE, EXHAUST	1							
9	1	114310-11120	SPRING, VALVE	2							
10	1	114310-11180	RETAINER, SPRING	2							
11	1	114310-11930	COTTER ASSY	2							
13	1	114210-11900	RETAINER, NOZZLE	1							
14	1	114310-11250	SUPPORT ASSY, ROCKER	1							
15	2	114310-11260	SUPPORT, ROCKER ARM	1							
16	2	114310-11280	C TYPE RETAINING RIN	2							
17	2	114310-11650	ARM ASSY, INTAKE	1							
19	3	114299-11240	SCREW, ADJUSTING	1							
20	3	26856-060002	LOCK NUT 6	1							
21	2	114310-11660	ARM ASSY, EXHAUST	1							
23	3	114299-11240	SCREW, ADJUSTING	1							
24	3	26856-060002	LOCK NUT 6	1							
25	1	114650-11340	SEAL, VALVE STEM	2							
26	1	104211-11370	CAP, VALVE	2							
27	1	114771-11461	GASKET, NOZZLE	1							
28	1	114295-11470	SPACER, NOZZLE	1							
29	1	114699-11600	WASHER	2							
30	1	22351-040008	SPRING PIN 4X 8	1							
31	1	26106-080502	BOLT M 8X 50 PLATED	2							
32	1	26226-060552	STUD M6X 55 PLATED	2							
33	1	26366-060002	NUT M 6	2							
34	1	114310-11310	GASKET, BONNET	1							
35	1	26106-060652	BOLT M 6X 65 PLATED	3							
36	1	114310-11950	BONNET ASSY, HEAD	1							
38	2	114210-03590	SHAFT ASSY, DECOMP.	1							
41	2	114299-03640	SPRING, DECOMP.	1							
43	2	22312-030160	PARALLEL PIN 3X16	1							

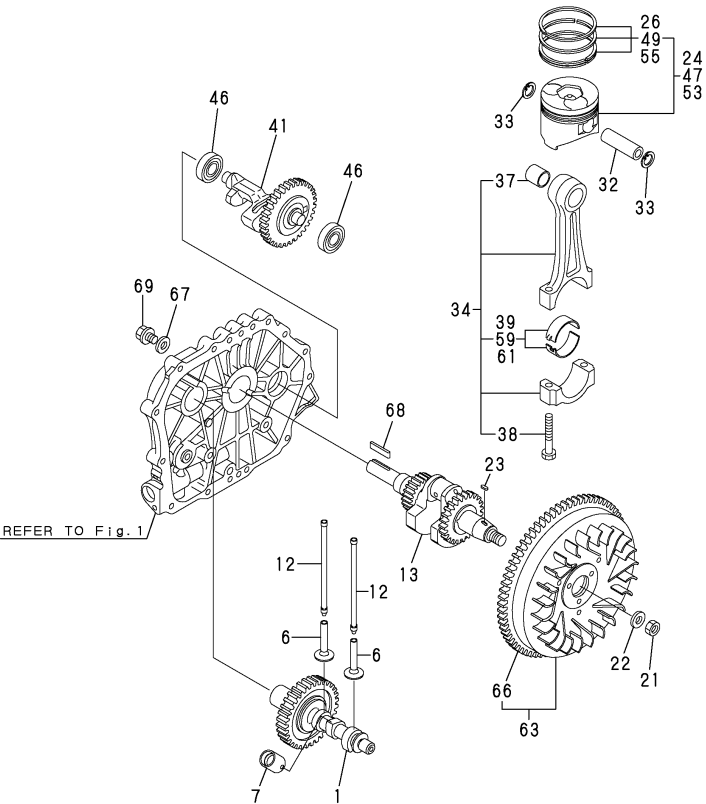
Fig.3. AIR CLEANER & MUFFLER



OCR10-G63100 3. AIR CLEANER & MUFFLER

REF.	LEV.	PARTS NO.	DESCRIPTION	Q'TY						I	R
				(A)	(B)	(C)	(D)	(E)	(F)		
1	1	114310-12510	CLEANER ASSY, AIR	1							
2	2	114310-12020	BODY, AIR CLEANER	1							
3	2	114210-12520	COVER, AIR CLEANER	1							
4	2	114210-12560	NUT, WING	1							
6	2	114210-12580	STUD BOLT	1							
7	2	114210-12590	ELEMENT ASSY	1							
10	2	114210-12600	KNOCKING KNOB	1							
11	1	114299-12300	U-NUT	3							
12	1	26106-060402	BOLT M 6X 40 PLATED	1							
13	1	26226-060352	STUD M 6X 35 PLATED	3							
14	1	114310-13200	GASKET, MUFFLER	1							
15	1	114699-13551	MUFFLER ASSY	1							
16	2	114699-13720	BOLT M6, FLANGE	10							
17	2	114699-13561	MUFFLER	1							
18	2	114699-13700	COVER A, MUFFLER	1							
19	2	114699-13710	COVER B, MUFFLER	2							
20	1	26106-080202	BOLT M 8X 20 PLATED	2							
21	1	26216-080182	STUD M 8X 18 PLATED	2							
22	1	26366-080002	NUT M 8	2							
23	1	114699-13800	EXTENSION, EXH.	1							
24	1	114310-12210	GASKET, AIR CLEANER	1							

Fig.4. CRANKSHAFT,PISTON & CAMSHAFT



Remarks  
(1)OVER SIZED(O.S.=0.25)PART.  
(2)OVER SIZED(O.S.=0.50)PART.  
(3)UNDER SIZED(U.S.=0.25)PART.  
(4)UNDER SIZED(U.S.=0.50)PART.

OCR10-G63100 4. CRANKSHAFT,PISTON & CAMSHAFT

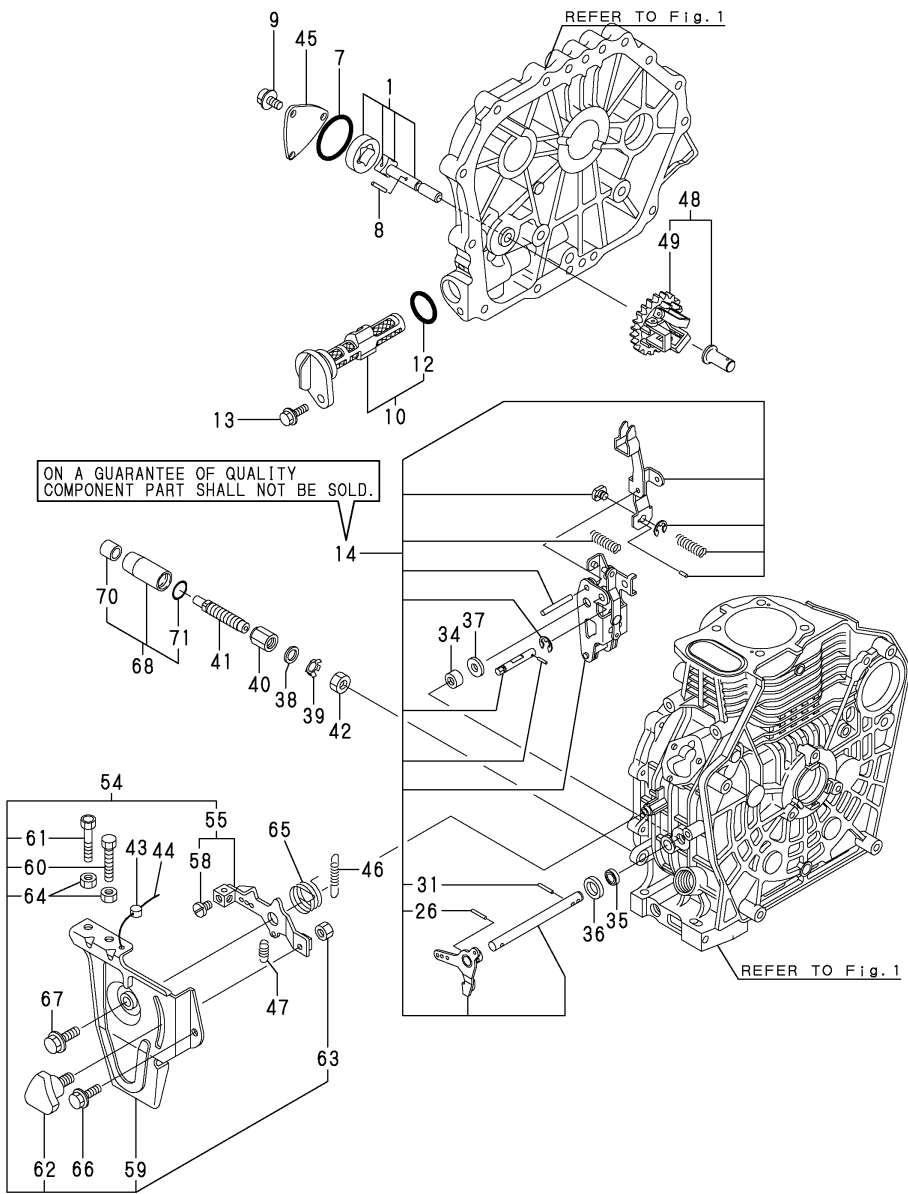
(A)=L100V6CA1T1A  
(B)=  
(C)=

(D)=  
(E)=  
(F)=

REF.	LEV.	PARTS NO.	DESCRIPTION	Q'TY						I	R
				(A)	(B)	(C)	(D)	(E)	(F)		
1	1	714310-14580	CAMSHAFT ASSY	1							
6	1	114310-14200	TAPPET	2							
7	1	114210-14300	TAPPET ASSY, ROLLER	1							
12	1	114310-14400	ROD ASSY, PUSH	2							
13	1	714310-21700	CRANKSHAFT(E-D ASSY	1							
21	1	114699-21220	NUT	1							
22	1	114699-21550	WASHER, FLYWHEEL	1							
23	1	22512-050140	KEY 5X 14	1							
24	1	714310-22720	PISTON W/RINGS (D	1							
26	2	714310-22500	RING SET, PISTON	1							
32	1	114699-22300	PIN, PISTON D=23	1							
33	1	129792-22400	CIRCLIP 23	2							
34	1	714310-23700	ROD ASSY, CONNECTING	1							
37	2	124060-23100	BUSH, PISTON PIN	1							
38	2	119810-23200	BOLT, CONNECTING ROD	2							
39	2	714650-23600	BEARING, CRANKPIN	1							
41	1	714310-28510	SHAFT ASSY, BALANCER	1							
46	1	24101-063040	BALL BEARING	2							
47	1	714310-22620	PISTON W/RING OS=.25	1							1
49	2	714310-22540	RING SET O.S.=0.25	1							1
53	1	714310-22580	PISTON W/RING OS=0.5	1							2
55	2	714310-22550	RING SET O.S.=0.50	1							2
59	1	714650-23610	BEARING,PIN(U.S.=0.25	1							3
61	1	714650-23620	BEARING,PIN(U.S.=0.50	1							4
63	1	114699-21590	FLYWHEEL, DE ASSY	1							
66	2	114662-21601	GEAR, RING	1							
67	1	160842-21260	WASHER	1							
68	1	160842-21150	KEY 6.3X50	1							
69	1	160842-21250	BOLT 7/16-20UNF	1							



Fig.5. LUB.OIL PUMP & GOVERNOR

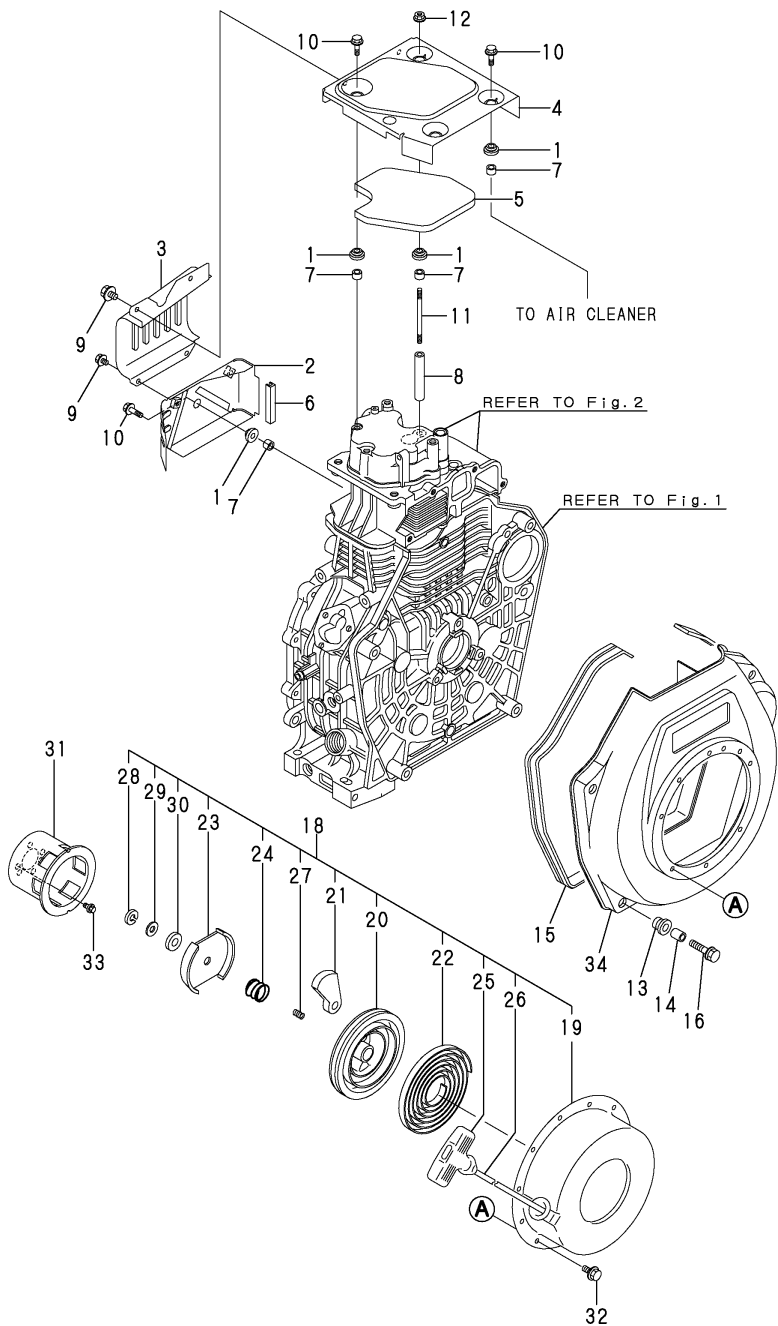


(A)=L100V6CA1T1A  
(B)=  
(C)=

(D)=  
(E)=  
(F)=

REF.	LEV.	PARTS NO.	DESCRIPTION	Q'TY						I	R
				(A)	(B)	(C)	(D)	(E)	(F)		
1	1	114650-32010	PUMP ASSY, LUB.OIL	1							
7	1	114299-32570	O-RING, COVER	1							
8	1	22312-030160	PARALLEL PIN 3X16	1							
9	1	26106-060122	BOLT M 6X 12 PLATED	3							
10	1	114299-35110	FILTER CMP, LUB.OIL	1							
12	2	24341-000224	O-RING 1A S-22.4	1							
13	1	26106-060162	BOLT M 6X 16 PLATED	1							
14	1	114310-61500	LEVER ASSY, GOVERNOR	1							
26	2	22322-030200	TAPER PIN 3X20	1							
31	2	22322-030200	TAPER PIN 3X20	1							
34	1	114770-61520	BEARING,NEEDLE	2							
35	1	114299-61600	SEAL, OIL	1							
36	1	114770-61610	WASHER, THRUST	1							
37	1	114299-61190	WASHER, GOVERNOR	1							
38	1	114771-61810	WASHER, PLAIN 14	1							
39	1	114771-61830	PLATE	1							
40	1	114295-61940	NUT	1							
41	1	114771-66600	LIMITER ASSY, FUEL	1							
42	1	114771-66690	NUT M14	1							
43	1	135210-61090	LEAD	1							
44	1	22451-060000	WIRE 0.6	1							
45	1	114299-32070	COVER, LUB. OIL PUMP	1							
46	1	114310-66010	SPRING, REGULATOR	1							
47	1	114299-66200	SPRING, RETURN	1							
48	1	714210-61700	GOVERNOR ASSY	1							
49	2	114210-61290	WEIGHT ASSY,GOVERNOR	1							
54	1	114210-66500	SPEED CTRL, THAI	1							
55	2	114210-66060	HANDLE ASY,REGULATOR	1							
58	3	26117-050089	BOLT M 5X 8 PLATED	1							
59	2	114210-66100	BRACKET, REGULATOR	1							
60	2	114299-66440	BOLT, ADJUSTING	1							
61	2	114299-67080	BOLT, ADJUSTING	1							
62	2	160725-78350	KNOB (W/M6X15)	1							
63	2	26347-060002	U-NUT M 6	1							
64	2	26757-060002	NUT M 6	2							
65	1	114299-66250	SPRING, RETURN	1							
66	1	26106-060142	BOLT M 6X 14 PLATED	1							
67	1	26106-060202	BOLT M 6X 20 PLATED	1							
68	1	114771-61890	PROTECTOR CMP	1							
70	2	114771-61960	SPACER	1							
71	2	24311-000180	O-RING 1A P-18.0	1							

Fig.6. COOLING & STARTING DEVICE



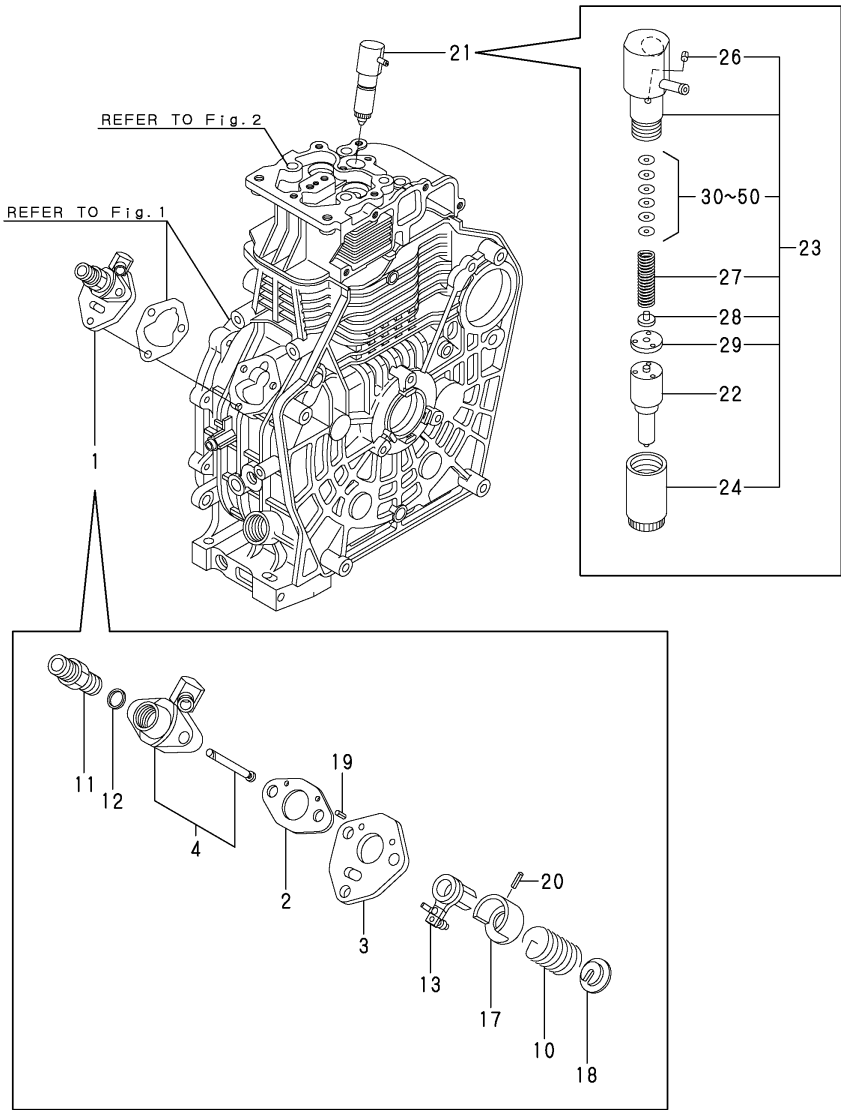
6. COOLING & STARTING DEVICE

(A)=L100V6CA1T1A  
(B)=  
(C)=

(D)=  
(E)=  
(F)=

REF.	LEV.	PARTS NO.	DESCRIPTION	Q'TY						I	R
				(A)	(B)	(C)	(D)	(E)	(F)		
1	1	114299-45220	GROMMET, TANK	5							
2	1	114310-45260	COVER B, SIDE (13)	1							
3	1	114310-45270	COVER A, SIDE (13)	1							
4	1	114310-45300	COVER, TOP (BLACK) (13)	1							
5	1	114310-45310	DAMPER	1							
6	1	114399-45320	RUBBER, SEAL	1							
7	1	114399-45340	COLLAR, CYL. COVER	5							
8	1	114310-45350	SPACER, TOP COVER	1							
9	1	26106-060082	BOLT M 6X 8 PLATED	4							
10	1	26106-060202	BOLT M 6X 20 PLATED	4							
11	1	26226-060752	STUD M 6X 75	1							
12	1	26366-060002	NUT M 6	1							
13	1	114299-45300	RUBBER, CUSHION	4							
14	1	114299-45310	COLLAR, FAN CASE	4							
15	1	114699-45330	SEAL, FAN CASE	1							
16	1	114299-45350	BOLT, FAN CASE	4							
18	1	114699-76251	RECOIL ASSY	1							
19	2	114699-76510	CASE, STARTER	1							
20	2	114699-76520	REEL, RECOIL	1							
21	2	114699-76531	RATCHET	2							
22	2	114699-76540	SPRING, SPIRAL	1							
23	2	114699-76551	GUIDE, RATCHET	1							
24	2	114699-76560	SPRING, FRICTION	1							
25	2	114699-76620	KNOB, STARTER	1							
26	2	114699-76630	ROPE, STARTER	1							
27	2	114699-76650	SPRING, RETURN	1							
28	2	114699-76660	RETAINING RING	1							
29	2	114699-76670	WASHER	1							
30	2	114699-76680	WASHER IN NYLON	1							
31	1	114699-76592	PULLEY, STARTER	1							
32	1	26106-060082	BOLT M 6X 8 PLATED	4							
33	1	26106-060122	BOLT M 6X 12 PLATED	3							
34	1	114310-45100	FAN CASE (SILVER) (17)	1							

Fig.7. FUEL INJECTION PUMP & FUEL INJECTION VALVE



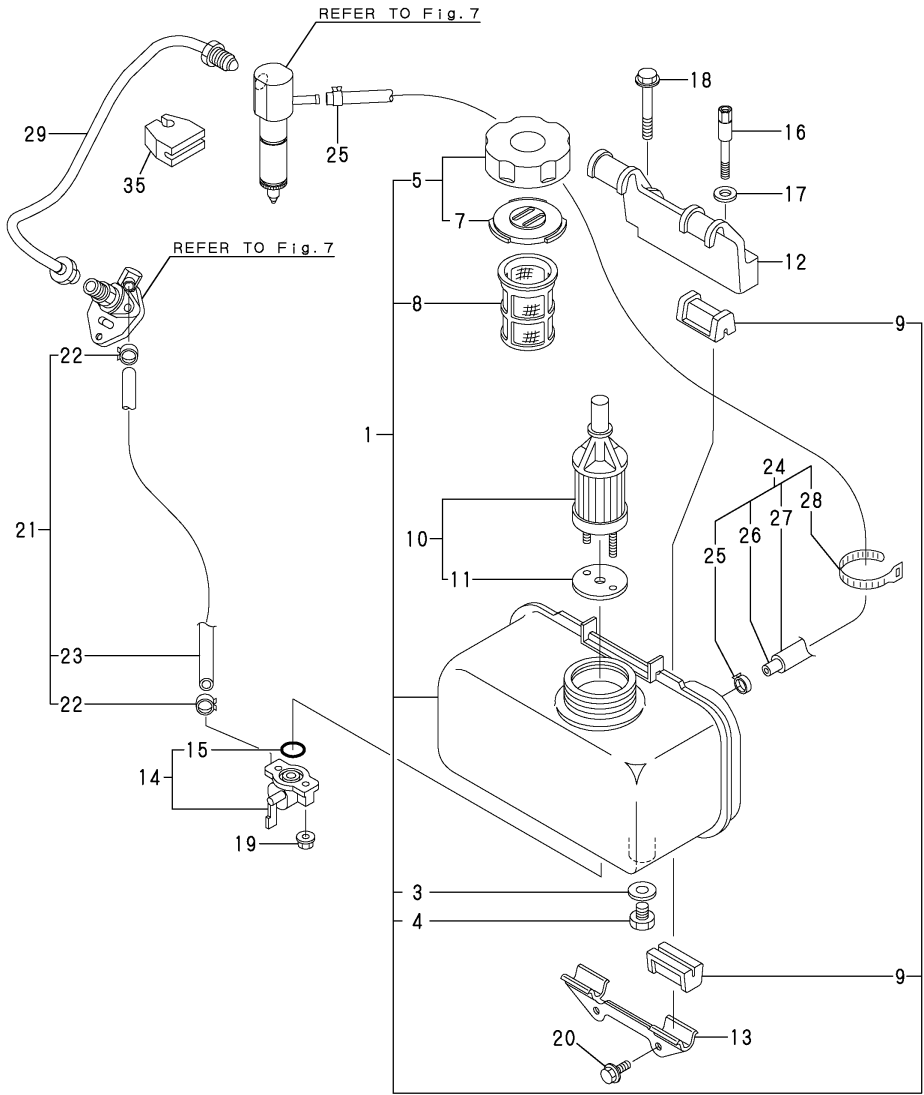
OCR10-G63100 7. FUEL INJECTION PUMP & FUEL INJECTION VALVE

(A)=L100V6CA1T1A  
(B)=  
(C)=

(D)=  
(E)=  
(F)=

REF.	LEV.	PARTS NO.	DESCRIPTION	Q'TY						I	R
				(A)	(B)	(C)	(D)	(E)	(F)		
1	1	714310-51100	PUMP ASSY, F.INJECT.	1							
2	2	105546-51020	GASKET	1							
3	2	114250-51080	PLATE	1							
4	2	114310-51200	BODY, F. I. PUMP	1							
10	2	114250-51160	SPRING	1							
11	2	114210-51300	VALVE ASSY, DELIVERY	1							
12	2	124550-51350	GASKET, DELIVERY	1							
13	2	114250-51600	LEVER ASSY, CONTROL	1							
17	2	114250-51640	SEAT (A), SPRING	1							
18	2	114250-51650	SEAT (B), SPRING	1							
19	2	22351-020006	SPRING PIN 2X 6	2							
20	2	22351-030008	SPRING PIN 3X 8	1							
21	1	714310-53100	FUEL INJECTOR	1							
22	2	114310-53000	NOZZLE ASSY	1							
23	2	114210-53100	HOLDER ASSY,NOZZLE	1							
24	3	114210-53080	NUT,NOZZLE	1							
26	3	114210-53330	PIN	1							
27	3	114210-53120	SPRING,NOZZLE	1							
28	3	114210-53130	SEAT,SPRING	1							
29	3	114210-53140	SPACER ASSY,VALVE	1							
30	3	114210-53410	SHIM(T=1.00)	1							
31	3	114210-53420	SHIM(T=1.05)	1							
32	3	114210-53430	SHIM(T=1.10)	1							
33	3	114210-53440	SHIM(T=1.15)	1							
34	3	114210-53450	SHIM(T=1.20)	1							
35	3	114210-53460	SHIM(T=1.25)	1							
36	3	114210-53470	SHIM(T=1.30)	1							
37	3	114210-53480	SHIM(T=1.35)	1							
38	3	114210-53490	SHIM(T=1.40)	1							
39	3	114210-53500	SHIM(T=1.45)	1							
40	3	114210-53510	SHIM(T=1.50)	1							
41	3	114210-53520	SHIM(T=1.55)	1							
42	3	114210-53530	SHIM(T=1.60)	1							
43	3	114210-53540	SHIM(T=1.65)	1							
44	3	114210-53550	SHIM(T=1.70)	1							
45	3	114210-53560	SHIM(T=1.75)	1							
46	3	114210-53570	SHIM(T=1.80)	1							
47	3	114210-53580	SHIM(T=1.85)	1							
48	3	114210-53590	SHIM(T=1.90)	1							
49	3	114210-53600	SHIM(T=1.95)	1							
50	3	114210-53610	SHIM(T=2.00)	1							

Fig.8. FUEL TANK & FUEL PIPE



OCR10-G63100 8. FUEL TANK & FUEL PIPE

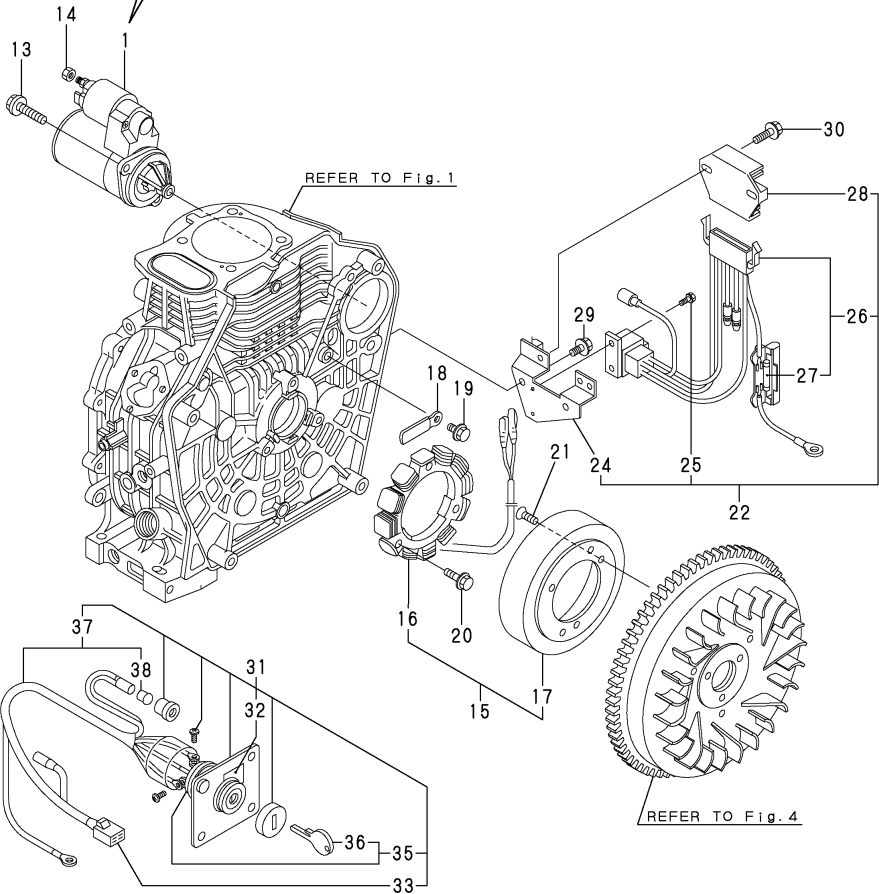
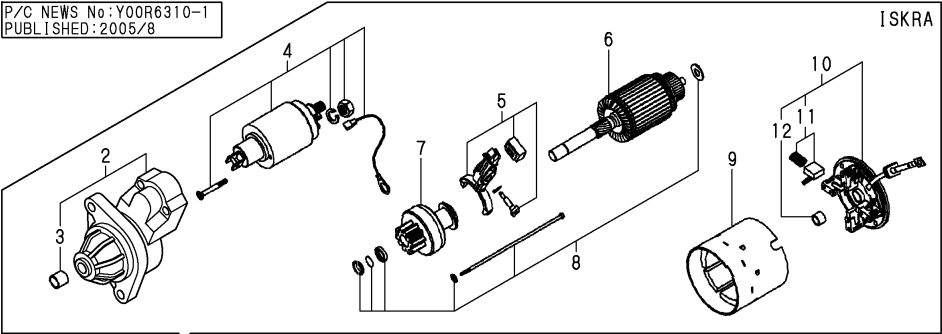
(A)=L100V6CA1T1A  
(B)=  
(C)=

(D)=  
(E)=  
(F)=

REF.	LEV.	PARTS NO.	DESCRIPTION	Q'TY						I	R
				(A)	(B)	(C)	(D)	(E)	(F)		
1	1	714310-55700	TANK,FUEL(BLACK)(13)	1							
3	3	23414-080000	GASKET 8, ROUND	1							
4	3	105300-55080	PLUG, DRAIN	1							
5	2	114288-55041	CAP ASSY, FUEL TANK	1							
7	3	114288-55081	VALVE	1							
8	2	114299-55100	FILTER, FUEL OIL	1							
9	2	114250-55201	DAMPER, FUEL TANK	4							
10	1	114250-55121	FILTER, FUEL OIL	1							
11	2	114250-55130	GASKET	1							
12	1	114310-55230	STAY B, FUEL TANK	1							
13	1	114210-55210	STAY A, FUEL TANK	1							
14	1	114250-55301	COCK	1							
15	2	24341-000150	O-RING 1A S-15.0	1							
16	1	114210-55810	BOLT, LIFTING	1							
17	1	22117-080000	WASHER 8	1							
18	1	26106-080452	BOLT M 8X 45 PLATED	1							
19	1	26366-060002	NUT M 6	2							
20	1	26106-060162	BOLT M 6X 16 PLATED	2							
21	1	114770-59030	PIPE ASSY, FUEL OIL	1							
22	2	114270-59010	CLIP,HOSE	2							
23	2	114268-59061	PIPE, FUEL OIL	1							
24	1	114310-59300	PIPE ASSY, RETURN	1							
25	2	124722-59050	CLAMP 9	2							
26	2	114310-59060	PIPE, FUEL RETURN	1							
27	2	114310-59310	TUBE, PROTECTOR	1							
28	2	121750-59890	CLAMP 140	1							
29	1	114310-59800	PIPE, FUEL INJECTION	1							
35	1	114650-59850	BRACKET, PIPE	1							

Fig.9. STARTING MOTOR & DYNAMO(PREVIOUS)

P/C NEWS No:Y00R6310-1  
PUBLISHED:2005/8



Remarks  
(1)4 PIECE SET

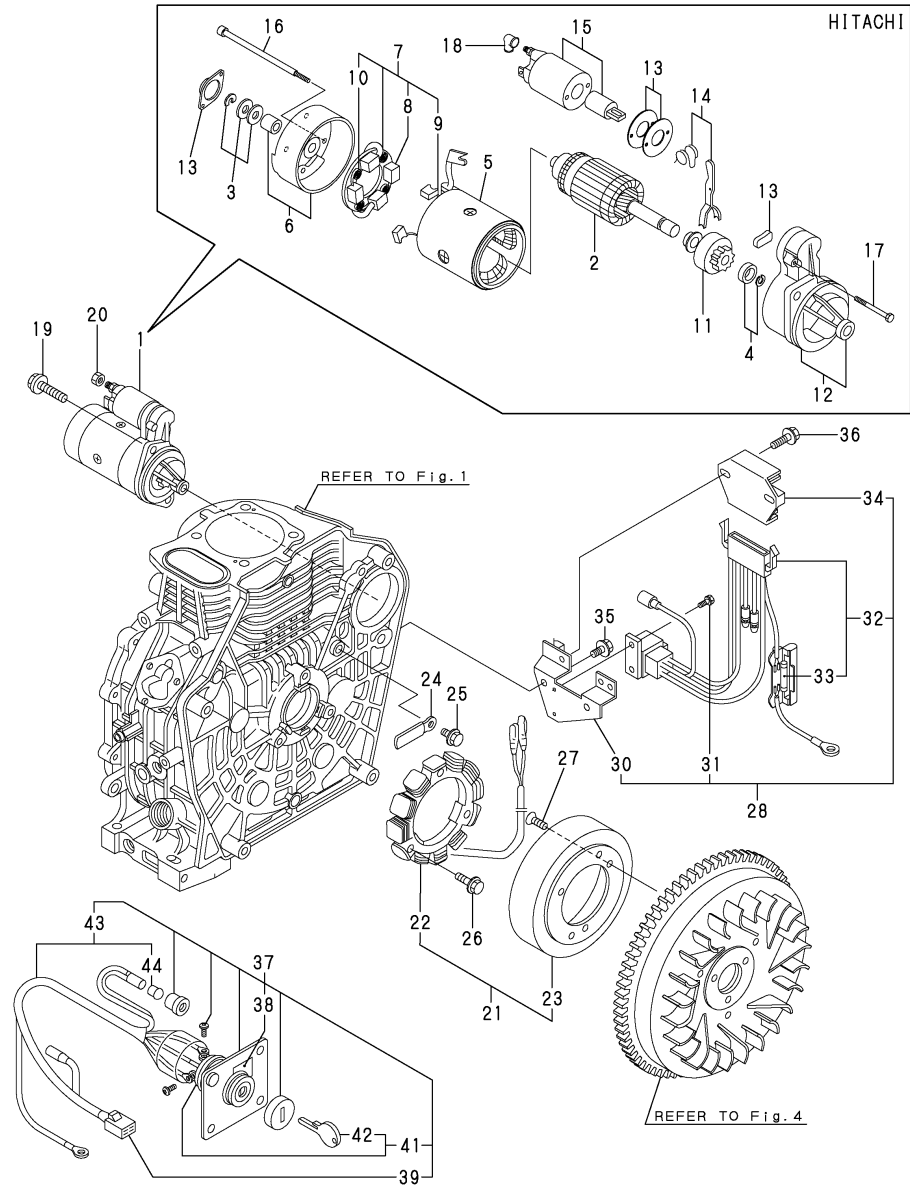
(A)=L100V6CA1T1A  
(B)=  
(C)=

(D)=  
(E)=  
(F)=

REF.	LEV.	PARTS NO.	DESCRIPTION	Q'TY						I	R
				(A)	(B)	(C)	(D)	(E)	(F)		
1	1	114399-77010	STARTER(ISKRA 12V	1							
2	2	114399-77150	GEAR CASE ASSY	1							
I 3	3	114399-77030	BUSH	1							
4	2	114399-77060	MAGNETIC SWITCH ASSY	1							
5	2	114399-77180	SHIFT LEVER KIT	1							
6	2	114399-77110	ARMATURE ASSY	1							
7	2	114399-77040	PINION CLUTCH ASSY	1							
8	2	114399-77770	THROUGH BOLT ASSY	1							
9	2	114399-77130	YOKE ASSY	1							
10	2	114399-77140	REAR COVER ASSY	1							
11	3	114399-77160	BRUSH HOLDER ASSY	1							1
I 12	3	114399-77050	BUSH	1							
13	1	26106-100302	BOLT M10X 30 PLATED	2							
14	1	26716-080002	NUT M 8	1							
15	1	114399-78260	DYNAMO ASSY	1							
16	2	114399-78730	STATOR ASSY	1							
17	2	114399-78740	WHEEL, DYNAMO	1							
18	1	160710-78710	CLAMP, CORD	1							
19	1	26106-060122	BOLT M 6X 12 PLATED	1							
20	1	26106-060202	BOLT M 6X 20 PLATED	3							
21	1	26577-060142	SCREW M 6X 14	3							
22	1	114399-77550	REG. & HARNESS ASSY	1							
24	3	114399-77400	BRACKET, HARNESS	1							
25	3	26023-040102	SCREW M 4X 10	2							
26	3	114399-77540	HARNESS, WIRE	1							
27	4	29411-200000	FUSE (20A),CARTRIDGE	2							
28	2	114399-77710	REGULATOR	1							
29	1	26106-060122	BOLT M 6X 12 PLATED	2							
30	1	26106-060202	BOLT M 6X 20 PLATED	2							
31	1	114351-77500	PANEL ASSY,KEYSWITCH	1							
32	2	105198-07120	LABEL, STARTER	1							
33	2	114351-77520	JOINT	1							
35	2	106100-77620	SWITCH, KEY	1							
36	3	106100-77630	KEY, STARTER	1							
37	2	114351-77700	HARNESS, WIRE	1							
38	3	29220-083200	BULB (12V/3.4W)	1							

Fig.11. (9A)STARTING MOTOR & DYNAMO(NEW)

P/C NEWS No:Y00R6310-1  
PUBLISHED:2005/8



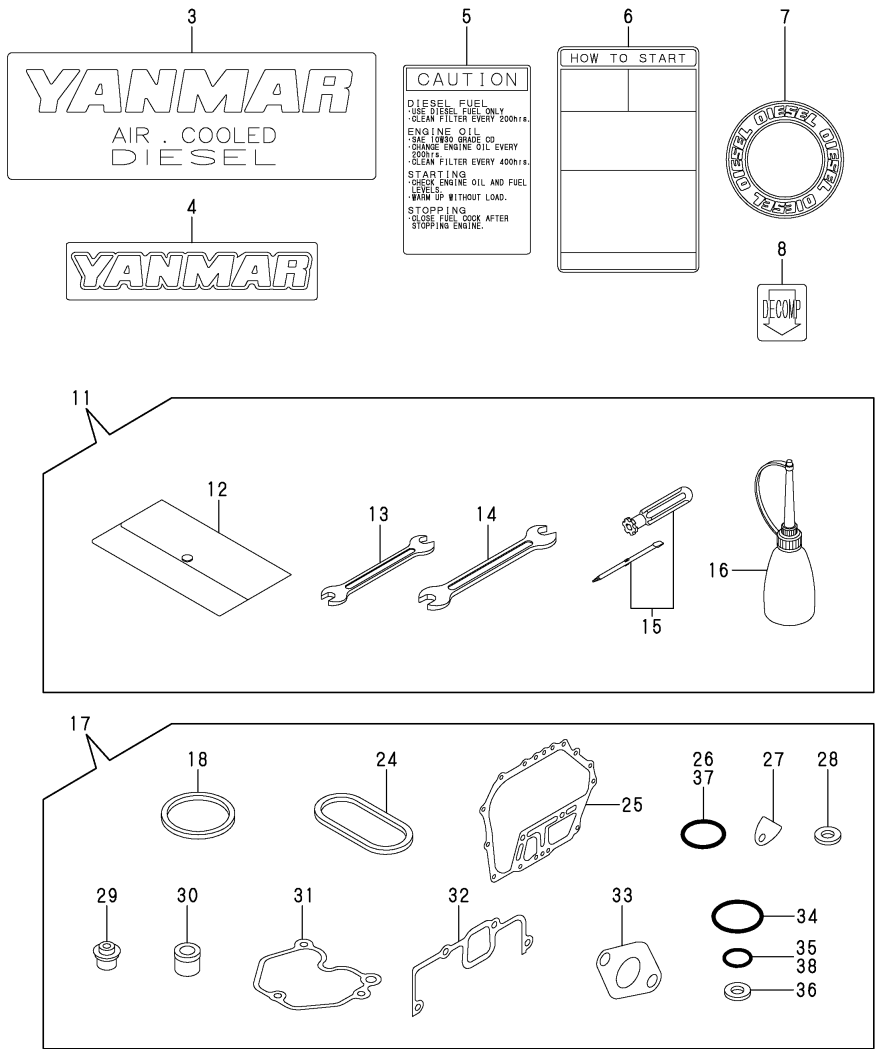
Remarks  
(1)MAKER CHANGED.  
FROM ENGINE NO.M00178

(A)=L100V6CA1T1A  
(B)=  
(C)=

(D)=  
(E)=  
(F)=

REF.	LEV.	PARTS NO.	DESCRIPTION	Q'TY						I	R
				(A)	(B)	(C)	(D)	(E)	(F)		
1	1	114362-77011	STARTER(HITACHI 12V	1							1
2	2	114381-77110	ARMATURE	1							
3	2	X2114811000	WASHER KIT, THRUST	1							
4	2	X2114715500	STOPPER SET, PINION	1							
5	2	114381-77130	COIL ASSY, FIELD	1							
6	2	114381-77140	COVER, REAR	1							
7	2	114371-77160	HOLDER ASSY, BRUSH	1							
8	3	114371-79040	BRUSH (-)	2							
9	3	114371-79050	BRUSH (+)	1							
10	3	114371-79060	SPRING, BRUSH	4							
11	2	X211485016	PINION ASSY	1							
12	2	114381-77151	HOUSING ASSY, GEAR	1							
13	2	114371-77170	COVER KIT, DUST	1							
14	2	114371-77180	SHIFT LEVER KIT	1							
15	2	124298-77020	SWITCH, MAGNET	1							
16	2	124195-77770	THROUGH BOLT	2							
17	2	114371-79070	BOLT M 6X 37	2							
18	2	X2114274200	COVER, TERMINAL	1							
19	1	26106-100302	BOLT M10X 30 PLATED	2							
20	1	26716-080002	NUT M 8	1							
21	1	114399-78260	DYNAMO ASSY	1							
22	2	114399-78730	STATOR ASSY	1							
23	2	114399-78740	WHEEL, DYNAMO	1							
24	1	160710-78710	CLAMP, CORD	1							
25	1	26106-060122	BOLT M 6X 12 PLATED	1							
26	1	26106-060202	BOLT M 6X 20 PLATED	3							
27	1	26577-060142	SCREW M 6X 14	3							
28	1	114399-77550	REG. & HARNESS ASSY	1							
30	3	114399-77400	BRACKET, HARNESS	1							
31	3	26023-040102	SCREW M 4X 10	2							
32	3	114399-77540	HARNESS, WIRE	1							
33	4	29411-200000	FUSE (20A),CARTRIDGE	2							
34	2	114399-77710	REGULATOR	1							
35	1	26106-060122	BOLT M 6X 12 PLATED	2							
36	1	26106-060202	BOLT M 6X 20 PLATED	2							
37	1	114351-77500	PANEL ASSY,KEYSWITCH	1							
38	2	105198-07120	LABEL, STARTER	1							
39	2	114351-77520	JOINT	1							
41	2	106100-77620	SWITCH, KEY	1							
42	3	106100-77630	KEY, STARTER	1							
43	2	114351-77700	HARNESS, WIRE	1							
44	3	29220-083200	BULB (12V/3.4W)	1							

Fig.10. TOOL,LABEL & GASKET SET



Remarks  
(1)OPTIONAL

REF.	LEV.	PARTS NO.	DESCRIPTION	Q'TY						I	R
				(A)	(B)	(C)	(D)	(E)	(F)		
3	1	114299-07100	LABEL, AIR COOLED	1							
4	1	114299-07110	LABEL, YANMAR	1							
5	1	114210-07120	LABEL, CAUTION	1							
6	1	114210-07130	LABEL HOW TO START-E	1							
7	1	114299-07160	LABEL, DIESEL	1							
8	1	114210-07200	LABEL, DECOMPRESSION	1							
11	1	114299-92590	TOOL ASSY	1							
12	2	114299-92600	TOOL BAG	1							
13	2	114299-92710	SPANA	1							
14	2	114299-92720	SPANA	1							
15	2	114299-92730	DRIVER	1							
16	2	114299-92740	FITTING, FUEL	1							
17	1	714310-92600	GASKET SET(NON-ASB.)	1							1
18	2	114695-01330	GASKET ASSY,CYL.HEAD	1							
24	2	114699-01380	O-RING	1							
25	2	114699-01410	GASKET, CRANK CASE	1							
26	2	114299-01950	O-RING	2							
27	2	114250-01841	GASKET	1							
28	2	22190-160002	SEAL WASHER 16S	2							
29	2	114650-11340	SEAL, VALVE STEM	2							
30	2	114771-11461	GASKET, NOZZLE	1							
31	2	114310-11310	GASKET, BONNET	1							
32	2	114310-12210	GASKET, AIR CLEANER	1							
33	2	114310-13200	GASKET, MUFFLER	1							
34	2	114299-32570	O-RING, COVER	1							
35	2	24341-000100	O-RING 1A S-10.0	1							
36	2	23414-080000	GASKET 8, ROUND	1							
37	2	24341-000224	O-RING 1A S-22.4	1							
38	2	24341-000150	O-RING 1A S-15.0	1							

## Part Number Index

All parts are stipulated in the order of part numbers.

(Depending on the area in which the part is used.)

This index will display the location of the part according to each part number.



## PARTS No. INDEX

PARTS No.	Fig.	Ref.No.
104211-11370	2	26
105198-07120	9	32
	11	38
105300-55080	8	4
105546-51020	7	2
106100-77620	9	35
	11	41
106100-77630	9	36
	11	42
114210-03590	2	38
114210-07120	10	5
114210-07130	10	6
114210-07200	10	8
114210-11900	2	13
114210-12520	3	3
114210-12560	3	4
114210-12580	3	6
114210-12590	3	7
114210-12600	3	10
114210-14300	4	7
114210-51300	7	11
114210-53080	7	24
114210-53100	7	23
114210-53120	7	27
114210-53130	7	28
114210-53140	7	29
114210-53330	7	26
114210-53410	7	30
114210-53420	7	31
114210-53430	7	32
114210-53440	7	33
114210-53450	7	34
114210-53460	7	35
114210-53470	7	36
114210-53480	7	37
114210-53490	7	38
114210-53500	7	39
114210-53510	7	40
114210-53520	7	41
114210-53530	7	42
114210-53540	7	43
114210-53550	7	44
114210-53560	7	45
114210-53570	7	46
114210-53580	7	47
114210-53590	7	48
114210-53600	7	49
114210-53610	7	50
114210-55210	8	13
114210-55810	8	16

PARTS No.	Fig.	Ref.No.
114210-61290	5	49
114210-66060	5	55
114210-66100	5	59
114210-66500	5	54
114250-01841	1	7
	10	27
114250-51080	7	3
114250-51160	7	10
114250-51600	7	13
114250-51640	7	17
114250-51650	7	18
114250-55121	8	10
114250-55130	8	11
114250-55201	8	9
114250-55301	8	14
114268-59061	8	23
114270-59010	8	22
114288-55041	8	5
114288-55081	8	7
114295-11470	2	28
114295-61940	5	40
114299-01600	1	8
114299-01690	1	14
114299-01800	1	33
114299-01830	1	5
114299-01950	1	17
	10	26
114299-02030	1	19
114299-03640	2	41
114299-07100	10	3
114299-07110	10	4
114299-07160	10	7
114299-11240	2	19
		23
114299-12300	3	11
114299-32070	5	45
114299-32570	5	7
	10	34
114299-35110	5	10
114299-35150	1	12
114299-45220	6	1
114299-45300	6	13
114299-45310	6	14
114299-45350	6	16
114299-55100	8	8
114299-61190	5	37
114299-61600	5	35
114299-66200	5	47
114299-66250	5	65
114299-66440	5	60

PARTS No.	Fig.	Ref.No.
114299-67080	5	61
114299-92590	10	11
114299-92600	10	12
114299-92710	10	13
114299-92720	10	14
114299-92730	10	15
114299-92740	10	16
114310-01010	1	1
114310-01200	2	1
114310-01210	2	2
114310-01450	1	45
114310-11020	2	3
114310-11100	2	7
114310-11110	2	8
114310-11120	2	9
114310-11180	2	10
114310-11250	2	14
114310-11260	2	15
114310-11280	2	16
114310-11310	2	34
	10	31
114310-11650	2	17
114310-11660	2	21
114310-11930	2	11
114310-11950	2	36
114310-12020	3	2
114310-12210	3	24
	10	32
114310-12510	3	1
114310-13200	3	14
	10	33
114310-14200	4	6
114310-14400	4	12
114310-45100	6	34
114310-45260	6	2
114310-45270	6	3
114310-45300	6	4
114310-45310	6	5
114310-45350	6	8
114310-51200	7	4
114310-53000	7	22
114310-55230	8	12
114310-59060	8	26
114310-59300	8	24
114310-59310	8	27
114310-59800	8	29
114310-61500	5	14
114310-66010	5	46
114351-77500	9	31
	11	37

PARTS No.	Fig.	Ref.No.
114351-77520	9	33
	11	39
114351-77700	9	37
	11	43
114362-77011	11	1
114371-77160	11	7
114371-77170	11	13
114371-77180	11	14
114371-79040	11	8
114371-79050	11	9
114371-79060	11	10
114371-79070	11	17
114381-77110	11	2
114381-77130	11	5
114381-77140	11	6
114381-77151	11	12
114399-45320	6	6
114399-45340	6	7
114399-77010	9	1
114399-77030	9	3
114399-77040	9	7
114399-77050	9	12
114399-77060	9	4
114399-77110	9	6
114399-77130	9	9
114399-77140	9	10
114399-77150	9	2
114399-77160	9	11
114399-77180	9	5
114399-77400	9	24
	11	30
114399-77540	9	26
	11	32
114399-77550	9	22
	11	28
114399-77710	9	28
	11	34
114399-77770	9	8
114399-78260	9	15
	11	21
114399-78730	9	16
	11	22
114399-78740	9	17
	11	23
114650-02100	1	48
114650-02150	1	20
114650-02200	1	25
114650-02210	1	26
114650-11340	2	25
	10	29

MODEL : L100V6CA1T1AA  
PC NO : 0CR10-G63100

## PARTS No. INDEX

PARTS No.	Fig.	Ref.No.
114650-32010	5	1
114650-59850	8	35
114662-21601	4	66
114695-01330	1	27
	10	18
114699-01380	1	6
	10	24
114699-01410	1	44
	10	25
114699-01760	1	15
114699-11600	2	29
114699-13551	3	15
114699-13561	3	17
114699-13700	3	18
114699-13710	3	19
114699-13720	3	16
114699-13800	3	23
114699-21220	4	21
114699-21550	4	22
114699-21590	4	63
114699-22300	4	32
114699-45330	6	15
114699-76251	6	18
114699-76510	6	19
114699-76520	6	20
114699-76531	6	21
114699-76540	6	22
114699-76551	6	23
114699-76560	6	24
114699-76592	6	31
114699-76620	6	25
114699-76630	6	26
114699-76650	6	27
114699-76660	6	28
114699-76670	6	29
114699-76680	6	30
114770-59030	8	21
114770-61520	5	34
114770-61610	5	36
114771-11461	2	27
	10	30
114771-61810	5	38
114771-61830	5	39
114771-61890	5	68
114771-61960	5	70
114771-66600	5	41
114771-66690	5	42
119810-23200	4	38
121750-59890	8	28
124060-23100	4	37

PARTS No.	Fig.	Ref.No.
124195-77770	11	16
124298-77020	11	15
124550-51350	7	12
124722-59050	8	25
129792-22400	4	33
135210-61090	5	43
160710-78710	9	18
	11	24
160725-78350	5	62
160842-21150	4	68
160842-21250	4	69
160842-21260	4	67
714210-61700	5	48
714310-14580	4	1
714310-21700	4	13
714310-22500	4	26
714310-22540	4	49
714310-22550	4	55
714310-22580	4	53
714310-22620	4	47
714310-22720	4	24
714310-23700	4	34
714310-28510	4	41
714310-51100	7	1
714310-53100	7	21
714310-55700	8	1
714310-92600	10	17
714650-23600	4	39
714650-23610	4	59
714650-23620	4	61
X2114274200	11	18
X2114715500	11	4
X2114811000	11	3
X211485016	11	11

PARTS No.	Fig.	Ref.No.
-----------	------	---------

PARTS No.	Fig.	Ref.No.
-----------	------	---------



***YANMAR CO., LTD.***